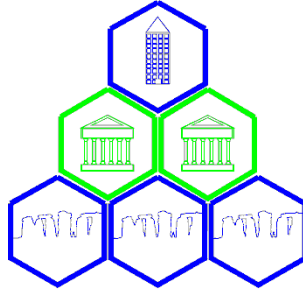


# The Historic Environment Consultancy



Appendix 1 Level 3  
Building Recording of  
**Administration Building**

Blue Bird Park  
Bromsgrove Road  
Hunnington  
Worcestershire  
B62 0JW

National Grid Reference: SO 96679 81424

Planning Reference Number: 19/00592/FUL  
OASIS ID: thearcha1-516388  
HER Event No. WSM80084  
Listing Reference Number: 1464601

Document Reference Number 2023/1681  
Version 3  
14<sup>th</sup> September 2023

Dr Peter Wardle & Colin Lacey

**Appendix 1 Building Recording: Administration Building**  
**Dr Peter Wardle & Colin Lacey**

**Table of Contents**

1. Summary .....	1
2. Introduction .....	2
2.1 The Building.....	2
2.2 The Client .....	2
2.3 Copyright .....	2
2.4 Location .....	2
2.5 Date of Recording.....	2
2.6 Circumstances of The Project.....	2
2.7 Location of The Archive .....	3
2.8 Methodology .....	3
2.9 Reference Numbers.....	3
3. Historic Background.....	6
3.1 Documentary Evidence.....	6
3.2 Historic Photographs .....	6
3.3 Under Construction.....	7
3.4 Aerial Views .....	8
3.5 General Views. ....	11
4. The Building.....	14
4.1 The Building.....	14
4.2 The Importance of the Building – Listing Criteria .....	14
4.3 The Importance of the Building using Understanding Heritage – Values Conservation Principles Policies and Guidance 2008.....	14
4.4 Designation.....	15
4.5 The Layout of The Building.....	18
4.6 The Date of the Building .....	20
4.7 The Construction Sequence .....	20
4.8 The Plan Form of The Building As Originally Built .....	23
5. Description: Exterior .....	25
6. Description: Ground Floor.....	37
6.1 Ground Floor Room 1 Entrance Hall.....	37
6.2 Ground Floor Room 2 Corridor .....	40
6.3 Ground Floor Room 4 Ladies Toilet.....	44
6.4 Ground Floor Room 5 Gents Toilet.....	46
6.5 Ground Floor Room 6 Storage.....	48
6.6 Ground Floor Room 7 ?Seminar room.....	50
6.7 Ground Floor Room 8 General Office .....	52

6.8	Ground Floor Room 9 Staff Room .....	55
6.9	Ground Floor Room 10 Disabled Toilet .....	58
6.10	Ground Floor Room 11 Server Room.....	60
6.11	Ground Floor Room 12 Office .....	62
6.12	Ground Floor Room 13 Office .....	65
6.13	Ground Floor Room 14 ?Office .....	67
6.14	Ground Floor Room 15 Distribution .....	70
7.	Description: First Floor.....	72
7.1	First Floor Room 1 Stairs and Landing .....	72
7.2	First Floor Room 3 Corridor .....	77
7.3	First Floor Room 4a Toilets.....	80
7.4	First Floor Room 5 Office.....	82
7.5	First Floor Room 6 Strong Room .....	84
7.6	First Floor Room 7 Accounts .....	86
7.7	First Floor Room 9 Anteroom.....	91
7.8	First Floor Room 10 Anteroom.....	93
7.9	First Floor Room 11 Gents Toilet.....	94
7.10	First Floor Room 12 Stairs and Landing.....	96
7.11	First Floor Room 13 ?Staff room .....	98
7.12	First Floor Room 14 Ladies Toilet .....	101
7.13	First Floor Room 15.....	103
7.14	First Floor Room 16 Office .....	106
7.15	First Floor Room 17 Office .....	108
7.16	First Floor Room 18 Office .....	110
8.	Basement / Plant Room.....	114
9.	Door Catalogue.....	116
10.	Original Features .....	123
10.1	Wall Finish.....	123
10.2	Staircase .....	124
10.3	Lighting.....	125
10.4	Fireplaces.....	128
10.5	Other .....	130
11.	Vector Plans and Elevations .....	131

## Table of Figures

Figure 1: General Location Plan, 1:10,000 @ A4 .....	4
Figure 2: Detailed Location Plan. Scale 1:2500 .....	5
Figure 3 The Ground Floor, 1:200 @ A3 .....	19
Figure 4: The First Floor, 1:200 @ A3 .....	19
Figure 5: Phase Plan Ground Floor Scale 1:200 @ A3 .....	21
Figure 6: Phase Plan First Floor Scale 1:200 @ A3 .....	21
Figure 7: Phased southeast elevation, 1:200 @ A3.....	22
Figure 8: Phased northwest elevation, 1:200 @ A3.....	22
Figure 9: Phased southwest and northeast elevations, 1:200 @ A3.....	22
Figure 10: Ground floor as built, 1:200 @ A3.....	23
Figure 11: First floor as built, 1:200 @ A3 .....	23
Figure 12: Original Functions, 1:200 @ A3.....	24
Figure 13: The entrance after completion (Romsley & Hunnington His Soc).....	26
Figure 14 Vector Floor Plan .....	131
Figure 15 Vector Elevations.....	132

## Table of Plates

Plate 1: c. 1930 photograph showing southeast aspect (Blue Bird Album, Romsley & Hunnington History Society) .....	6
Plate 2: The entrance under construction, 1927 (Blue Bird Album, Romsley & Hunnington History Society).....	7
Plate 3: The northeast part of the building under construction, 1927 (Blue Bird Album, Romsley & Hunnington History Society) .....	7
Plate 4: The southeast face of the building under construction, 1927 (Romsley & Hunnington History Society) .....	8
Plate 5: Aerial view, 1936 (Britain from Above).....	8
Plate 6: The administration building in 1958 .....	11
Plate 7: View from southwest gate, c. 1990s ( <a href="http://www.bennett-family.me.uk">http://www.bennett-family.me.uk</a> ) .....	11
Plate 8: View from central gate, c. 1990s ( <a href="http://www.bennett-family.me.uk">http://www.bennett-family.me.uk</a> ) .....	12
Plate 9: 1930s photograph showing south aspect (Blue Bird Album, Romsley & Hunnington History Society) .....	12
Plate 10: 1930s photograph showing southeast aspect (Blue Bird Album, Romsley & Hunnington History Society) .....	13
Plate 11: The main entrance.....	17
Plate 12: The southwest elevation .....	18
Plate 13: Southwest part, southeast elevation .....	25
Plate 14: Detail of windows.....	25
Plate 15: Central part, southeast elevation .....	26
Plate 16: Northeast part, southeast elevation .....	27
Plate 17: Detail of central entrance, southeast elevation .....	27
Plate 18: Inscription over entrance .....	28
Plate 19: Foundation stone.....	28
Plate 20: Elevated view, façade, southwest wing .....	29
Plate 21: Elevated view, façade, centre.....	29
Plate 22: Elevated view, façade, northeast wing.....	30
Plate 23: Southwest elevation.....	30
Plate 24: Detail of light fitting above southwest door .....	31
Plate 25: Northeast Elevation .....	31
Plate 26: Northeast door.....	32
Plate 27: Staircase to basement / plant room .....	32

Plate 28: Staircase to basement / plant room .....	33
Plate 29: Exterior of plant room / basement.....	33
Plate 30: Door and windows to administration building in southeast wall of manufactory room 3.....	34
Plate 31: Door and windows to administration building in southeast wall of manufactory room 5.....	35
Plate 32: Aerial image of the administration building (commissioned for this exercise, September 2022) .....	36
Plate 33: The roof of the administration building (Google Earth, 2012) .....	36
Plate 34: Ground Floor Room 1 Looking Northeast .....	37
Plate 35: Ground Floor Room 1 Looking Southwest.....	38
Plate 36: 1930s view of staircase (Blue Bird Album, Romsley & Hunnington His Soc).....	38
Plate 37: Ground Floor Room 1 Looking Northwest .....	39
Plate 38: Ground Floor Room 2 Looking Northeast .....	40
Plate 39: Ground Floor Room 2 Looking Southwest.....	41
Plate 40: Staircase at northeast end of corridor.....	41
Plate 41: Partition at southwest end of corridor .....	42
Plate 42: Ground Floor Room 3 Looking Southeast .....	43
Plate 43: Ground Floor Room 3 Detail of Door .....	43
Plate 44: Ground Floor Room 3 Looking Northwest .....	43
Plate 45: Ground Floor Room 4 Looking Southeast .....	44
Plate 46: Ground Floor Room 4 Looking Northwest .....	45
Plate 47: Detail of window.....	45
Plate 48: Ground Floor Room 5 Looking Southeast .....	46
Plate 49: Ground Floor Room 5 Looking Northwest .....	47
Plate 50: Ground Floor Room 6 Looking Southeast .....	48
Plate 51: Ground Floor Room 6 Looking Northwest .....	49
Plate 52: Ground Floor Room 7 Looking Northeast .....	50
Plate 53: Ground Floor Room 7 Looking Southwest.....	51
Plate 54: Ground Floor Room 7 Looking Northwest .....	51
Plate 55: Ground Floor Room 8 Looking Northeast .....	52
Plate 56: Ground Floor Room 8 Looking Southeast .....	53
Plate 57: Ground Floor Room 8 Looking Southeast, 1928 (Blue Bird Album, Romsley & Hunnington His Soc).....	53
Plate 58: Ground Floor Room 8 Looking Southwest.....	54
Plate 59: Ground Floor Room 8 Looking Northwest .....	54
Plate 60: Ground Floor Room 9 Looking Northeast.....	55
Plate 61: Ground Floor Room 9 Looking Southeast .....	56
Plate 62: Ground Floor Room 9 Looking Southwest.....	56
Plate 63: Ground Floor Room 9 Looking Northwest .....	57
Plate 64: View into Ground Floor Room 10.....	58
Plate 65: Ground Floor Room 10 looking Southeast.....	59
Plate 66: Ground Floor Room 10 looking Southwest .....	59
Plate 67: Ground Floor Room 11 Looking Northeast.....	60
Plate 68: Ground Floor Room 11 Looking Southeast .....	61
Plate 69: Ground Floor Room 11 Looking Southwest.....	61
Plate 70: Ground Floor Room 11 Looking Northwest .....	61
Plate 71: Ground Floor Room 12 Looking Northeast .....	62
Plate 72: Ground Floor Room 12 Looking Southeast .....	63
Plate 73: Ground Floor Room 12 Looking Southwest.....	63
Plate 74: Ground Floor Room 12 Looking Northwest .....	64
Plate 75: Ground Floor Room 13 Looking Northeast .....	65
Plate 76: Ground Floor Room 13 Looking Southeast .....	66
Plate 77: Ground Floor Room 13 Looking Northwest .....	66

Plate 78: Ground Floor Room 14 Looking Northeast .....	67
Plate 79: Ground Floor Room 14 Looking Southeast .....	68
Plate 80: Ground Floor Room 14 Looking Southwest .....	68
Plate 81: Ground Floor Room 14 Looking Northwest .....	69
Plate 82: Ground Floor Room 15 Looking Northeast .....	70
Plate 83: Ground Floor Room 15 Looking Southeast .....	71
Plate 84: Ground Floor Room 15 Looking Southwest .....	71
Plate 85: Ground Floor Room 15 Looking Northwest .....	71
Plate 86: First Floor Room 1 Looking Northeast .....	72
Plate 87: First Floor Room 1 Looking Southeast .....	73
Plate 88: First Floor Room 1 Looking Southwest .....	73
Plate 89: First Floor Room 1 Looking Northwest .....	73
Plate 90: Detail of lantern and hanging lights.....	74
Plate 91: Detail of marble plinth on staircase.....	75
Plate 92: First Floor Room 2 Looking Southwest.....	76
Plate 93: First Floor Room 3 Looking Northeast.....	77
Plate 94: First Floor Room 3 Looking Southwest.....	77
Plate 95: First Floor Room 3 Southwest Door.....	78
Plate 96: Southwest staircase.....	78
Plate 97: First Floor Room 4 Looking Northeast.....	79
Plate 98: First Floor Room 4 Looking Southwest.....	79
Plate 99: First Floor Room 4a Looking Northeast.....	80
Plate 100: First Floor Room 4a Looking Northeast.....	81
Plate 101: First Floor Room 4a Looking Southeast .....	81
Plate 102: First Floor Room 5 Looking North.....	82
Plate 103: First Floor Room 5 Looking Southeast .....	82
Plate 104: First Floor Room 5 Looking Southwest.....	83
Plate 105: First Floor Room 5 Looking Northwest .....	83
Plate 106: First Floor Room 6 Looking Northeast.....	84
Plate 107: First Floor Room 6 Looking Southeast .....	85
Plate 108: First Floor Room 6 Looking Southwest.....	85
Plate 109: First Floor Room 6 Looking Northwest .....	85
Plate 110: First Floor Room 7 Looking Northeast.....	86
Plate 111: First Floor Room 7 Looking Southeast .....	87
Plate 112: First Floor Room 7 Looking Southwest.....	87
Plate 113: First Floor Room 7 Looking Northwest .....	87
Plate 114: Door to room 7.....	88
Plate 115: First Floor Room 8 Looking Northeast.....	89
Plate 116: First Floor Room 8 Looking Southeast .....	89
Plate 117: First Floor Room 8 Looking Southwest.....	90
Plate 118: First Floor Room 8 Looking Northwest .....	90
Plate 119: First Floor Room 9 Looking Southeast .....	91
Plate 120: First Floor Room 9 Looking Southwest.....	92
Plate 121: First Floor Room 10 Looking Southeast .....	93
Plate 122: First Floor Room 10 Looking Northwest .....	93
Plate 123: First Floor Room 11 Looking Southeast .....	94
Plate 124: First Floor Room 11 Looking Southwest.....	95
Plate 125: First Floor Room 11 Looking Northwest .....	95
Plate 126: First Floor Room 12 Looking Northeast.....	96
Plate 127: First Floor Room 12 Looking Southwest.....	97
Plate 128: Detail of staircase .....	97
Plate 129: First Floor Room 13 Looking Northeast.....	98
Plate 130: First Floor Room 13 Looking Southeast .....	99
Plate 131: First Floor Room 13 Looking Southwest.....	99

Plate 132: First Floor Room 13 Looking Northwest .....	99
Plate 133: Detail of lantern.....	100
Plate 134: First Floor Room 14 Looking Southeast .....	101
Plate 135: First Floor Room 14 Looking Northwest .....	102
Plate 136: First Floor Room 15 Looking Northeast.....	103
Plate 137: First Floor Room 15 Looking Southeast .....	104
Plate 138: First Floor Room 15 Looking Southwest.....	104
Plate 139: First Floor Room 15 Looking Northwest .....	104
Plate 140: Detail of fireplace.....	105
Plate 141: First Floor Room 16 Looking Northeast.....	106
Plate 142: First Floor Room 16 Looking Southeast .....	107
Plate 143: First Floor Room 16 Looking Southwest.....	107
Plate 144: First Floor Room 16 Looking Northwest .....	107
Plate 145: First Floor Room 17 Looking Northeast.....	108
Plate 146: First Floor Room 17 Looking Southwest.....	109
Plate 147: First Floor Room 18 Looking Northeast.....	110
Plate 148: First Floor Room 18 Looking Southeast .....	111
Plate 149: First Floor Room 18 Looking Southwest.....	111
Plate 150: First Floor Room 18 Looking Northwest .....	111
Plate 151: 1930s view of Harry Vincent in the northeast part of room 18 (Blue Bird Album, Romsley & Hunnington His Soc).....	112
Plate 152: Detail of fireplace.....	113
Plate 153: Detail of wall light.....	113
Plate 154: Detail of ceiling light.....	113
Plate 155: Plant Room Looking Northeast.....	114
Plate 156: Plant Room Looking Southeast .....	114
Plate 157: Plant Room Looking Southwest.....	115
Plate 158: Plant Room Looking Northwest .....	115

### Version Control

Version No	Draft	Content Added/Omitted	Date
0.5	Client Draft		28/4/23
0.7	LPA Draft	Client Comments	
1	Issued Report	LPA Comments, OASIS Ref	9/6/23
2	Issued Report	LPA Comments, HER Ref	3/8/23
3	Issued Report	Historic Photographs, bibliography	14/9/23

Heritage Statement: Administration Building  
Dr Peter Wardle & Colin Lacey 20<sup>th</sup> June 2023

## 1. Summary

The building is the administration block for the Blue Bird toffee factory. It is being converted into apartments.

Current Function	Factory Office
Original Function	Factory Office
Period	Modern
Century	20th
Precise Date	1925-7
Architectural Style	Neo-Georgian
Architect	S N Cooke FRIBA
Materials	Brick, concrete
Designation	Listed Grade II
Conservation Area	Not located within a conservation area

The following phases of construction are present:

Phase	Period	Date	Description	How Dated
1	Modern	1925-7	Main structure of building	Date stone
2	Modern		Internal alterations and subdivisions	Plan form



## 2. Introduction

### 2.1 The Building

The building is a former office building – the purpose-built administration block for the Blue Bird toffee factory. It is being converted into apartments.

### 2.2 The Client

This report was commissioned by J Richards of Seven Capital (Halesowen) Ltd. and subsequently Malvern Estates Ltd.

### 2.3 Copyright

The copyright of this report belongs to the Historic Environment Consultancy. No liability to third parties is accepted for advice and statements made in this report.

### 2.4 Location

Site Address:	Administration Building Blue Bird Park Bromsgrove Road Hunnington Worcestershire
Post Code:	B62 0JW
Grid Reference:	SO 96679 81424
National Co-ordinates	396679 281424
Latitude and Longitude	52.430785 -2.0502710

The general location is shown in Figure 1 and the detailed location in Figure 2.

### 2.5 Date of Recording

The building was initially visited by Dr Peter Wardle in July & October 2019. Subsequent visits were made by Dr Wardle and Colin Lacey between this point and September 2022.

### 2.6 Circumstances of The Project

The recording of the building was required as a condition of a grant of planning permission and listed building consent reference Bromsgrove Borough Council 19/00592/FUL for:

*“Part demolition and site clearance of the former Blue Bird factory site for its redevelopment to provide 116 residential dwellings (Use Class C3), consisting of both new dwellings and conversion of the Welfare and Administration buildings, along with associated landscaping; drainage; engineering; highways and access works”.*

The wording of the planning condition is as follows:

*No development shall commence until a programme of research and building recording including a Written Scheme of Investigation(s), has been submitted to and approved by the local planning authority in writing. The scheme shall include an assessment of significance and research questions; and:*

- a) The programme and methodology of site investigation and recording which will include:*
- 1. A Level 3 historic building recording (as defined by Historic England) on all pre 1980s buildings. This will include documentary research.*
  - 2. A Level 1 historic building recording (as defined by Historic England) on warehouses, dating to the 1980s.*

3. *Investigative works prior to and during construction works to recover structural information.*

*b) The programme for post investigation assessment.*

*c) Provision to be made for analysis of the site investigation and recording.*

*d) Provision to be made for publication and dissemination of the analysis and records of the site investigation*

*e) Provision to be made for archive deposition of the analysis and records of the site investigation*

*f) Nomination of a competent person or persons/organisation to undertake the works set out within the Written Scheme of Investigation.*

*REASON: In accordance with the requirements of paragraph 194 of the National Planning Policy Framework.*

## **2.7 Location of The Archive**

The archive of this project consists solely in the form of digital records. This report contains 667 high resolution photographs and 40 plans and elevations. The drawings are appended to the report as layered vector files. Copies of this report in pdf format therefore represents the archive.

Copies of this archive are therefore given to the Archaeology Data Service and Worcestershire County Council Historic Environment Record.

## **2.8 Methodology**

The building was recorded according to the requirements set out in the English Heritage 2016 *Understanding Historic Buildings A Guide to Recording Practice* and the method statement.

There were no difficulties experienced in the recording process.

## **2.9 Reference Numbers**

Planning Reference Number: 19/00592/FUL

OASIS ID: thearcha1-516388

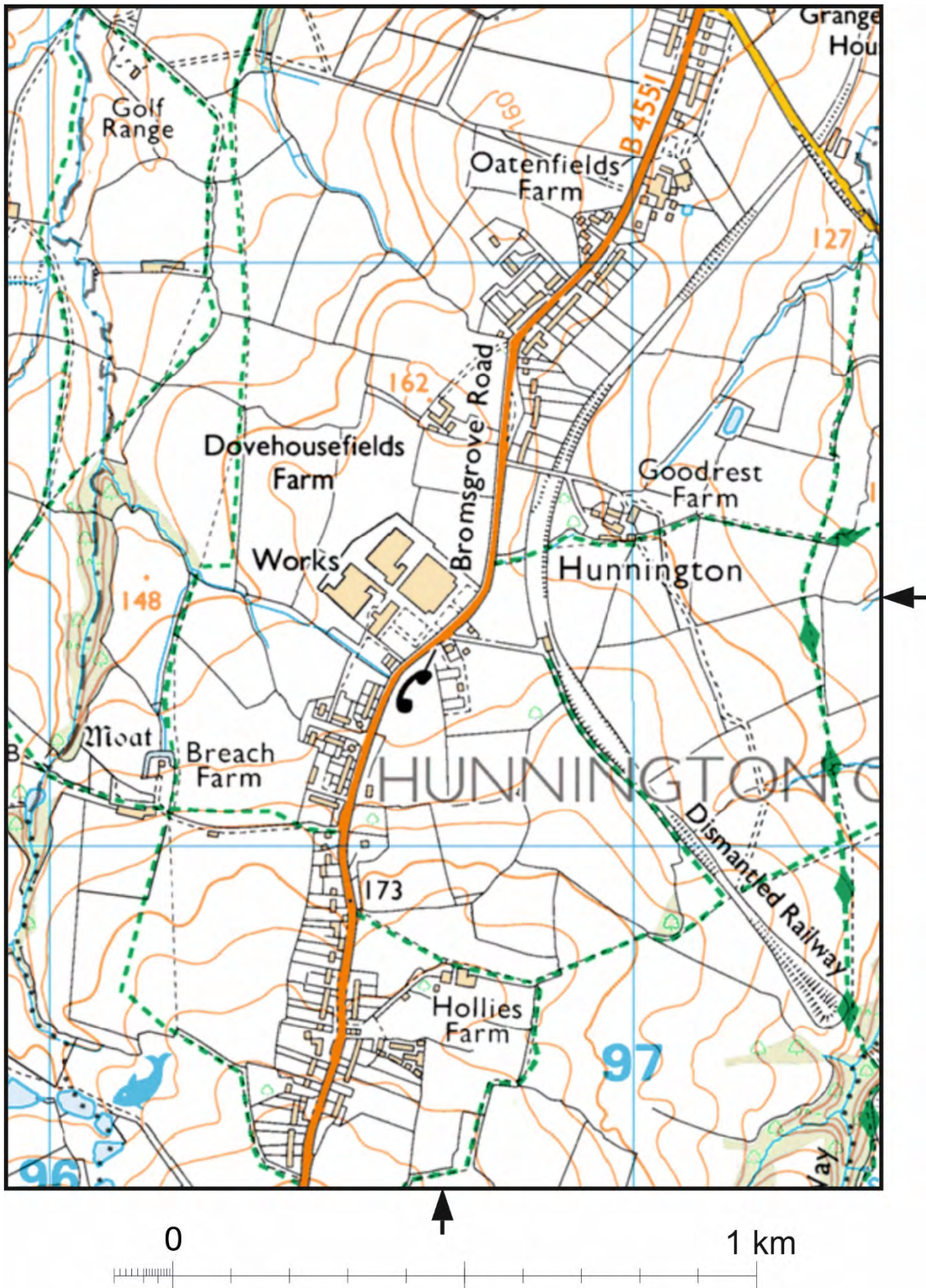
HER Event No. WSM80084

Listing Reference Numbers:

1464601 (Administration Building)

1466995 (Canteen)

1466996 (Walls, Railings and Gates)



Metres 1:10,000 @ A4

Figure 1: General Location Plan, 1:10,000 @ A4



**Figure 2: Detailed Location Plan. Scale 1:2500**

### 3. Historic Background

#### 3.1 Documentary Evidence

An article was published in *The Midlander* in February 1927. The article details the background behind the Blue Bird factory and the village of Hunnington describing the history of the Messrs Harry Vincent Ltd and Harry Vincent, himself.

The article describes the administration building as follows:

*The main entrance, with its flight of broad steps and its massive Doric columns of Portland stone suggests rather the porch-way of some beautiful Municipal building than that of a modern factory shortly destined to become a veritable hive of industry for the manufacture of sweets for the sweet.*

*The Administration block is an extremely handsome building extending along the front of the main buildings, throughout which, every possible care has been taken to ensure a maximum of light and air – an essential feature in any factory.*

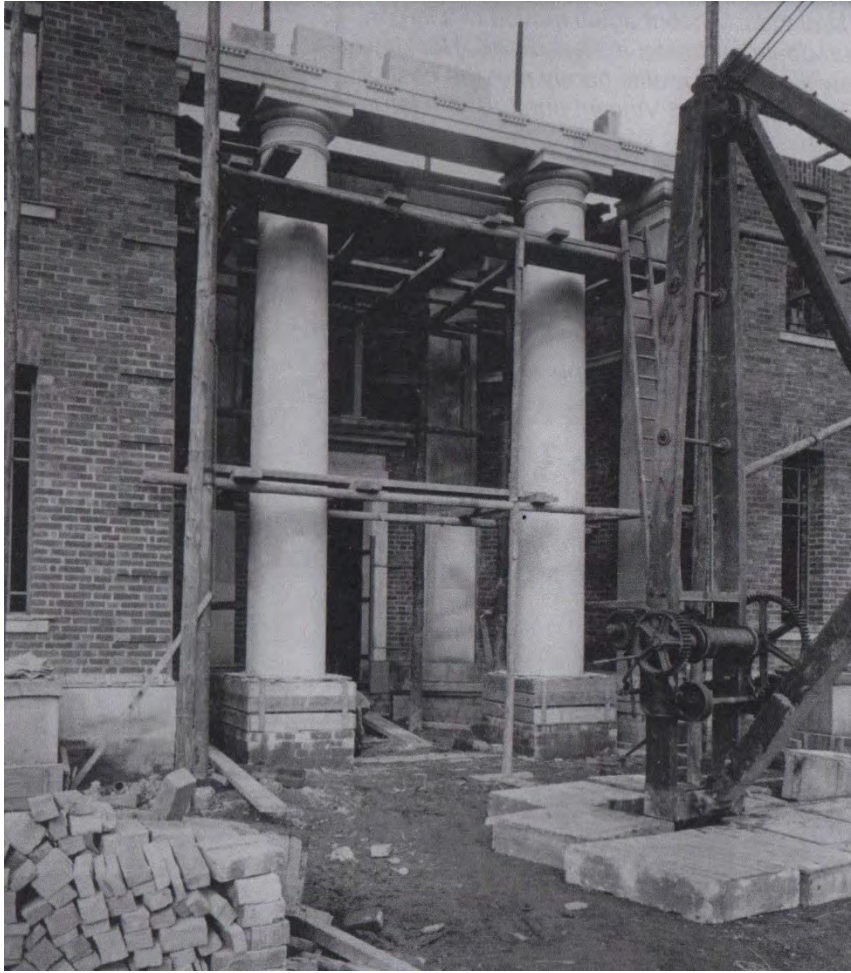
A newspaper article from the *Birmingham Gazette*, published on the 13<sup>th</sup> May 1930, concerning the factory does not mention the administration building.

#### 3.2 Historic Photographs



**Plate 1: c. 1930 photograph showing southeast aspect (Blue Bird Album, Romsley & Hunnington History Society)**

### 3.3 Under Construction



**Plate 2: The entrance under construction, 1927 (Blue Bird Album, Romsley & Hunnington History Society)**



**Plate 3: The northeast part of the building under construction, 1927 (Blue Bird Album, Romsley & Hunnington History Society)**



**Plate 4: The southeast face of the building under construction, 1927 (Romsley & Hunnington History Society)**

### 3.4 Aerial Views



**Plate 5: Aerial view, 1936 (Britain from Above)**



**Aerial view, 1936 (Britain from Above)**

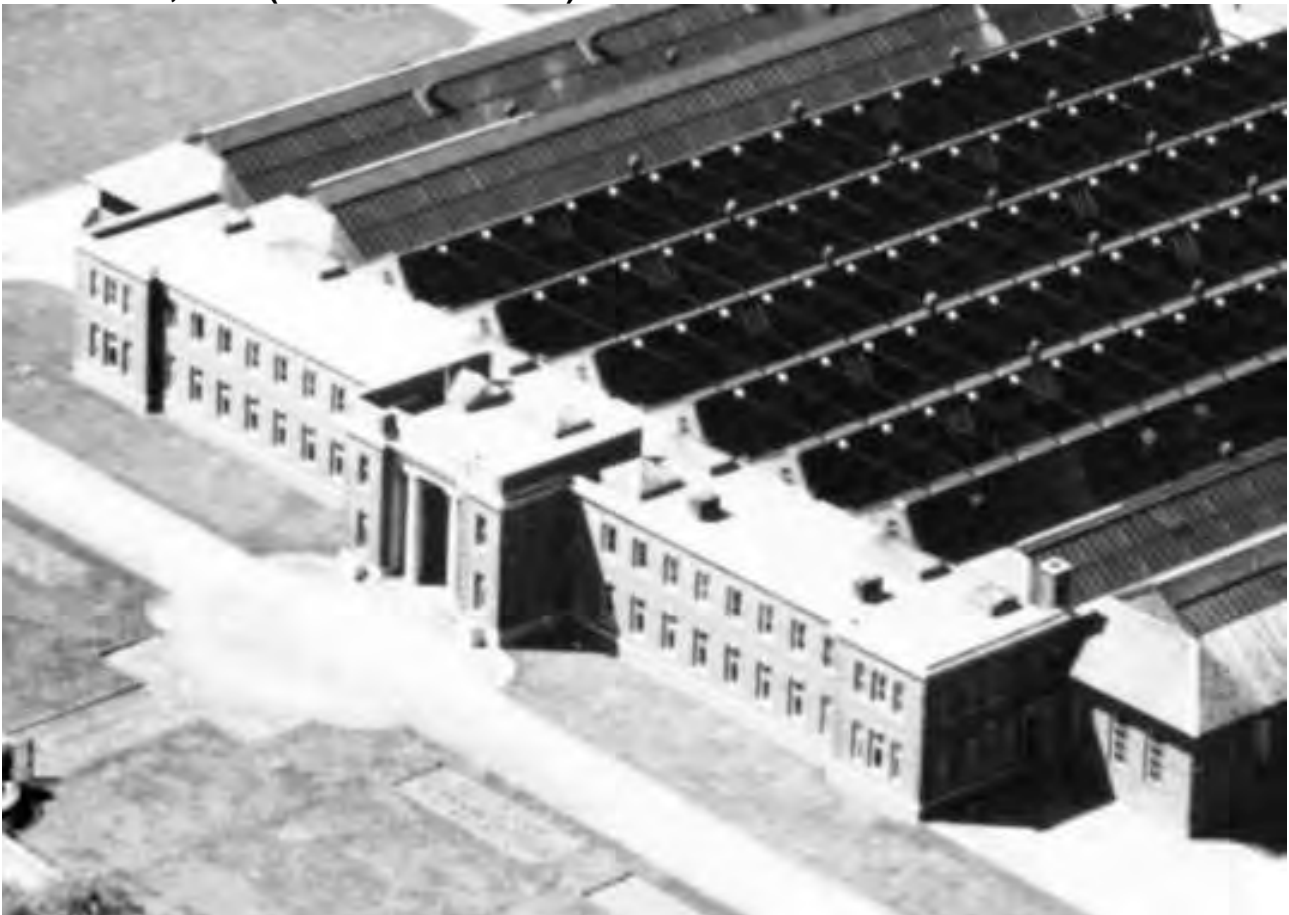


**Aerial view, 1936 (Britain from Above)**





**Aerial view, 1948 (Britain from Above)**



**Aerial view, 1948 (Britain from Above)**

### 3.5 General Views.



**Plate 6: The administration building in 1958**

(still from Midlands News <https://www.macearchive.org/films/midlands-news-02061958-donald-campbell-blue-bird-toffee-factory>)



**Plate 7: View from southwest gate, c. 1990s (<http://www.bennett-family.me.uk>)**



**Plate 8: View from central gate, c. 1990s (<http://www.bennett-family.me.uk>)**



**Plate 9: 1930s photograph showing south aspect (Blue Bird Album, Romsley & Hunnington History Society)**



**Plate 10: 1930s photograph showing southeast aspect (Blue Bird Album, Romsley & Hunnington History Society)**

## 4. The Building

### 4.1 The Building

Administration block for the Blue Bird toffee factory.

Current Function	Factory Office
Original Function	Factory Office
Period	Modern
Century	20th
Precise Date	1925-7
Architectural Style	Neo-Georgian – Classical
Architect	S N Cooke
Materials	Brick, concrete
Designation	Listed Grade II
Conservation Area	not located within a conservation area

### 4.2 The Importance of the Building – Listing Criteria

Date		For modern buildings one of the other criteria has to be clearly met.
Rarity		This is a common type of building
Architectural Interest		
	Architect	The building was designed by the prominent Birmingham architect SN Cooke and was developed in the spirit of the period.
	Innovation	This building does not use innovative building techniques or materials.
	Virtuosity	The building demonstrates a fairly high standard of craftsmanship.
	Plan Form	The plan form is not particularly significant and has in places been altered.
Historic Interest		This building does not illustrate important aspects of the nation's history. It is not associated with a Nationally Important person.
Group Value		There is a group value with the other contemporary Blue Bird factory buildings.
Contribution of Setting		The setting of the building makes no difference to the reason for listing.

### 4.3 The Importance of the Building using Understanding Heritage – Values Conservation Principles Policies and Guidance 2008

Evidential		The building dates from a period when the physical evidence of the building adds little novel information.
Historical		
	Illustrative	Low The building does not illustrate an unusual historic connection.
	Association	Fair The building is associated with Harry Vincent, a <b>locally</b> known businessman and manufacturer of nationally known brands of confectionery
Aesthetic		

	Design	Design is not a factor in the special interest of this building.
	Detailing & Craftsmanship	The building demonstrates a good standard of craftsmanship but is not exceptional.
	Architect	The building designed by SN Cooke, a prominent Birmingham architect.
	Innovation	This building does not use innovative building techniques or materials.
Communal		The building has been used by large numbers of people so there is a social value. Most Britons above a certain age have eaten a Blue Bird toffee or a Woolworths pick and mix

#### 4.4 Designation

The building is a Grade II listed building and the listed building description is as follows:

*The former Administration Building to the factory designed by S N Cooke and built in 1925-7 for Harry Vincent Limited of Birmingham, manufacturers of Blue Bird toffee.*

##### *Reasons for Designation*

*The former Administration Building at Blue Bird Toffee Factory (Harry Vincent Limited), Hunnington, Worcestershire, is listed at Grade II for the following principal reasons:*

##### *Architectural Interest:*

*\* the neo-Georgian design of the Administration Building by prominent Birmingham architect SN Cooke is assured and well-realised, remarkably so for its provincial location;*

*\* the building retains high quality fittings and fixtures throughout, including sumptuous fittings to the Director's Office and stair foyer in the Administration Building, as well as tiled corridors and lobby spaces, and timber fenestration to internal spaces.*

##### *Historic Interest:*

*\* the factory and Hunnington Model Village was developed in the spirit of the period: sited in a clean, rural location with good modern transport links and with improved standards of welfare and well being; \* as a regionally significant element of the continuation of model village development, begun nearby at Bournville in the late C19.*

##### *Group Value:*

*\* with the adjacent former Welfare Building (listed at Grade II) it forms a legible grouping of the administrative and social focal points of a notable interwar factory at the centre of a new model village;*

*\* the front boundary treatment (listed at Grade II) provides a distinctive and contemporary setting to the building and to the factory site as a whole.*

##### *History*

*The factory was designed and built in 1925-7 for Harry Vincent Limited of Birmingham, manufacturers of Blue Bird toffee. The factory scheme was by S N Cooke FRIBA, of Birmingham, and included a model village (24 of the planned 100 houses were built) village shop with post office, cricket pavilion and other*

Blue Bird Park Building Recording: Appendix 1 The Administration Building  
*leisure buildings. The modern and hygienic factory design was noted in the Birmingham Gazette in May 1920, as part of an article tracing the swift rise to prominence of manufacturer Harry Vincent. It also remarks on the generous facilities provided for the workers and villagers.*

*The Administration Building is shown as part of the factory on the Ordnance Survey Map of Worcestershire of 1938 (Epoch 4), with the Welfare Building (listed at Grade II) to the south west and two warehouse buildings to the rear (west) of the site. Some alterations have been carried out to the Administration Building in the later C20.*

*At the end of the C20 the factory ceased operation and parts of the site have served other uses since that time. In 2019 the buildings were subject to proposals for redevelopment.*

#### *Details*

*Former factory offices of 1925-7 constructed to the designs of S N Cooke for Harry Vincent Limited.*

*MATERIALS: constructed of red brick, with stone dressings. The roof is flat with an unknown covering and lantern lights. The interior has oak, stone and bronze fittings to the Director's Suite and to some other principal rooms. The entrance hall and main stair are stone-clad, and there is glazed tiling to the corridors on each floor. The interior window frames are of timber and the exterior window frames are of powder-coated aluminium. Some internal doors are modern.*

*PLAN: set back facing the road it is of two-storeys and of single-depth. The building is constructed on a north-east/ south-west orientation and the attached factory to its rear is not of special interest.*

*EXTERIOR: the principal front is of neo-Georgian design with brick quoins and ashlar dressings to the mixed-bond brick elevations. The central portico entrance is in the Doric Order including two columns with entasis. The brick parapet above has inscribed tablets that read HARRY VINCENT LTD. Set back to either side of the entrance are eight-window wings plus corner bays breaking forward. The wings have ashlar plinths and parapets, and regularly-spaced openings with later-C20 margin-glazed frames, stone cills and flat brick heads with ashlar keystones. The flank elevations each have margin-glazed openings to each floor and a door with ashlar case. The rear elevation is enclosed within the factory building and finished with glazed tiles.*

*The recessed, semi-circular main entrance has Doric pilasters between Flemish bond brickwork, and is stone-flagged. To the left is a foundation stone inscribed: THIS STONE WAS LAID/ BY/ MRS HARRY VINCENT/ JULY 25TH 1925. The central door entrance has a stone case with moulded architrave and hood. The double-leaf doors have bronze furniture and leaded glazing to a shell design.*

*INTERIOR: the entrance vestibule and open-well staircase is clad in stone. The staircase has a steel balustrade with stone newels. The balustrade is carried through to the upper level landing that is lit by a lantern. A stone block to the half-landing wall is inscribed: SIR HARRY VINCENT/ LLD/ 1874-1952/ FOUNDER OF THIS COMPANY/ A man of hope/ and forward-looking mind/ Even to the last. Late-C20 double-leaf doors lead to the tiled first-floor corridor, which is lit by four lanterns. There are single-flight stairs at each end of the*

Blue Bird Park Building Recording: Appendix 1 The Administration Building  
corridor with oak handrails, square newels and stick balustrades, which have been enclosed in later glazing at ground floor level. At the north end of the first floor is the Director's office, fitted with oak panelling and columns, a marble chimneypiece with bronze grate, and light fixtures. The adjacent office has oak wainscoting and a stone chimneypiece with marble tiling. Other offices to the first floor include fittings and feature of note: a stone chimneypiece with oak overmantel, a leaded ceiling lantern and a strong room with door by Whitfield's Safe and Door Company, London. To the ground floor are further oak doors, glazed partitions, timber sashes with leaded and frosted glazing, and a stone chimneypiece. The corridor is covered in glazed tiles to dado level. Some rooms have been reordered. A door with upper glazing is at each end of the ground floor and each gave access to the former factory building.

#### *Selected Sources*

##### *Books and journals*

*Pevsner, N, Brooks, A, The Buildings of England: Worcestershire, (2007), 581*

##### *Websites*

*Romsley & Hunnington History Society: An Industrial Romance, The Midlander, February 1927, accessed 10/07/2019 from <https://www.rhhs.org.uk/local-history/bluebird.html>*

##### *Other*

*'Messrs Harry Vincent's Model Factory and Garden Village.', The Retail Confectioner, January 1927, 13-17*

*One of the largest toffee makers in the world, Birmingham Gazette, 13 May 1930*



**Plate 11: The main entrance**





**Plate 12: The southwest elevation**

#### **4.5 The Layout of The Building**

The layout of the building is shown overleaf.

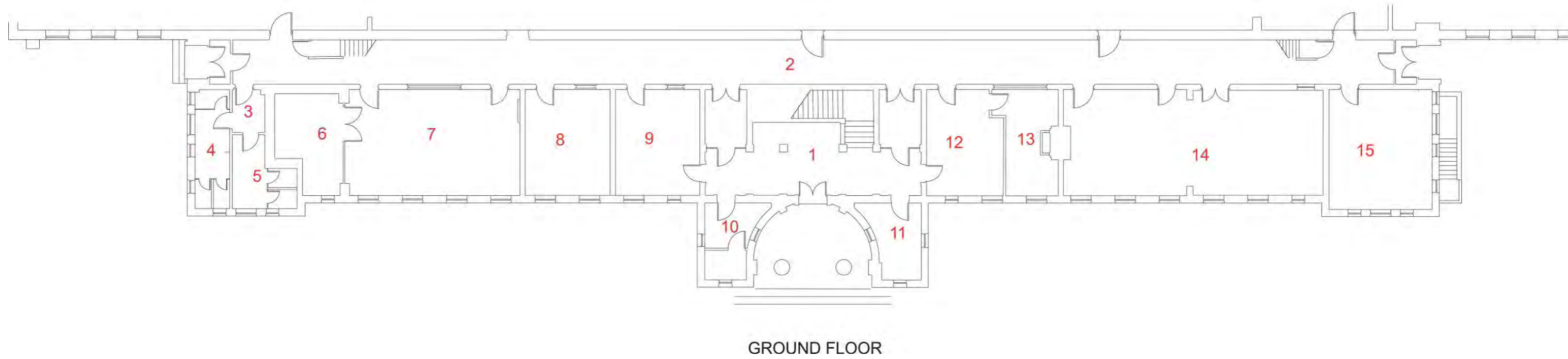


Figure 3 The Ground Floor, 1:200 @ A3

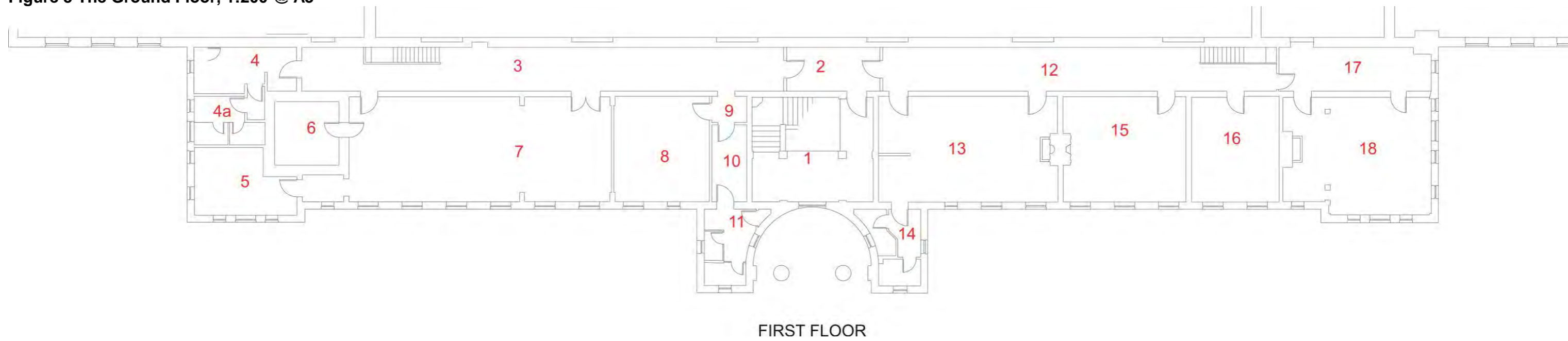


Figure 4: The First Floor, 1:200 @ A3

#### 4.6 The Date of the Building

The building was built in the years between 1925 and 1927.

#### 4.7 The Construction Sequence

The following Phases of construction are present:

Phase	Period	Date	Description	How Dated
1	Modern	1925-7	Main structure of building	Date stone
2	Modern		Internal alterations and subdivisions	Plan form

Phased plans are reproduced below.

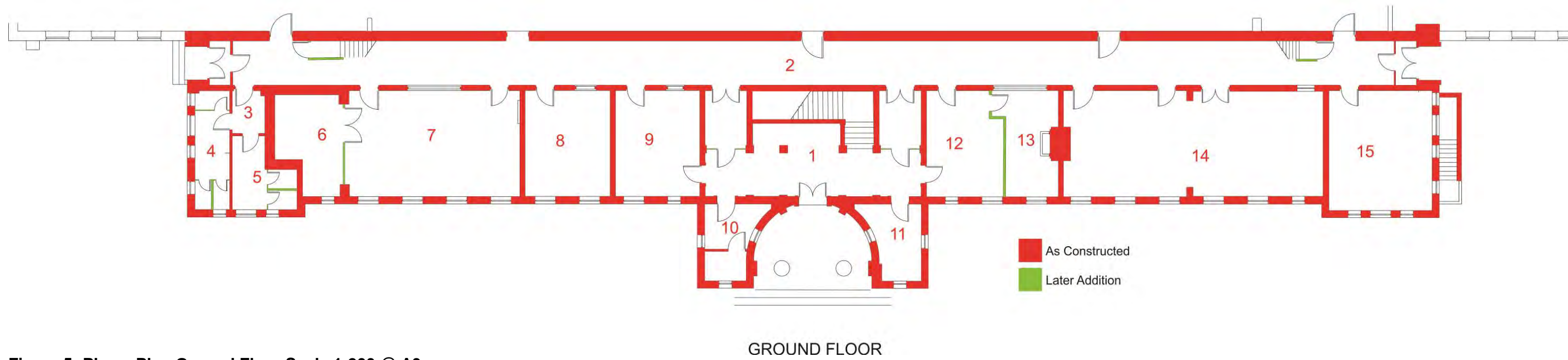


Figure 5: Phase Plan Ground Floor Scale 1:200 @ A3

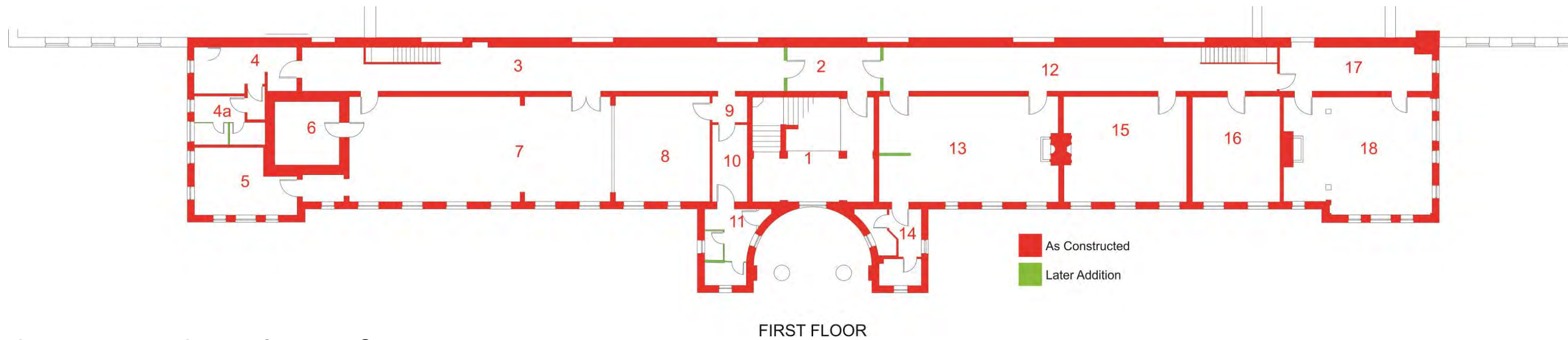


Figure 6: Phase Plan First Floor Scale 1:200 @ A3



Figure 7: Phased southeast elevation, 1:200 @ A3

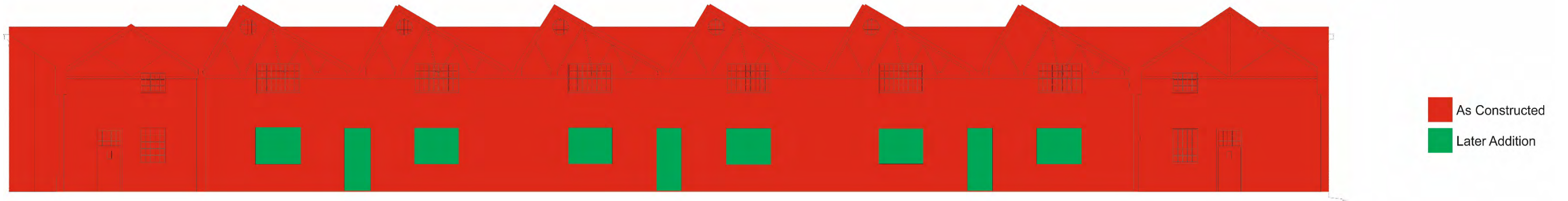


Figure 8: Phased northwest elevation, 1:200 @ A3

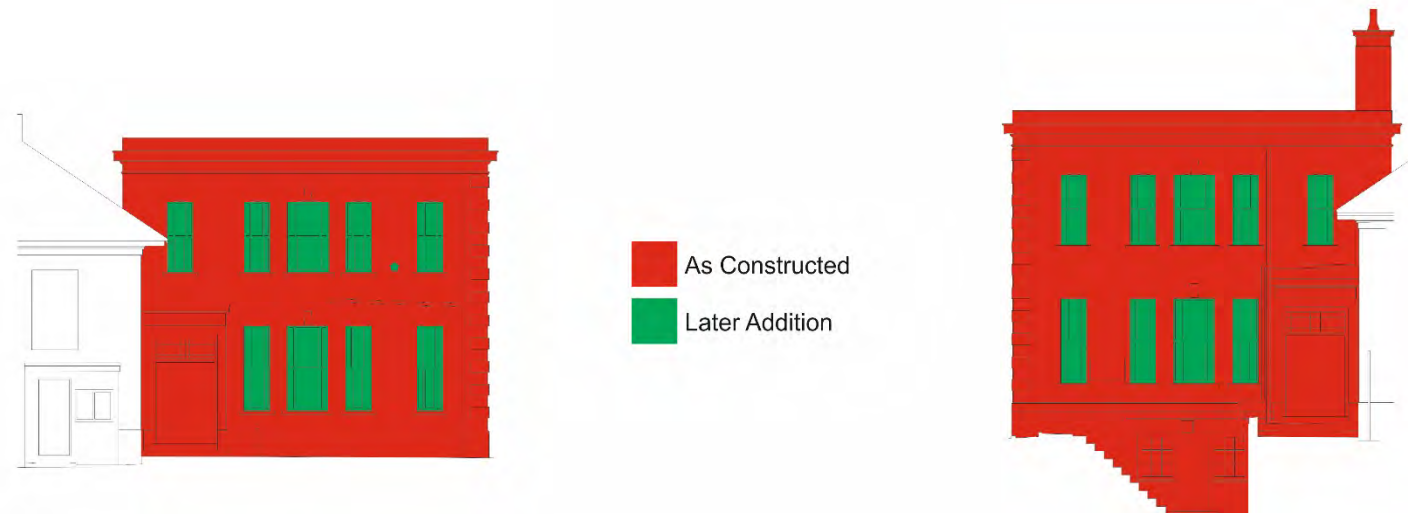


Figure 9: Phased southwest and northeast elevations, 1:200 @ A3

#### 4.8 The Plan Form of The Building As Originally Built

The building has only minor changes from its original plan form.

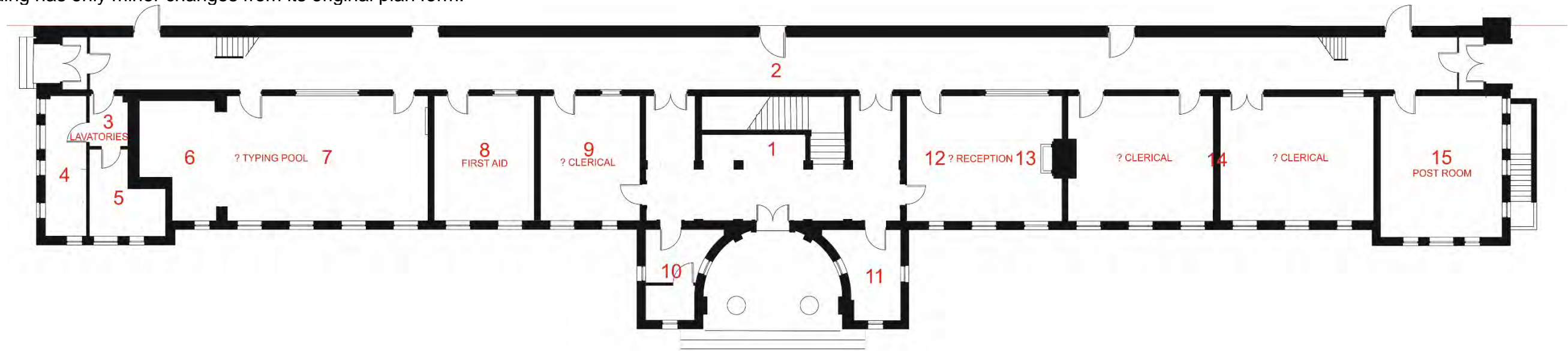


Figure 10: Ground floor as built, 1:200 @ A3

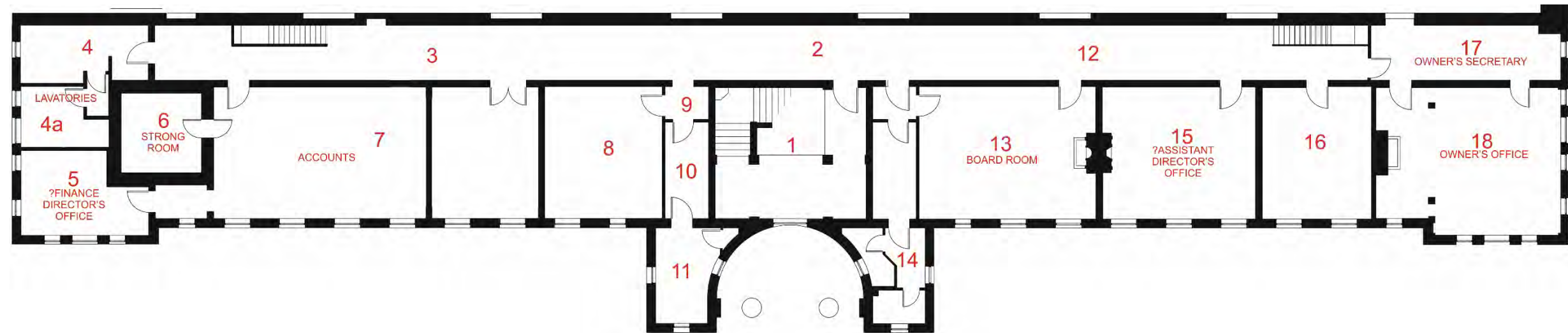


Figure 11: First floor as built, 1:200 @ A3

*Note that room numbering follows the current layout. Rooms without numbers are now part of an adjacent room.*

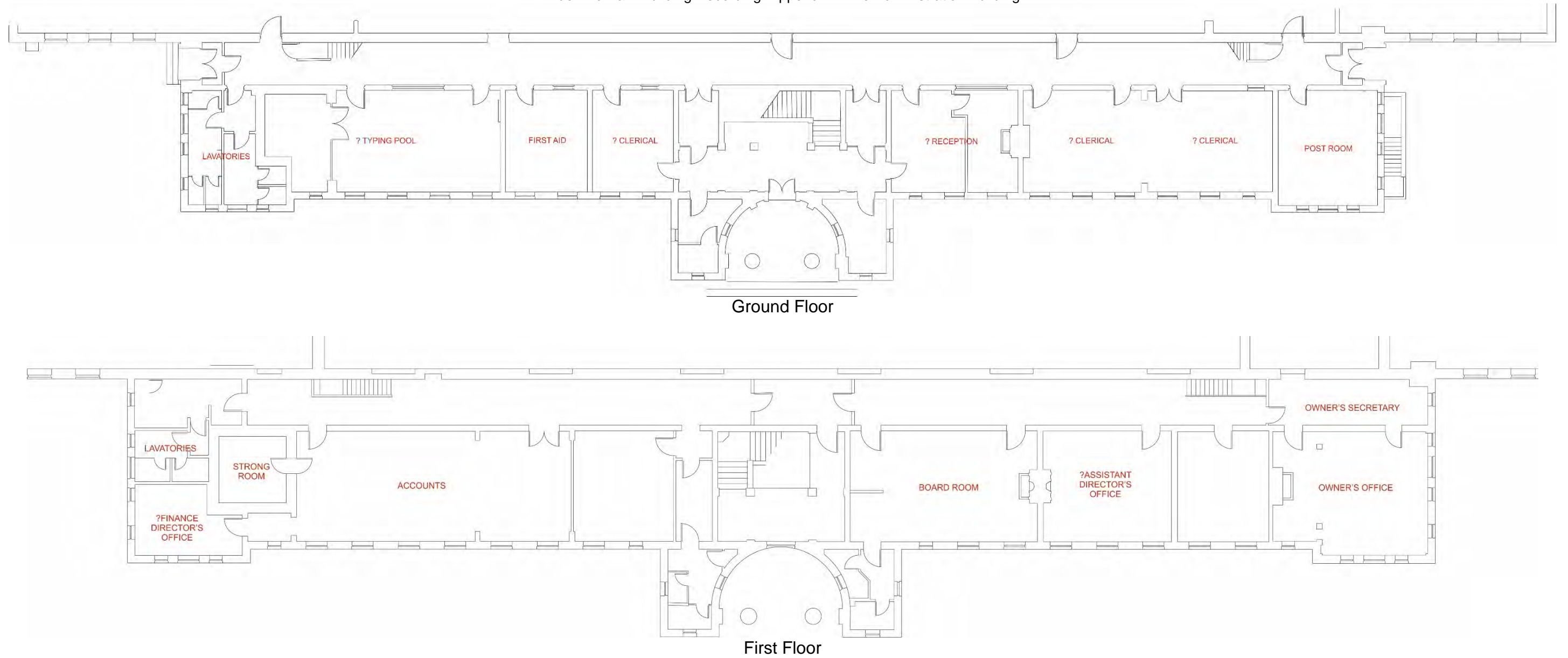


Figure 12: Original Functions, 1:200 @ A3

## 5. Description: Exterior



**Plate 13: Southwest part, southeast elevation**

The administration building is a linear structure arranged in a northeast-southwest orientation. The exterior of the building is symmetrical. A central entrance section projects to the southeast, with a wing set back to either side. The ends of the wings project a short distance to the southeast. Each wing has twelve windows along its width and five across its depth.

The building is constructed of machine-made red brick in Common Bond, with a cement mortar matrix. Brick quoins are present on each corner. The roof is flat with a parapet of ashlar. The walls of the entrance section are constructed on an ashlar plinth and an ashlar string course runs around the walls of the northeast and southwest wings. Further ashlar dressings are present as keystones above the windows and sills below. The windows are set in powder-coated aluminium frames and are more recent additions to the structure.



**Plate 14: Detail of windows**





**Plate 15: Central part, southeast elevation**



**Figure 13: The entrance after completion (Romsley & Hunnington His Soc)**



**Plate 16: Northeast part, southeast elevation**



**Plate 17: Detail of central entrance, southeast elevation**



**Plate 18: Inscription over entrance**

The central entrance is recessed from the front of the projecting section. The door is set to the rear of a semi-circular area with steps down to the forecourt. The entrance is flanked by a pair of Doric columns with further Doric pilasters continuing the decoration on the walls of the porch area, which are of red brick in Flemish bond. The lower parts of the central double doors are panelled, with glazed uppers fitted with ornamental iron grilles. The door surround features a projecting moulded architrave and hood.

Left of the door, the returning wall contains a foundation stone, engraved with the following:

THIS STONE WAS LAID  
BY  
M<sup>RS</sup> HARRY VINCENT  
JULY 25<sup>TH</sup> 1925



**Plate 19: Foundation stone**



**Plate 20: Elevated view, façade, southwest wing**



**Plate 21: Elevated view, façade, centre**



**Plate 22: Elevated view, façade, northeast wing**



**Plate 23: Southwest elevation**

The southwest and northeast elevations of the building each have a doorway at their northwest end. The double doors each have two panels, with a fixed light above. The doors have plain ashlar surrounds. That to the southwest has a light fitting considered to be original fitted above, whereas the northeast door has a more recent example.



**Plate 24: Detail of light fitting above southwest door**



**Plate 25: Northeast Elevation**



**Plate 26: Northeast door**

At the northeast end of the building, a flight of stone steps leads down to a basement area.



**Plate 27: Staircase to basement / plant room**



**Plate 28: Staircase to basement / plant room**

A single door is present at the foot of the staircase leading into the basement \* plant room. The door has a single panel above which 2x3 pane glazing is present. The door is flanked on each side by a 3x3 pane fixed light window.



**Plate 29: Exterior of plant room / basement**



The rear (northwest) wall of the building is shared with the main factory building. A number of doors and windows once led between the buildings with a number of these having been blocked at an unknown date. To reflect the cleanliness required in the factory, the outside of the northwest wall is constructed of glazed brick.

Of the doorways, that from the administration building to room 3 of the manufactory had a single door (which is still operational), From the administration building to room 4 of the manufactory (the main manufactory space), three blocked doorways are present. One operational doorway is present from the administration building to manufactory room 5.

In manufactory rooms 4 and 5, the wall is clad with green and white tiles whereas in room 3, the wall is of painted brick. The roof of the manufactory is lower than the height of the northwest wall of the administration building which butts against the administration building structure, hence the wall finishes detailed above follow the profile of the manufactory roof (straight over rooms 3 and 5, owing to these parts of the manufactory having hipped roofs, sawtooth over room 4 owing to the roof profile of the main manufactory area). Above this, the northwest wall of the administration building is considered to be plain brick, matching the front and sides of the building.



**Plate 30: Door and windows to administration building in southeast wall of manufactory room 3**



: Blocked windows and doorways to administration building in southeast wall of manufactory room 4

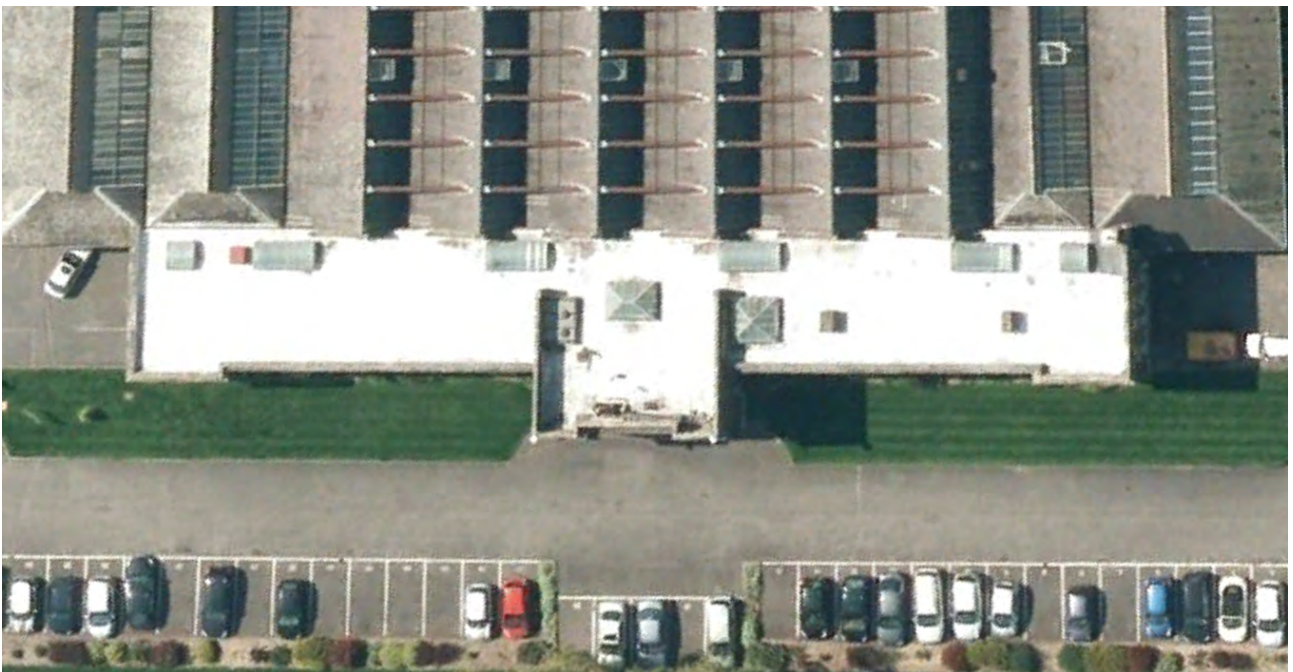


Plate 31: Door and windows to administration building in southeast wall of manufactory room 5

The roof of the manufactory can be seen in aerial photographs to be flat with a low parapet. Roof lights / lanterns are present over the first floor corridor along the northwest of the building, with a further example over the main staircase and one above room 13.



**Plate 32: Aerial image of the administration building (commissioned for this exercise, September 2022)**



**Plate 33: The roof of the administration building (Google Earth, 2012)**

## 6. Description: Ground Floor

### 6.1 Ground Floor Room 1 Entrance Hall

Current Function	Entrance Hall
Original Function	Entrance Hall
Phase	1
Plan Form	Altered - modern glass partitions installed
Door	NW: Modern glass doors. NE & SW: Half-glazed panelled 1920s, fitted with obscure glass. SE: Double entrance doors, panelled lower with glazed upper, fitted with pierced panel over glazed section.
Windows	Internal multi-pane leaded lights, obscure-glazed. Replacements have been made in some locations with obscure-glazed wired glass, some fixed parallel to leadwork, affixed with battens, else fitted in replacement of entire window.
Fireplace	None
Historic Features	Marble wall coverings and pillars, marble floor and staircase (closed string, bronze balustrade. Radiators.
Comments/Description	



Plate 34: Ground Floor Room 1 Looking Northeast



**Plate 35: Ground Floor Room 1 Looking Southwest**



**Plate 36: 1930s view of staircase (Blue Bird Album, Romsley & Hunnington His Soc)**



**Plate 37: Ground Floor Room 1 Looking Northwest**

## 6.2 Ground Floor Room 2 Corridor

Current Function	Corridor
Original Function	Corridor
Phase	1
Plan Form	Unaltered - narrow corridor spanning the length of the building
Door	
Windows	Fixed multi-pane internal leaded lights to SE, into rooms along frontage of building. Partitions at either end of corridor formed of leaded fixed windows with central doors.
Fireplace	None
Historic Features	Tiled floor, walls tiled or glazed brick over lower part. Staircase to southeast enclosed by modern wired glass.



**Plate 38: Ground Floor Room 2 Looking Northeast**



**Plate 39: Ground Floor Room 2 Looking Southwest**



**Plate 40: Staircase at northeast end of corridor**





**Plate 41: Partition at southwest end of corridor**

**Ground Floor Room 3 Lobby**

Current Function	Lobby
Original Function	Lobby
Phase	1
Plan Form	Unaltered - small anteroom leading to ladies and gents lavatories
Door	Two-panelled 1920s doors with round brass handles
Windows	Fixed 4x3 leaded light over door to corridor
Fireplace	None
Historic Features	None



**Plate 42: Ground Floor Room 3 Looking Southeast**



**Plate 43: Ground Floor Room 3 Detail of Door**



**Plate 44: Ground Floor Room 3 Looking Northwest**

### 6.3 Ground Floor Room 4 Ladies Toilet

Current Function	Ladies Toilet
Original Function	Toilet
Phase	
Plan Form	Altered - Modern cubicle partitions installed
Door	Two-panelled 1920s doors with round brass handles
Windows	Obscure-glazed modern Powder Coated Aluminium
Fireplace	None
Historic Features	None



**Plate 45: Ground Floor Room 4 Looking Southeast**



**Plate 46: Ground Floor Room 4 Looking Northwest**



**Plate 47: Detail of window**

#### 6.4 Ground Floor Room 5 Gents Toilet

Current Function	Gents Toilet
Original Function	Toilet
Phase	
Plan Form	Altered - Modern cubicle partitions installed
Door	Two-panelled 1920s doors with round brass handles
Windows	Obscure-glazed modern Powder Coated Aluminium
Fireplace	None
Historic Features	None



**Plate 48: Ground Floor Room 5 Looking Southeast**



**Plate 49: Ground Floor Room 5 Looking Northwest**

### 6.5 Ground Floor Room 6 Storage

Current Function	Storage
Original Function	Anteroom
Phase	
Plan Form	Altered - modern partition to room 7. The walls of this room are thicker to support the strong room above.
Door	Modern
Windows	Modern Powder Coated Aluminium
Fireplace	None
Historic Features	None



**Plate 50: Ground Floor Room 6 Looking Southeast**



**Plate 51: Ground Floor Room 6 Looking Northwest**



## 6.6 Ground Floor Room 7 ?Seminar room

Current Function	Seminar room / office
Original Function	?Typing pool
Phase	
Plan Form	Altered - modern partition to room 6.
Door	Two-panelled 1920s door with round brass handles
Windows	Internal multi-pane leaded lights to corridor, external -modern Powder Coated Aluminium
Fireplace	None
Historic Features	Radiator



Plate 52: Ground Floor Room 7 Looking Northeast



**Plate 53: Ground Floor Room 7 Looking Southwest**



**Plate 54: Ground Floor Room 7 Looking Northwest**

### 6.7 Ground Floor Room 8 General Office

Current Function	Cash Office
Original Function	First Aid Room
Phase	
Plan Form	Unaltered
Door	Two-panelled 1920s door with round brass handles
Windows	Internal multi-pane leaded lights to corridor, external - modern Powder Coated Aluminium
Fireplace	None
Historic Features	Large 'Chubb' safe, suggesting this room was once used as a cash office, radiator.

Historic photographs show this room was once used as a first aid / medical room.



**Plate 55: Ground Floor Room 8 Looking Northeast**



**Plate 56: Ground Floor Room 8 Looking Southeast**



**Plate 57: Ground Floor Room 8 Looking Southeast, 1928 (Blue Bird Album, Romsley & Hunnington His Soc)**

The picture rail, size and spacing of windows and the trees and buildings viewed through the windows confirm this is room 8.



**Plate 58: Ground Floor Room 8 Looking Southwest**



**Plate 59: Ground Floor Room 8 Looking Northwest**

### 6.8 Ground Floor Room 9 Staff Room

Current Function	Staff Room
Original Function	Clerical
Phase	
Plan Form	Unaltered
Door	Two-panelled 1920s door to corridor with round brass handles, door to room 1 similar in style with obscure wired glass window.
Windows	Internal multi-pane leaded lights to corridor, external -modern Powder Coated Aluminium
Fireplace	None
Historic Features	Radiator
Comments/Description	



Plate 60: Ground Floor Room 9 Looking Northeast



**Plate 61: Ground Floor Room 9 Looking Southeast**



**Plate 62: Ground Floor Room 9 Looking Southwest**



**Plate 63: Ground Floor Room 9 Looking Northwest**



### 6.9 Ground Floor Room 10 Disabled Toilet

Current Function	Disabled Toilet
Original Function	Toilet
Phase	
Plan Form	
Door	c. 1920s single panel lower, frosted glazed single pane upper to room 1, internal two panel, uncertain date, to cubicle
Windows	Obscure-glazed modern Powder Coated Aluminium
Fireplace	None
Historic Features	Dividing wall to cubicle with timber framed windows above door height, parquet floor
Comments/Description	



Plate 64: View into Ground Floor Room 10



**Plate 65: Ground Floor Room 10 looking Southeast**



**Plate 66: Ground Floor Room 10 looking Southwest**

### 6.10 Ground Floor Room 11 Server Room

Current Function	Server Room
Original Function	Uncertain
Phase	
Plan Form	
Door	c. 1920s single panel lower, wired single pane upper
Windows	Modern Powder Coated Aluminium
Fireplace	None
Historic Features	Radiator
Comments/Description	



Plate 67: Ground Floor Room 11 Looking Northeast



**Plate 68: Ground Floor Room 11 Looking Southeast**



**Plate 69: Ground Floor Room 11 Looking Southwest**



**Plate 70: Ground Floor Room 11 Looking Northwest**

### 6.11 Ground Floor Room 12 Office

Current Function	Office
Original Function	?Reception
Phase	
Plan Form	Altered - modern partition inserted dividing this from room 13
Door	To room 1: c. 1920s single panel lower, wired single pane upper. To room 2: two-panelled 1920s with round brass handle. To room 13: Two panel door contemporary with partition wall, stylistically similar to 1920s doors although handle is lower.
Windows	Modern Powder Coated Aluminium
Fireplace	
Historic Features	Radiator
Comments/Description	



Plate 71: Ground Floor Room 12 Looking Northeast



**Plate 72: Ground Floor Room 12 Looking Southeast**



**Plate 73: Ground Floor Room 12 Looking Southwest**



**Plate 74: Ground Floor Room 12 Looking Northwest**

### 6.12 Ground Floor Room 13 Office

Current Function	Office
Original Function	?Reception
Phase	
Plan Form	Altered - modern partition inserted dividing this from room 12
Door	Two panel door contemporary with partition wall, stylistically similar to 1920s doors although handle is lower.
Windows	Internal multi-pane leaded lights to corridor, external -modern Powder Coated Aluminium
Fireplace	Yes
Historic Features	



Plate 75: Ground Floor Room 13 Looking Northeast





**Plate 76: Ground Floor Room 13 Looking Southeast**



**Plate 77: Ground Floor Room 13 Looking Northwest**

### 6.13 Ground Floor Room 14 ?Office

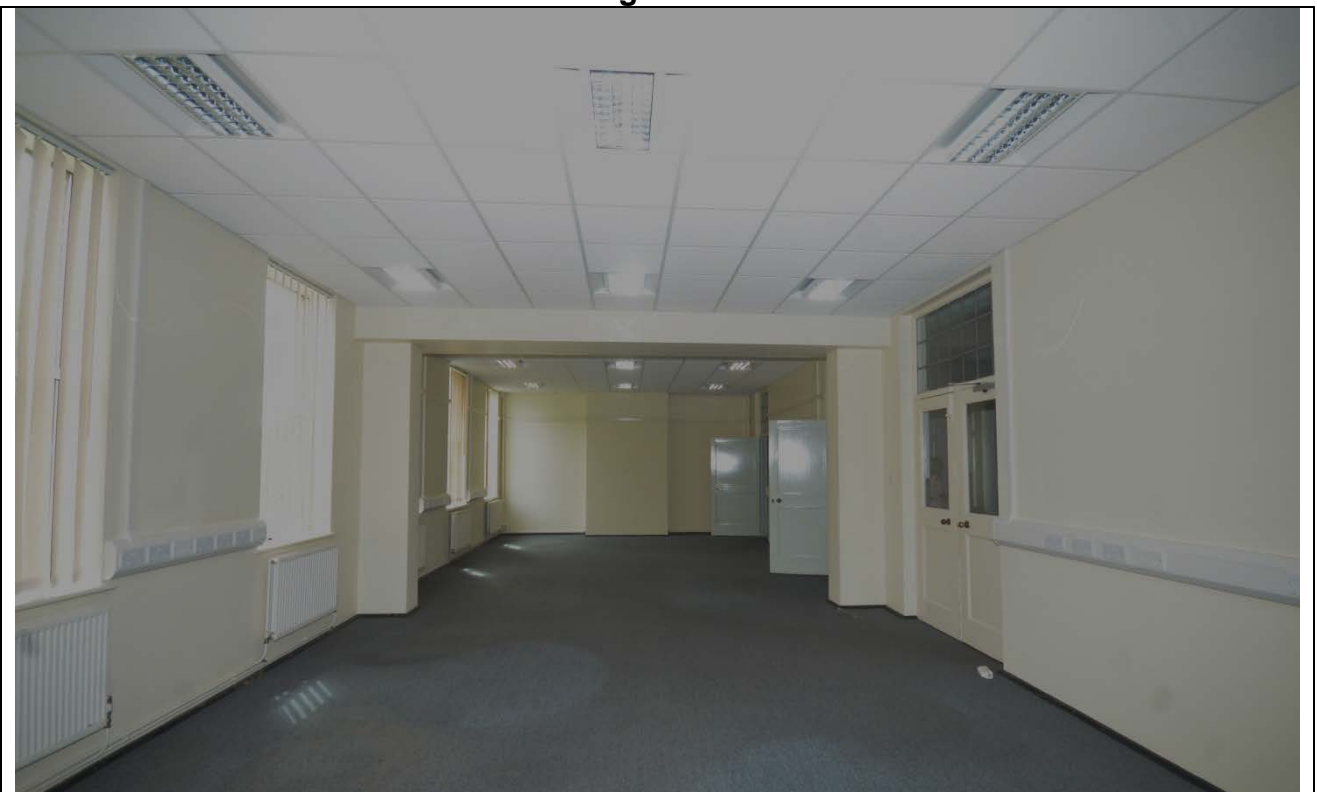
Current Function	?Office
Original Function	Two clerical offices
Phase	
Plan Form	Altered - formed from two previous rooms
Door	2x Two-panelled 1920s doors with round brass handles, 1x double door of similar date with single pane glazed upper part to each door, all leading to corridor
Windows	Modern Powder Coated Aluminium
Fireplace	Chimneybreast central to SW wall
Historic Features	
Comments/Description	



**Plate 78: Ground Floor Room 14 Looking Northeast**



**Plate 79: Ground Floor Room 14 Looking Southeast**



**Plate 80: Ground Floor Room 14 Looking Southwest**



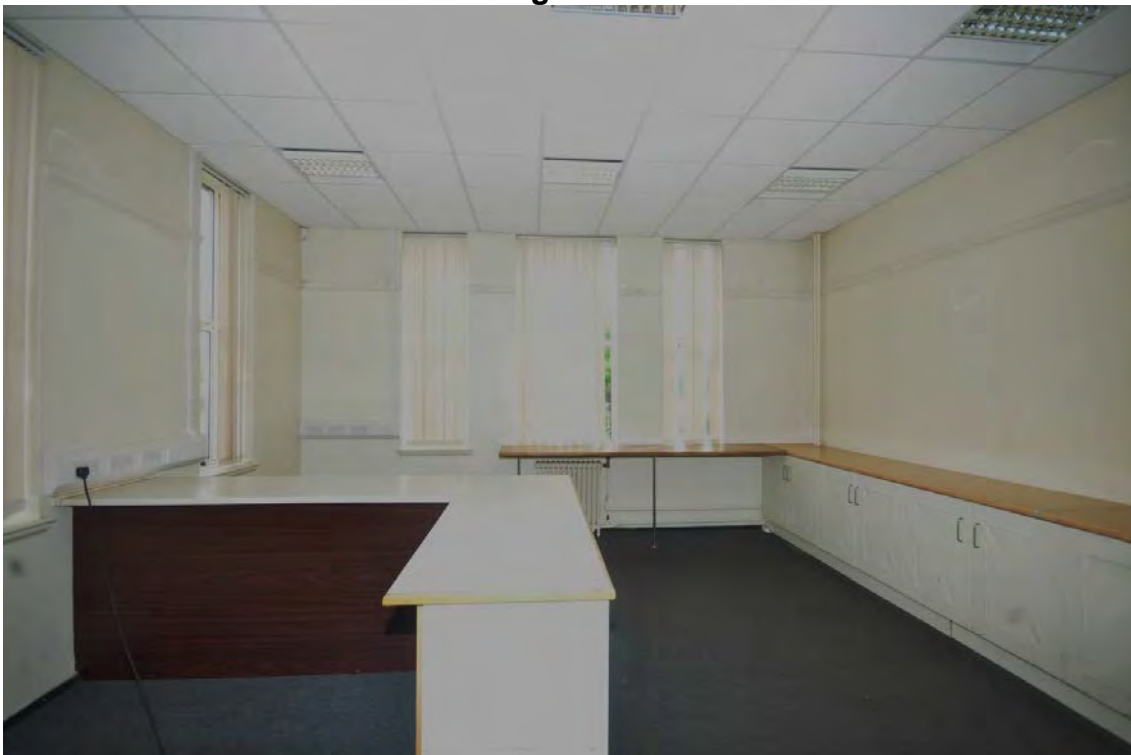
**Plate 81: Ground Floor Room 14 Looking Northwest**

### 6.14 Ground Floor Room 15 Distribution

Current Function	Distribution
Original Function	Post Room
Phase	
Plan Form	
Door	Two-panelled 1920s door with round brass handles
Windows	Internal multi-pane leaded lights to corridor, external -modern Powder Coated Aluminium
Fireplace	None
Historic Features	Radiator
Comments/Description	



Plate 82: Ground Floor Room 15 Looking Northeast



**Plate 83: Ground Floor Room 15 Looking Southeast**



**Plate 84: Ground Floor Room 15 Looking Southwest**



**Plate 85: Ground Floor Room 15 Looking Northwest**

## 7. Description: First Floor

### 7.1 First Floor Room 1 Stairs and Landing

Current Function	Stairs and Landing
Original Function	Stairs and Landing
Phase	
Plan Form	Unaltered
Door	3x3 glazed timber framed door, possibly replacement
Windows	Powder Coated Aluminium to frontage, lantern over
Fireplace	None
Historic Features	Marble staircase with ?bronze balustrade
Comments/Description	



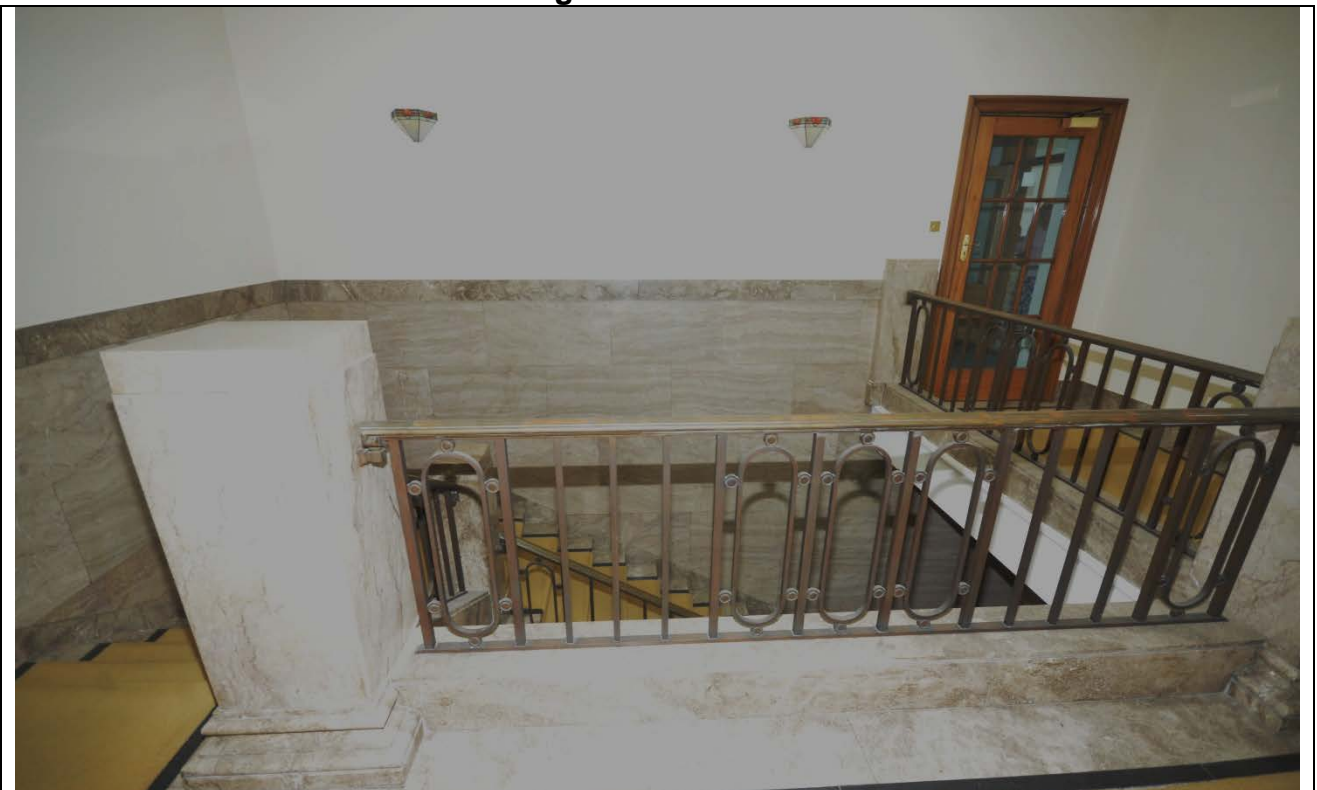
Plate 86: First Floor Room 1 Looking Northeast



**Plate 87: First Floor Room 1 Looking Southeast**



**Plate 88: First Floor Room 1 Looking Southwest**



**Plate 89: First Floor Room 1 Looking Northwest**





**Plate 90: Detail of lantern and hanging lights**



**Plate 91: Detail of marble plinth on staircase**



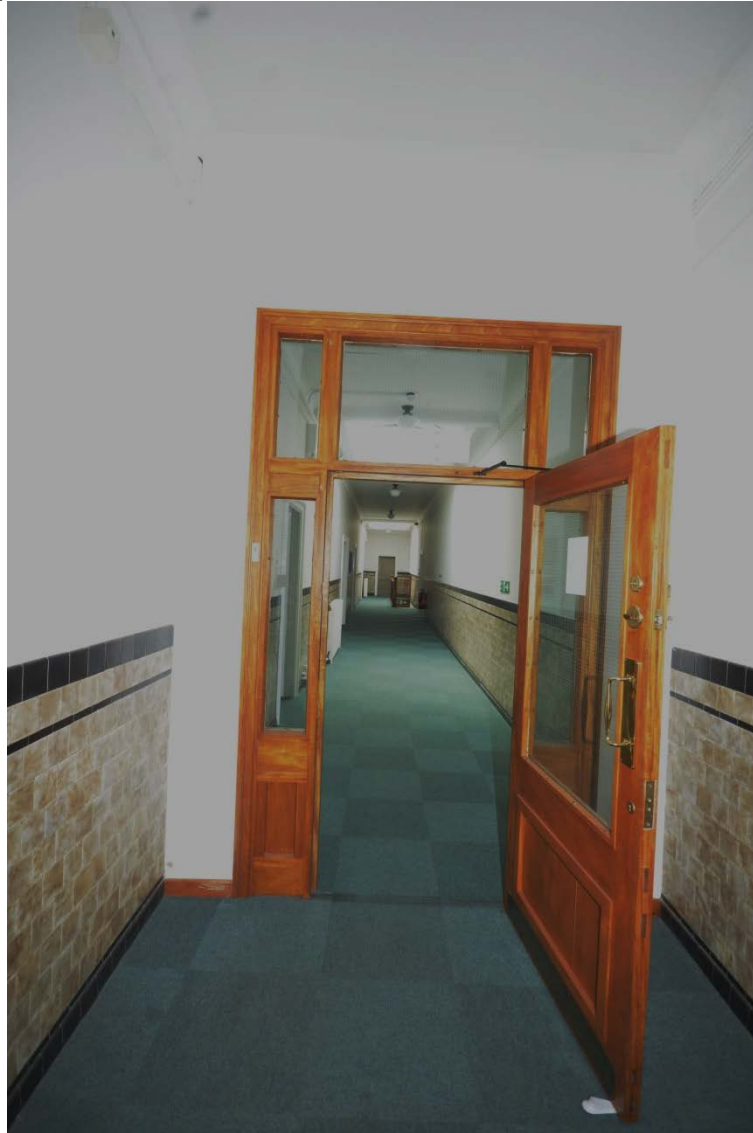
The plinth once held a bronze memorial bust of Harry Vincent, erected in 1957 following Vincent's death in 1952.

The inscription reads:

*SIR HARRY VINCENT  
LLD  
1874-1952  
FOUNDER OF THIS COMPANY  
A man of hope  
and forward-looking mind  
Even to the last*

**First Floor Room 2 Anteroom**

Current Function	Anteroom
Original Function	Anteroom
Phase	
Plan Form	Unaltered
Door	Two panel door with glazed upper
Windows	Glazed partition to corridors on either side
Fireplace	None
Historic Features	Tiling on lower part of walls
Comments/Description	



**Plate 92: First Floor Room 2 Looking Southwest**

## 7.2 First Floor Room 3 Corridor

Current Function	Corridor
Original Function	Corridor
Phase	
Plan Form	Unaltered corridor
Door	Described individually below
Windows	Arched lantern
Fireplace	None
Historic Features	Tiling on lower part of walls, radiators
Comments/Description	



**Plate 93: First Floor Room 3 Looking Northeast**



**Plate 94: First Floor Room 3 Looking Southwest**



**Plate 95: First Floor Room 3 Southwest Door**



**Plate 96: Southwest staircase**

**First Floor Room 4 Staff Room**

Current Function	Staff Room
Original Function	Uncertain
Phase	
Plan Form	Considered to be unaltered
Door	Two-panelled 1920s door with round brass handles
Windows	Modern Powder Coated Aluminium
Fireplace	None
Historic Features	Skirting



**Plate 97: First Floor Room 4 Looking Northeast**



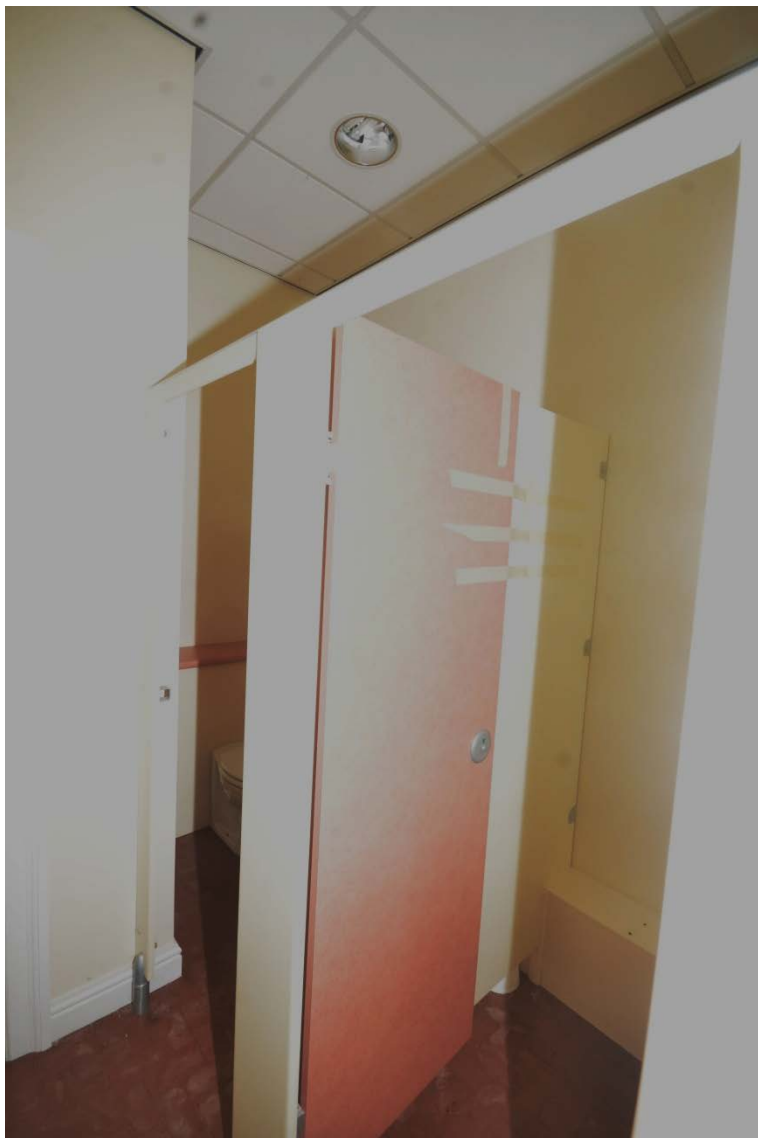
**Plate 98: First Floor Room 4 Looking Southwest**

### 7.3 First Floor Room 4a Toilets

Current Function	Toilets
Original Function	Toilets
Phase	
Plan Form	Altered - Modern cubicle partitions installed
Door	Two-panelled 1920s door with round brass handles
Windows	Modern Powder Coated Aluminium
Fireplace	None
Historic Features	Skirting
Comments/Description	



**Plate 99: First Floor Room 4a Looking Northeast**



**Plate 100: First Floor Room 4a Looking Northeast**



**Plate 101: First Floor Room 4a Looking Southeast**



#### 7.4 First Floor Room 5 Office

Current Function	Office
Original Function	?Finance Director's Office
Phase	
Plan Form	
Door	Two-panelled door with round brass handles, uncertain date
Windows	Modern Powder Coated Aluminium
Fireplace	None
Historic Features	Skirting
Comments/Description	



Plate 102: First Floor Room 5 Looking North



Plate 103: First Floor Room 5 Looking Southeast



**Plate 104: First Floor Room 5 Looking Southwest**



**Plate 105: First Floor Room 5 Looking Northwest**

### 7.5 First Floor Room 6 Strong Room

Current Function	Strong Room
Original Function	Strong Room
Phase	
Plan Form	Unaltered
Door	Strong room door by Whitfields Safe & Door Company of London, internal iron gate
Windows	None
Fireplace	None
Historic Features	Tiled walls
Comments/Description	



Plate 106: First Floor Room 6 Looking Northeast



**Plate 107: First Floor Room 6 Looking Southeast**



**Plate 108: First Floor Room 6 Looking Southwest**



**Plate 109: First Floor Room 6 Looking Northwest**

## 7.6 First Floor Room 7 Accounts

Current Function	Office
Original Function	Accounts Office
Phase	
Plan Form	Altered - formed from two previous rooms
Door	SW: Two-panelled 1920s door with round brass handles. NE: c. 1960s double doors, single full-height obscure glass in wooden frame
Windows	Modern Powder Coated Aluminium
Fireplace	None
Historic Features	Radiator
Comments/Description	



Plate 110: First Floor Room 7 Looking Northeast



**Plate 111: First Floor Room 7 Looking Southeast**



**Plate 112: First Floor Room 7 Looking Southwest**



**Plate 113: First Floor Room 7 Looking Northwest**



**Plate 114: Door to room 7**

**First Floor Room 8 Office**

Current Function	Office
Original Function	Office
Phase	
Plan Form	Possibly altered - SW and NE walls appear from plan form to be an addition
Door	Indeterminate date - two panelled door with brass handles
Windows	Modern Powder Coated Aluminium
Fireplace	None
Historic Features	Radiator
Comments/Description	



**Plate 115: First Floor Room 8 Looking Northeast**



**Plate 116: First Floor Room 8 Looking Southeast**





**Plate 117: First Floor Room 8 Looking Southwest**



**Plate 118: First Floor Room 8 Looking Northwest**

### 7.7 First Floor Room 9 Anteroom

Current Function	Anteroom
Original Function	Anteroom
Phase	
Plan Form	Possible recent addition
Door	Two-panelled 1920s door with round brass handles
Windows	None
Fireplace	None
Historic Features	None
Comments/Description	



**Plate 119: First Floor Room 9 Looking Southeast**



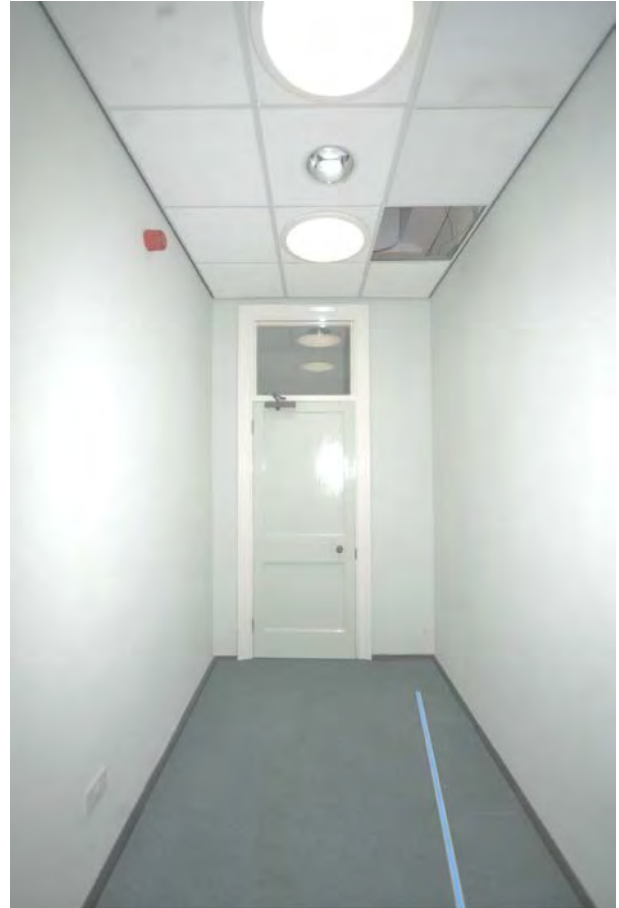
**Plate 120: First Floor Room 9 Looking Southwest**

### 7.8 First Floor Room 10 Anteroom

Current Function	Anteroom
Original Function	Anteroom
Phase	
Plan Form	Possible recent addition
Door	Two-panelled 1920s door with round brass handles
Windows	None
Fireplace	None
Historic Features	None
Comments/Description	



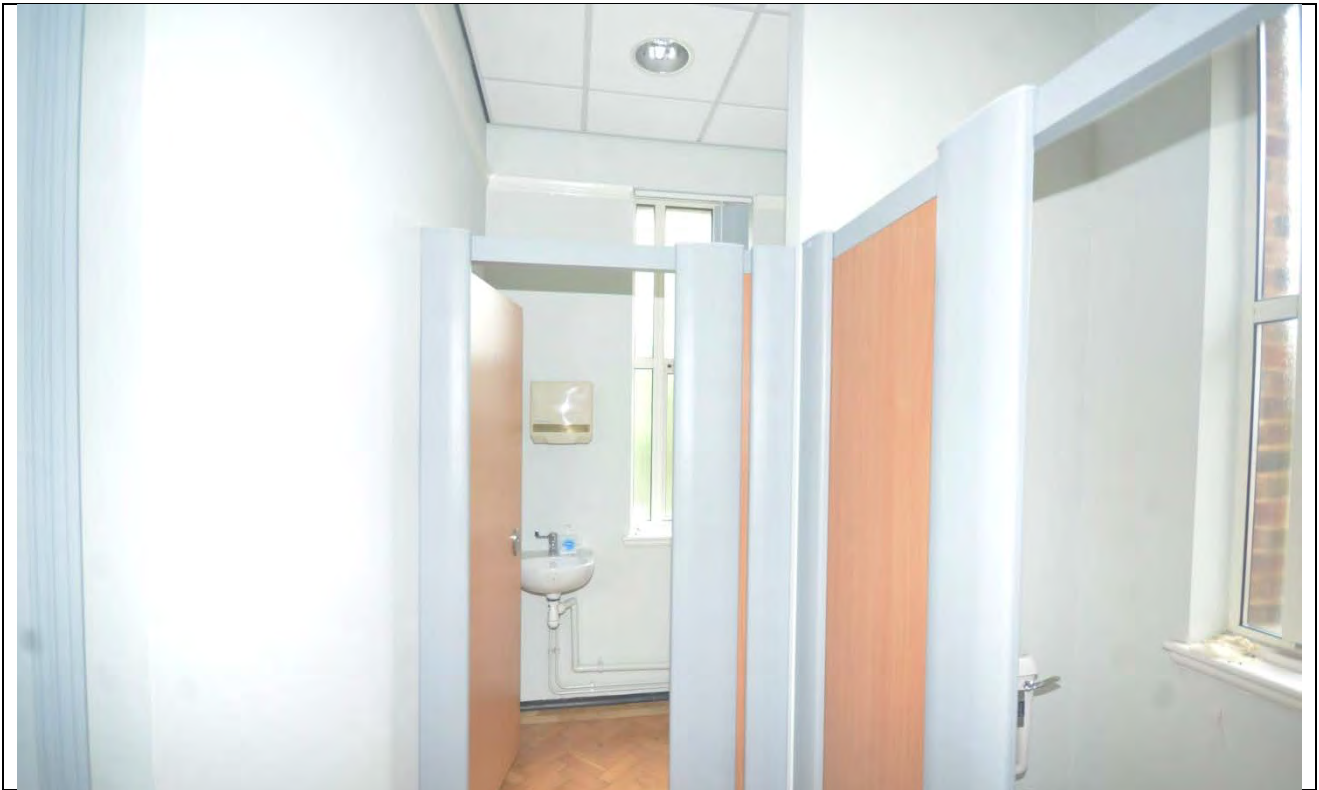
**Plate 121: First Floor Room 10 Looking Southeast**



**Plate 122: First Floor Room 10 Looking Northwest**

### 7.9 First Floor Room 11 Gents Toilet

Current Function	Gents Toilet
Original Function	Toilet
Phase	
Plan Form	Altered - Modern cubicle partitions installed
Door	Two-panelled 1920s door with round brass handles
Windows	Modern Powder Coated Aluminium
Fireplace	None
Historic Features	None
Comments/Description	



**Plate 123: First Floor Room 11 Looking Southeast**



**Plate 124: First Floor Room 11 Looking Southwest**



**Plate 125: First Floor Room 11 Looking Northwest**

### 7.10 First Floor Room 12 Stairs and Landing

Current Function	Stairs and Landing
Original Function	Stairs and Landing
Phase	
Plan Form	Altered - modern glazed partition installed around staircase (wired glass)
Door	Described individually below
Windows	Arched lantern
Fireplace	None
Historic Features	Timber closed-string staircase, tiled lower parts of walls
Comments/Description	



**Plate 126: First Floor Room 12 Looking Northeast**



**Plate 127: First Floor Room 12 Looking Southwest**



**Plate 128: Detail of staircase**



**7.11 First Floor Room 13 ?Staff room**

Current Function	?Staff room
Original Function	Board Room
Phase	
Plan Form	
Door	Two-panelled 1920s door with round brass handles
Windows	Lantern over, modern Powder Coated Aluminium to façade
Fireplace	Marble surround with bronze coloured insert, beneath substantial oak mantel
Historic Features	Skirting
Comments/Description	



**Plate 129: First Floor Room 13 Looking Northeast**



**Plate 130: First Floor Room 13 Looking Southeast**



**Plate 131: First Floor Room 13 Looking Southwest**



**Plate 132: First Floor Room 13 Looking Northwest**



**Plate 133: Detail of lantern**

### 7.12 First Floor Room 14 Ladies Toilet

Current Function	Ladies Toilet
Original Function	Toilet
Phase	
Plan Form	
Door	Two-panelled 1920s door with round brass handles
Windows	Obscure-glazed modern Powder Coated Aluminium
Fireplace	None
Historic Features	Skirting
Comments/Description	



Plate 134: First Floor Room 14 Looking Southeast



**Plate 135: First Floor Room 14 Looking Northwest**

### 7.13 First Floor Room 15

Current Function	Office
Original Function	?Assistant Director's
Phase	
Plan Form	Unaltered
Door	Two-panelled 1920s door with round brass handles
Windows	Modern Powder Coated Aluminium
Fireplace	Marble surround with tiled back and hearth. Bronze coloured insert and wooden mantel
Historic Features	Wood panelled dado
Comments/Description	



Plate 136: First Floor Room 15 Looking Northeast



**Plate 137: First Floor Room 15 Looking Southeast**



**Plate 138: First Floor Room 15 Looking Southwest**



**Plate 139: First Floor Room 15 Looking Northwest**



**Plate 140: Detail of fireplace**

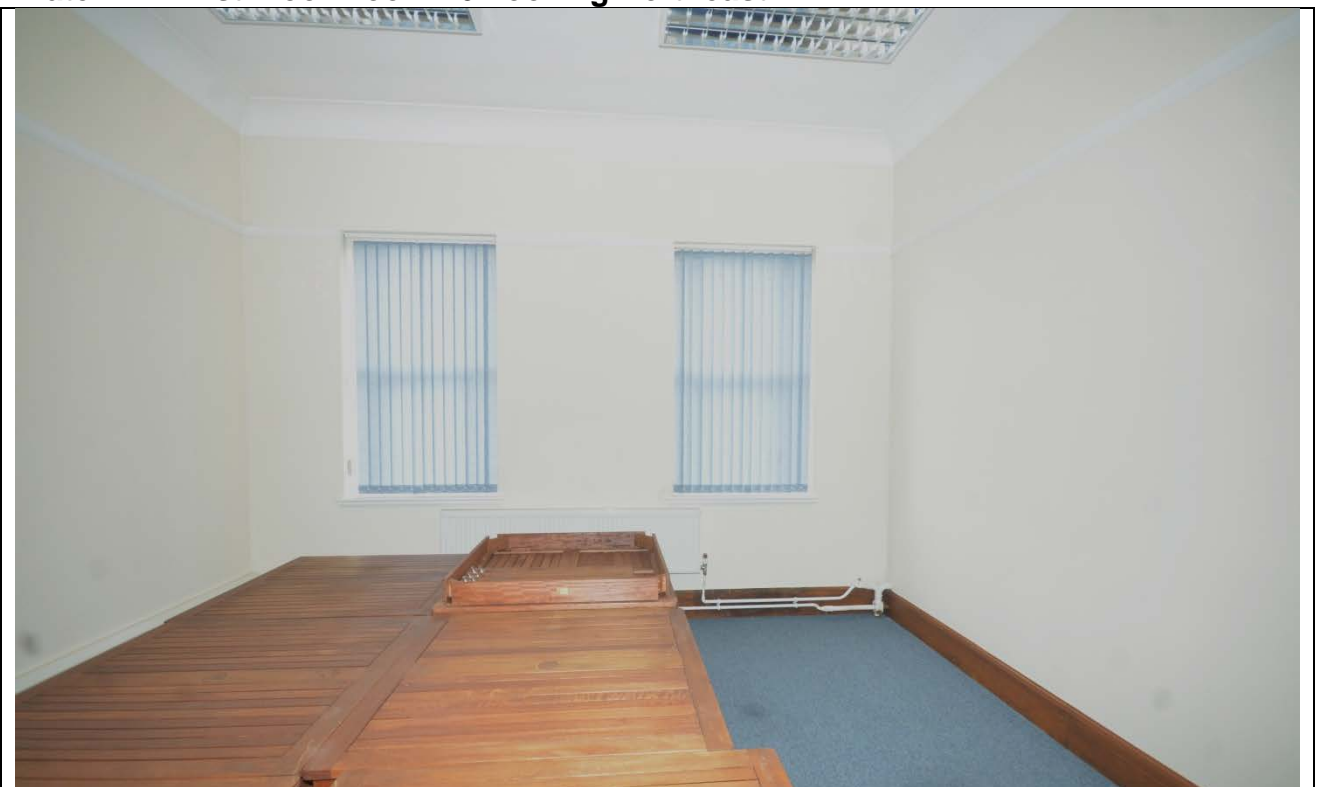


### 7.14 First Floor Room 16 Office

Current Function	Office
Original Function	Office
Phase	
Plan Form	Unaltered
Door	Two-panelled 1920s door with round brass handles
Windows	Modern Powder Coated Aluminium
Fireplace	None
Historic Features	Skirting, picture rail



Plate 141: First Floor Room 16 Looking Northeast



**Plate 142: First Floor Room 16 Looking Southeast**



**Plate 143: First Floor Room 16 Looking Southwest**



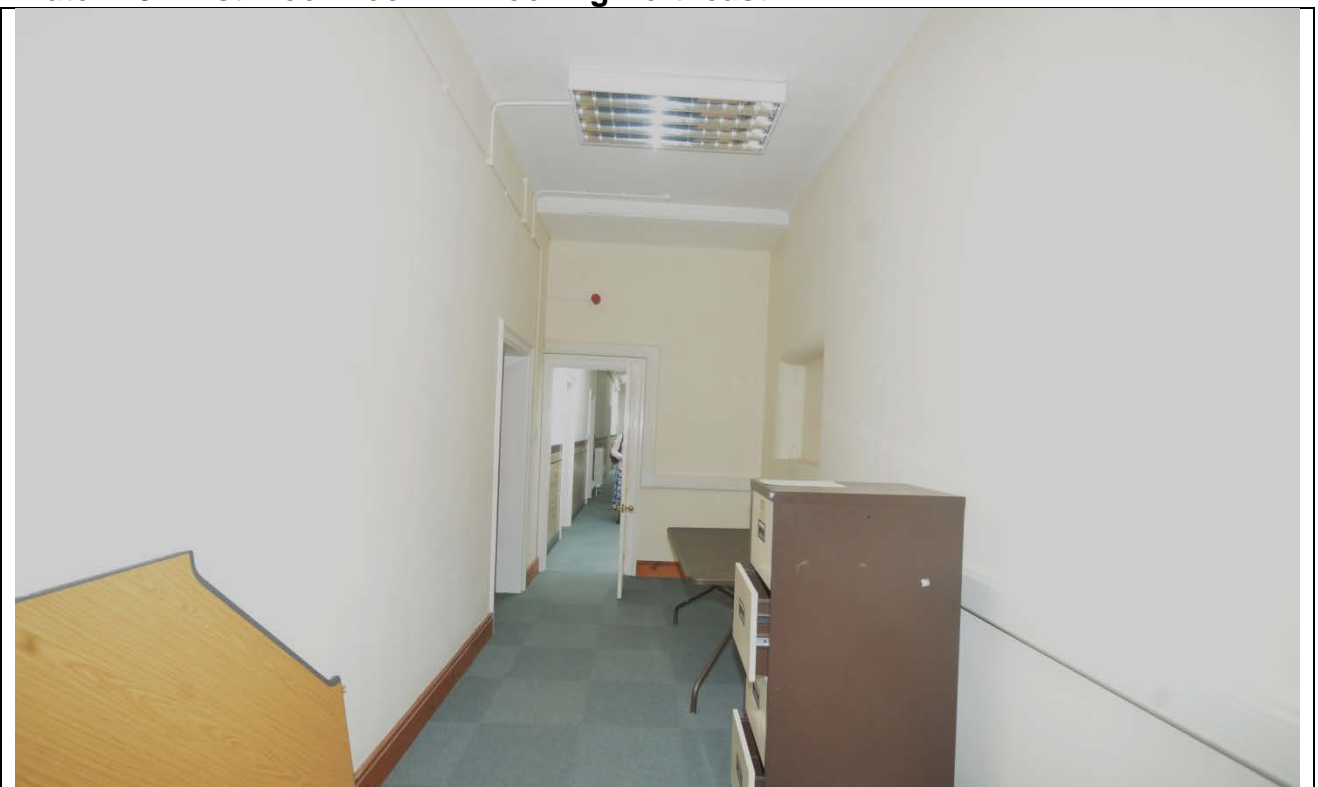
**Plate 144: First Floor Room 16 Looking Northwest**

### 7.15 First Floor Room 17 Office

Current Function	Office
Original Function	Office of Owner's Secretary
Phase	
Plan Form	Unaltered
Door	Two-panelled 1920s door with round brass handles
Windows	Modern Powder Coated Aluminium
Fireplace	
Historic Features	



Plate 145: First Floor Room 17 Looking Northeast



**Plate 146: First Floor Room 17 Looking Southwest**

### 7.16 First Floor Room 18 Office

Current Function	Office
Original Function	Owner's Office
Phase	
Plan Form	Unaltered
Door	Two-panelled 1920s door with round brass handles
Windows	Modern Powder Coated Aluminium
Fireplace	Marble hearth and fire surround with bronze coloured insert, wooden mantel
Historic Features	Oak panelling to walls, art deco lamps, parquet floor, oak pillars, curved bar counter in east corner, radiators
Comments/Description	



Plate 147: First Floor Room 18 Looking Northeast



**Plate 148: First Floor Room 18 Looking Southeast**



**Plate 149: First Floor Room 18 Looking Southwest**



**Plate 150: First Floor Room 18 Looking Northwest**



**Plate 151: 1930s view of Harry Vincent in the northeast part of room 18 (Blue Bird Album, Romsley & Hunnington His Soc)**



**Plate 152: Detail of fireplace**



**Plate 153: Detail of wall light**



**Plate 154: Detail of ceiling light**



## 8. Basement / Plant Room

A basement / plant room is present beneath the northeast end of the Administration Building. The room is accessed via a flight of steps.

Current Function Plant Room

Original Function Plant Room

Phase

Plan Form Unaltered

Door Planked lower with 3x3 obscure-glazed upper part

Windows 3x3 obscure-glazed fixed lights with some panes replaced for ventilation and service pipes

Fireplace None

Historic Features

Comments/Description The southeast part of the plant room is separated from the main part of the plant room by a brick bund. A large steel oil tank is present in this partition.



Plate 155: Plant Room Looking Northeast



Plate 156: Plant Room Looking Southeast





Plate 157: Plant Room Looking Southwest



Plate 158: Plant Room Looking Northwest

## 9. Door Catalogue

<b>Door Type</b>	Two panelled with round brass handles
<b>Door Date</b>	1920s
<b>Ground Floor Rooms</b>	3, 4, 5, 7, 8, 12, 14, 15
<b>First Floor Rooms</b>	4, 4a, 5, 7, 9, 10, 11, 13, 14, 15, 16, 17, 18
	

<b>Door Type</b>	Half obscure-glazed, panelled
<b>Door Date</b>	1920s
<b>Ground Floor Rooms</b>	1, 10
<b>First Floor Rooms</b>	
	

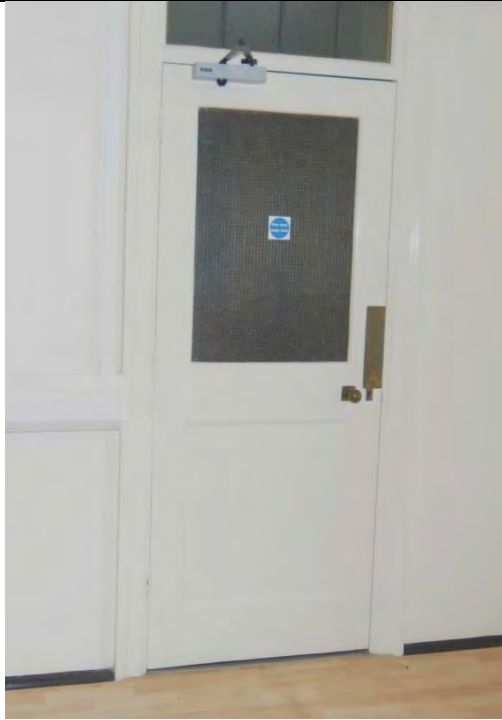
<b>Door Type</b>	Entrance doors - panelled lower with glazed upper, pierced panel over glazing
<b>Door Date</b>	1920s
<b>Ground Floor Rooms</b>	1
<b>First Floor Rooms</b>	



<b>Door Type</b>	Double door with single pane glazing to upper part of each door
<b>Door Date</b>	1920s
<b>Ground Floor Rooms</b>	14
<b>First Floor Rooms</b>	



<b>Door Type</b>	Obscure-glazed two-panelled with round brass handles
<b>Door Date</b>	1920s
<b>Ground Floor Rooms</b>	9
<b>First Floor Rooms</b>	



<b>Door Type</b>	Single panel lower, Wired glazed single pane upper
<b>Door Date</b>	1920s
<b>Ground Floor Rooms</b>	11, 12
<b>First Floor Rooms</b>	



<b>Door Type</b>	Strong room door by Whitfields Safe & Door Company of London, internal iron gate
<b>Door Date</b>	1920s
<b>Ground Floor Rooms</b>	
<b>First Floor Rooms</b>	6



<b>Door Type</b>	Double door with single full-height glazing
<b>Door Date</b>	c. 1960s
<b>Ground Floor Rooms</b>	
<b>First Floor Rooms</b>	7



<b>Door Type</b>	Two panelled, handle lower than other two-panelled doors
<b>Door Date</b>	Uncertain
<b>Ground Floor Rooms</b>	12
<b>First Floor Rooms</b>	



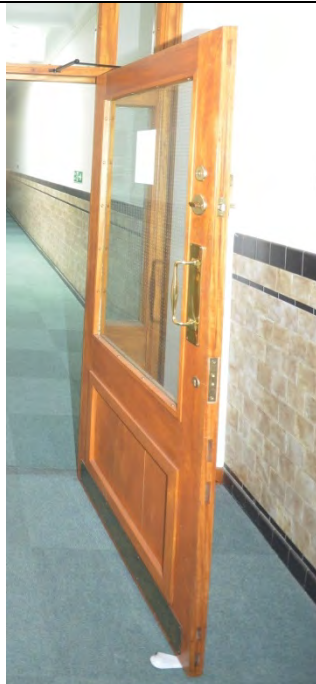
<b>Door Type</b>	Two panelled
<b>Door Date</b>	Uncertain
<b>Ground Floor Rooms</b>	
<b>First Floor Rooms</b>	8



<b>Door Type</b>	3x4 Glazed
<b>Door Date</b>	Uncertain
<b>Ground Floor Rooms</b>	
<b>First Floor Rooms</b>	1



<b>Door Type</b>	Two-panel with glazed upper
<b>Door Date</b>	Uncertain
<b>Ground Floor Rooms</b>	
<b>First Floor Rooms</b>	2

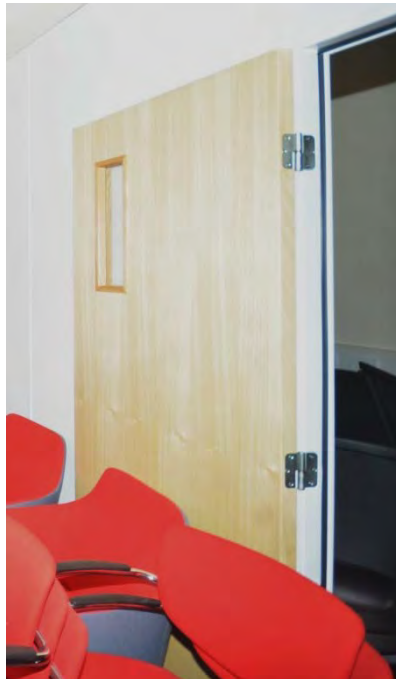




<b>Door Type</b>	Glass
<b>Door Date</b>	Recent
<b>Ground Floor Rooms</b>	1
<b>First Floor Rooms</b>	



<b>Door Type</b>	Modern
<b>Door Date</b>	Recent
<b>Ground Floor Rooms</b>	6
<b>First Floor Rooms</b>	



## 10. Original Features

### 10.1 Wall Finish

<b>Feature</b>	Marble cladding to walls
<b>Location</b>	Ground floor room 1



<b>Feature</b>	Wood panelled dado
<b>Location</b>	First floor room 15



<b>Feature</b>	Oak panelling
<b>Location</b>	First floor room 18



## 10.2 Staircase

<b>Feature</b>	Marble staircase with bronze balustrade
<b>Location</b>	Ground floor room 1, first floor room 1



### 10.3 Lighting

<b>Feature</b>	Stained glass Art Deco lampshades
<b>Location</b>	Ground floor room 1
	

<b>Feature</b>	Glass pendant light suspended on brass chains
<b>Location</b>	Ground floor room 10
	

<b>Feature</b>	Glass pendant lights suspended on brass chains
<b>Location</b>	First floor landing



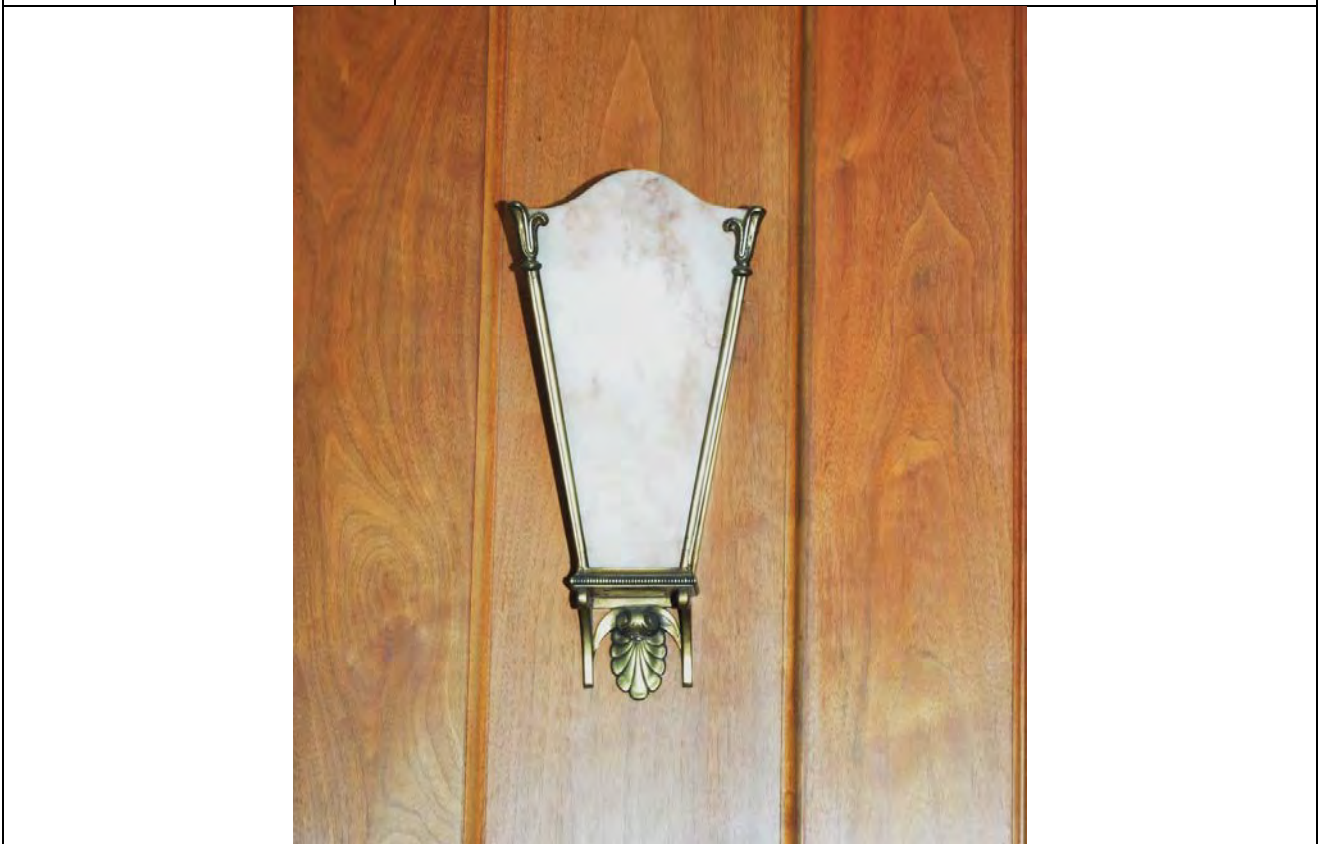
<b>Feature</b>	Stained glass Art Deco wall lights
<b>Location</b>	First floor landing



<b>Feature</b>	Glass pendant lamps supported on chains
<b>Location</b>	First floor room 18



<b>Feature</b>	Glass wall lamps with brass frames
<b>Date</b>	
<b>Location</b>	First floor room 18



10.4 Fireplaces

<b>Feature</b>	Fireplace
<b>Location</b>	Ground floor room 13



<b>Feature</b>	Marble fire surround with bronze coloured insert, beneath substantial oak mantel
<b>Location</b>	First floor room 13



<b>Feature</b>	Marble fire surround with tiled back and hearth. Bronze coloured insert and wooden mantel
<b>Location</b>	First floor room 15
	

<b>Feature</b>	Marble hearth and fire surround with bronze coloured insert, wooden mantel
<b>Location</b>	First floor room 18
	



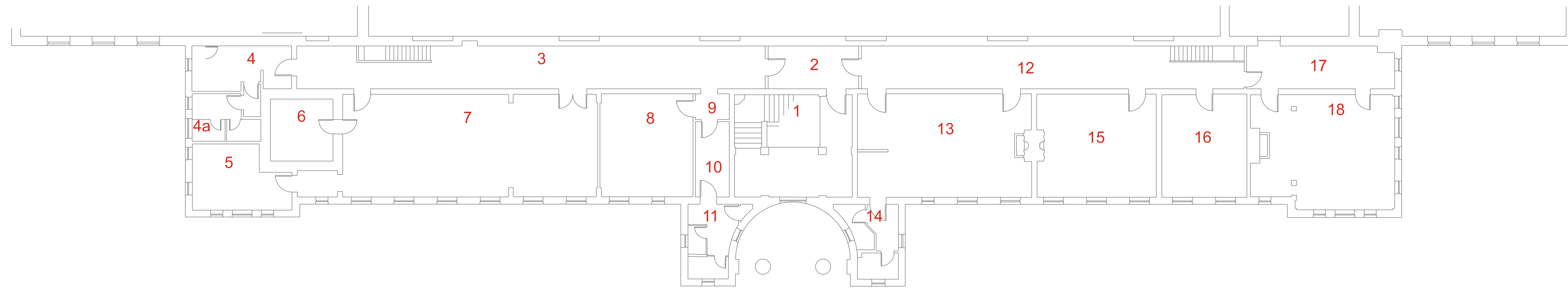
10.5 Other

<b>Feature</b>	'Chubb' safe
<b>Location</b>	Ground floor room 8

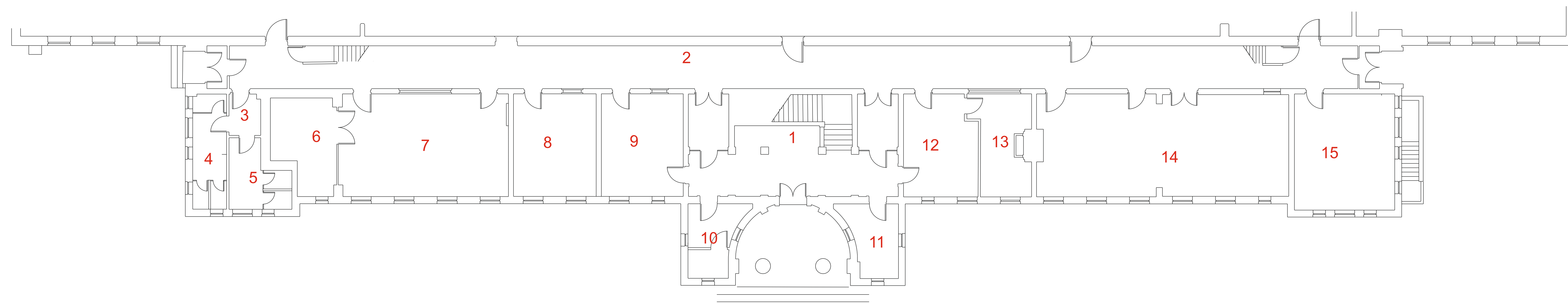


<b>Feature</b>	Curved bar counter
<b>Location</b>	First floor room 18





FIRST FLOOR



GROUND FLOOR

Blue Bird Park  
Administration Building Floor Plan



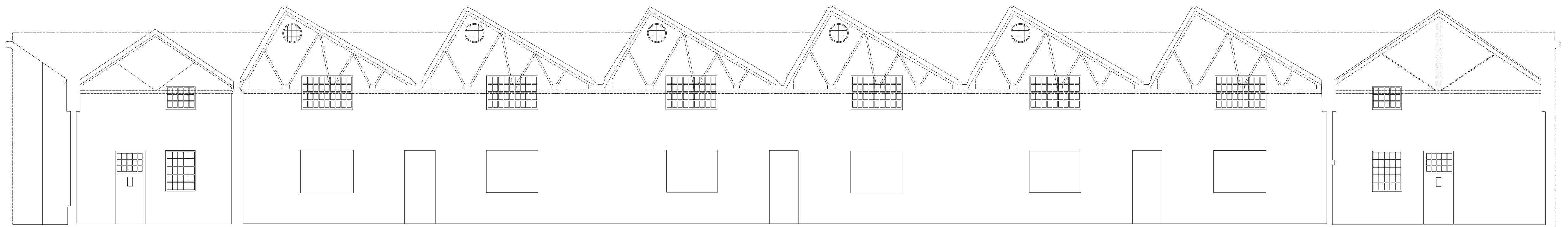
Scale @A0 1:100  
0 10m



Southwest



Southeast



Northwest



Northeast