

Appendix 2 Level 3 Building Recording of
The Canteen Building

Blue Bird Park
Bromsgrove Road
Hunnington
Worcestershire
B62 0JW

National Grid Reference: SO 96575 81388

Planning Reference Number: 19/00592/FUL

OASIS ID: thearcha1-516388

HER Event No. WSM80084

Listing Reference Number:1466995

Document Reference Number 2023/1681

Version 3.0

14/9/2023

Dr Peter Wardle & Colin Lacey

Table of Contents

| | |
|---|----|
| 1. Summary | 7 |
| 2. Introduction | 8 |
| 2.1 The Building | 8 |
| 2.2 The Client | 8 |
| 2.3 Copyright | 8 |
| 2.4 Location | 8 |
| 2.5 Date of Recording | 8 |
| 2.6 Circumstances of The Project | 8 |
| 2.7 Location of The Archive | 9 |
| 2.8 Methodology | 9 |
| 2.9 Reference Numbers | 9 |
| 3. Historic Context | 12 |
| 3.1 Documentary Evidence | 12 |
| 3.2 Historic Photographs | 13 |
| 3.2.1 Aerial | 13 |
| 3.2.2 General | 15 |
| 4. The Building | 16 |
| 4.1 The Building | 16 |
| 4.2 The Importance of the Building – Listing Criteria | 16 |
| 4.3 The Importance of the Building using Understanding Heritage – Values Conservation Principles Policies and Guidance 2008 | 18 |
| 4.4 Designations | 19 |
| 4.5 The Layout of The Building | 23 |
| 4.6 The Date of the Building | 24 |
| 4.7 The Construction Sequence | 24 |
| 5. Description: Exterior | 26 |
| 6. Description: Interior | 35 |
| 6.1 Room Functions | 35 |
| 6.2 Room 1 Entrance Hall | 37 |
| 6.3 Room 2 Entrance Porch | 40 |
| 6.4 Room 3 | 42 |
| 6.6 Room 4 | 44 |
| 6.7 Room 5 Dining Room | 46 |
| 6.8 Room 6 | 50 |
| 6.9 Room 7 Corridor | 52 |
| 6.10 Room 8 Lounge | 53 |
| 6.11 Room 9 Anteroom | 57 |
| 6.12 Room 10 Toilet | 58 |
| 6.13 Room 12 | 61 |

| | | |
|------|---|-----|
| 6.14 | Room 13..... | 63 |
| 6.15 | Room 14 Corridor..... | 65 |
| 6.16 | Room 15..... | 66 |
| 6.18 | Room 16 Entrance..... | 68 |
| 6.19 | Room 17..... | 70 |
| 6.20 | Room 18..... | 73 |
| 6.21 | Room 19 Toilets..... | 75 |
| 6.22 | Room 20..... | 77 |
| 6.23 | Room 21..... | 79 |
| 6.24 | Room 22..... | 81 |
| 6.26 | Part of Concert Hall..... | 84 |
| 6.27 | Room 24 Entrance Porch..... | 85 |
| 6.28 | Room 25 Toilets..... | 88 |
| 6.29 | Room 26 Toilet..... | 89 |
| 6.30 | Room 28 Entrance Porch..... | 97 |
| 6.31 | Room 29 Staircase..... | 99 |
| 6.32 | Room 30 Dressing Room..... | 100 |
| 6.33 | Room 31..... | 102 |
| 6.34 | Room 32 Stage..... | 103 |
| 6.35 | Room 33 Dressing Room..... | 105 |
| 6.36 | Room 34 Toilets and kitchen..... | 106 |
| 7. | Below Stage Area..... | 108 |
| 8. | Roof Space..... | 112 |
| 9. | Roof and Ceiling Structure Over Auditorium..... | 115 |
| 10. | Door Catalogue..... | 116 |
| 11. | Original Features..... | 120 |
| 12. | Wall Coverings..... | 121 |
| 13. | Vector Plans and Elevations..... | 122 |

Table of Figures

| | |
|---|-----|
| Figure 1: General Location Plan. Scale 1:10,000 | 10 |
| Figure 2: Detailed Location Plan. Scale 1:2000 | 11 |
| Figure 3: The layout of the Canteen building, 1:200 @ A3 | 23 |
| Figure 4: Area beneath stage, 1:200 @ A3 | 23 |
| Figure 5: Phase Plan Scale 1:200 | 25 |
| Figure 6: Suggested layout as built, 1:200 @ A3..... | 25 |
| Figure 7: Known / assumed original functions of rooms, | 36 |
| Figure 8: Northeast aspect, with space set up for a performance (c. 1930) (Blue Bird Album, Romsley & Hunnington History Society) | 90 |
| Figure 9: Profile of former concert hall, 1:50 @ A4 | 96 |
| Figure 10: Wall coverings, 1:200 @ A3 | 121 |
| Figure 11 Vector Floor Plan | 122 |
| Figure 12 Vector Elevations..... | 123 |

Table of Plates

| | |
|--|----|
| Plate 1: Staff in front of the canteen building, 1930s (Blue Bird Album, Romsley & Hunnington History Society) | 13 |
| Plate 2: Aerial view, 1936 (Britain from Above) The South East Elevation | 13 |
| Plate 3: Aerial view, 1936 (Britain from Above) The South East Elevation | 14 |
| Plate 4: Aerial view, 1948 (Britain from Above) The South East Elevation | 14 |
| Plate 5: Aerial view, 1948 (Britain from Above) The South East Elevation | 15 |
| Plate 6: The canteen under construction (Blue Bird Album, Romsley & Hunnington History Society)..... | 15 |
| Plate 7: The rear of the building..... | 21 |
| Plate 8: The front of the building | 21 |
| Plate 9: The front of the building | 22 |
| Plate 10: Front (southeast) elevation | 26 |
| Plate 11: 1930s view of front (southeast) elevation (Blue Bird Album, Romsley & Hunnington History Society) | 26 |
| Plate 12: Historic view of front (southeast) elevation, 1930s (Blue Bird Album, Romsley & Hunnington History Society)) | 27 |
| Plate 13: Detail of central bay | 27 |
| Plate 14: Detail of clock | 28 |
| Plate 15: Northeast elevation, northeast bay | 28 |
| Plate 16: View to southwest along northeast veranda | 29 |
| Plate 17: View to southwest along southwest veranda | 29 |
| Plate 18: Rear elevation..... | 30 |
| Plate 19: The main entrance, with dormers and roof light..... | 30 |
| Plate 20: Detail of cupola | 31 |
| Plate 21: Elevated view of rear elevation | 32 |
| Plate 22: Elevated view of rear elevation | 32 |
| Plate 23: Elevated view of rear elevation | 33 |
| Plate 24: Elevated view of rear elevation | 33 |
| Plate 25: Elevated view of rear elevation | 34 |
| Plate 26: Aerial image of the canteen building..... | 34 |
| Plate 27: Room 1 Looking Northeast | 37 |
| Plate 28: Room 1 Looking Southeast | 38 |
| Plate 29: Room 1 Looking Southwest | 38 |
| Plate 30: Room 1 Looking Northwest | 39 |
| Plate 31: Doors into room 2 from room 5 | 40 |
| Plate 32: Northwest aspect, room 2 | 41 |
| Plate 33: Northeast aspect, room 2 | 41 |

| | |
|--|----|
| Plate 34: Room 3 Looking Southeast | 42 |
| Plate 35: Room 3 Looking Northwest | 43 |
| Plate 36: Room 4 Looking Northeast | 44 |
| Plate 37: Room 4 Looking Southeast | 44 |
| Plate 38: Room 4 Looking Southwest | 45 |
| Plate 39: Room 4 Looking Northwest | 45 |
| Plate 40: Room 5 Looking Northeast | 46 |
| Plate 41: Room 5 Looking Southwest | 47 |
| Plate 42: Room 5 Looking Northwest | 47 |
| Plate 43: Detail of door, northwest elevation..... | 48 |
| Plate 44: Detail of serving windows | 48 |
| Plate 45: Obscure-glazed serving sash window | 49 |
| Plate 46: Detail of tiles | 49 |
| Plate 47: Room 6 Looking Northeast | 50 |
| Plate 48: Room 6 Looking Southeast | 50 |
| Plate 49: Room 6 Looking Southwest | 51 |
| Plate 50: Room 6 Looking Northwest | 51 |
| Plate 51: Room 7 Looking Northeast | 52 |
| Plate 52: Room 7 Looking Southwest | 52 |
| Plate 53: Room 8 Looking Northeast | 53 |
| Plate 54: Room 8 Looking Southeast | 54 |
| Plate 55: Room 8 Looking Southwest | 54 |
| Plate 56: Room 8 Looking Northwest | 55 |
| Plate 57: The board of directors in Room 8, c. 1930s (Blue Bird Album, Romsley & Hunnington History Society) | 55 |
| Plate 58: Parquet floor | 56 |
| Plate 59: Room 9 Looking Southeast | 57 |
| Plate 60: View into room 10 | 58 |
| Plate 61: Room 11 Looking Northeast | 59 |
| Plate 62: Room 11 Looking Southeast | 59 |
| Plate 63: Room 11 Looking Southwest | 60 |
| Plate 64: Room 11 Looking Northwest | 60 |
| Plate 65: Room 12 Looking Northeast | 61 |
| Plate 66: Room 12 Looking Southeast | 62 |
| Plate 67: Room 12 Looking Southwest | 62 |
| Plate 68: Room 12 Looking Northwest | 62 |
| Plate 69: Room 13 Looking Northeast | 63 |
| Plate 70: Room 13 Looking Southeast | 64 |
| Plate 71: Room 13 Looking Northwest | 64 |
| Plate 72: Room 14 Looking Southwest | 65 |
| Plate 73: Room 15 Looking Northeast | 66 |
| Plate 74: Room 15 Looking Southeast | 67 |
| Plate 75: Room 15 Looking Northwest | 67 |
| Plate 76: Room 16 Looking Southeast | 68 |
| Plate 77: Room 16 Looking Northwest | 68 |
| Plate 78: Historic view to northeast, prior to division of room 16, c. 1970s (Blue Bird Album, Romsley & Hunnington History Society) | 69 |
| Plate 79: Room 17 Looking Northeast | 70 |
| Plate 80: Room 17 Looking Southeast | 71 |
| Plate 81: Room 17 Looking Southwest | 72 |
| Plate 82: Room 17 Looking Northwest | 72 |
| Plate 83: Detail of wooden floor | 72 |
| Plate 84: Northeast aspect, room 18 | 73 |
| Plate 85: Southeast aspect, room 18 | 73 |

| | |
|--|-----|
| Plate 86: Southwest aspect, room 18 | 74 |
| Plate 87: Northwest aspect, room 18 | 74 |
| Plate 88: Room 19 Looking Northeast | 75 |
| Plate 89: Room 19 Looking Southeast | 75 |
| Plate 90: Room 19 Looking Southwest | 76 |
| Plate 91: Room 19 Looking Northwest | 76 |
| Plate 92: Room 20 Looking Southeast, showing blocked door and window | 77 |
| Plate 93: Room 20 Looking Northwest | 78 |
| Plate 94: Room 21 Looking Southeast | 79 |
| Plate 95: Room 21 Looking Southwest | 80 |
| Plate 96: Ladder to roof space | 80 |
| Plate 97: Room 22 Looking Northeast | 81 |
| Plate 98: Room 22 Looking Southeast | 82 |
| Plate 99: Room 22 Looking Southwest | 82 |
| Plate 100: Room 22 Looking Northwest | 82 |
| Plate 101: Room 22 Looking Northwest (1930s) (Blue Bird Album, Romsley & Hunnington History Society) | 83 |
| Plate 102: Room 23 Looking Southeast | 84 |
| Plate 103: Room 23 Looking Northwest | 85 |
| Plate 104: Northeast aspect, room 24 | 85 |
| Plate 105: Southeast aspect, Room 24 | 86 |
| Plate 106: Southwest aspect, Room 24 | 86 |
| Plate 107: Northwest aspect, room 24 | 87 |
| Plate 108: Room 25 Looking Southeast | 88 |
| Plate 109: Room 25 Looking Northwest | 88 |
| Plate 110: Room 26 looking Northeast Room 27 Office | 89 |
| Plate 111: Room 27 Looking Northeast | 90 |
| Plate 112: Room 27 Looking Northeast | 91 |
| Plate 113: 1930s image, Room 27 Looking Northeast (Blue Bird Album, Romsley & Hunnington History Society) | 91 |
| Plate 114: Room 27 Looking Southeast (central part) | 92 |
| Plate 115: Room 27 Looking Southeast (western part) | 92 |
| Plate 116: Room 27 Looking Southwest | 93 |
| Plate 117: Historic Image: Room 27 Looking Southwest (c. 1930) (Blue Bird Album, Romsley & Hunnington History Society) | 93 |
| Plate 118: Historic Image: Room 27 Looking Southwest (c. 1930) (Blue Bird Album, Romsley & Hunnington History Society) | 94 |
| Plate 119: Room 27 Looking Northwest | 94 |
| Plate 120: Small partitioned entrance lobby, eastern corner of room 27 | 95 |
| Plate 121: Room 28 Looking Northeast | 97 |
| Plate 122: Room 28 Looking Southeast | 97 |
| Plate 123: Room 28 Looking Southwest | 98 |
| Plate 124: Room 28 Looking Northwest | 98 |
| Plate 125: Room 29 Looking Southeast | 99 |
| Plate 126: Room 29 Looking Southwest | 99 |
| Plate 127: Room 30 Looking Northeast | 100 |
| Plate 128: Room 30 Looking Southeast | 101 |
| Plate 129: Room 30 Looking Southwest | 101 |
| Plate 130: Room 31 Looking Northeast | 102 |
| Plate 131: Room 32 Looking Northeast | 103 |
| Plate 132: Room 32 Looking Southeast | 103 |
| Plate 133: Room 32 Looking Northwest | 104 |
| Plate 134: Room 33 Looking Northeast | 105 |
| Plate 135: Room 33 Looking Southwest | 105 |

| | |
|--|-----|
| Plate 136: Room 34 Looking Northeast | 106 |
| Plate 137: Detail of lavatory | 106 |
| Plate 138: Room 34 Looking Southeast | 107 |
| Plate 139: Room 34 Looking Northwest..... | 107 |
| Plate 140: Entrance from room 27 | 108 |
| Plate 141: Bay 1 looking northeast | 109 |
| Plate 142: Bay 2 looking northeast | 109 |
| Plate 143: Bay 3 looking northeast | 110 |
| Plate 144: Bay 4 looking northeast | 110 |
| Plate 145: Bay 5 looking northeast | 111 |
| Plate 146: West corner, bay 5..... | 111 |
| Plate 147: Northwest aspect, roof space, showing rendered beams | 112 |
| Plate 148: Southeast aspect, roof space showing brick wall..... | 113 |
| Plate 149: Cable distribution | 113 |
| Plate 150: Roof space showing window openings | 114 |
| Plate 151: Detail of window..... | 114 |
| Plate 152: Detail of straight concrete arched beams over main auditorium | 115 |
| Plate 153: Detail of bracing formed by arched concrete beams, southwest of main auditorium | 115 |

Version Control

| Version No | Draft | Content Added/Omitted | Date |
|------------|---------------|-----------------------|---------|
| 0.5 | Client Draft | | 28/4/23 |
| 0.7 | LPA Draft | Client Comments | |
| 1 | Issued Report | Oasis Ref | 9/6/23 |
| 2 | Issued Report | LPA Comments, HER ref | 20/6/23 |
| 3 | Issued Report | Historic Photos | 14/9/23 |
| | | | |

Building Recording of: Canteen Building Dr Peter Wardle & Colin Lacey

1. Summary

The building is a former canteen and assembly rooms for the Blue Bird toffee factory, built as a "multi-purpose canteen and concert hall building with large stage, billiards and card rooms, library and many other amenities". The building has latterly been used as offices.

It is currently being converted into flats:

| | |
|---------------------|--|
| Current Function | Disused Factory Canteen . |
| Original Function | Factory Canteen |
| Period | Modern |
| Century | 20th |
| Precise Date | 1925-7 |
| Architectural Style | Neo-Georgian |
| Architect | S N Cooke FRIBA |
| Materials | Brick, concrete |
| Designation | Listed Grade II |
| Conservation Area | not located within a conservation area |

The following phases of construction are present:

| Phase | Period | Date | Description | How Dated |
|-------|--------|-----------|--|---------------------------------------|
| 1 | Modern | 1925-7 | Main structure of building | Listing description, historic mapping |
| 2 | Modern | | Insertion of partition at rear of auditorium | Plan form |
| 3 | Modern | Post 1998 | Office partitions in auditorium, enclosure of stage area, subdivisions at SW end | Plan form, historic photographs |

2. Introduction

2.1 The Building

The building is a former canteen and assembly rooms for the Blue Bird toffee factory, built as a "multi-purpose canteen and concert hall building with large stage, billiards and card rooms, library and many other amenities". The building has latterly been used as offices.

2.2 The Client

This report was commissioned by Jon Richards of Seven Capital (Halesowen) Ltd. and subsequently Malvern Estates Ltd.

2.3 Copyright

The copyright of this report belongs to the Historic Environment Consultancy. No liability to third parties is accepted for advice and statements made in this report.

2.4 Location

| | |
|------------------------|--|
| Site Address: | Canteen Blue Bird Park Bromsgrove Road Hunnington Worcestershire |
| Post Code: | B62 0JW |
| Grid Reference: | SO 96575 81388 |
| National Co-ordinates | 396575 281388 |
| Latitude and Longitude | 52.430461 -2.0518002 |

The general location is shown in Figure 1 and the detailed location in Figure 2.

2.5 Date of Recording

The building was initially visited by Dr Peter Wardle in July & October 2019. Subsequent visits were made by Dr Wardle and Colin Lacey between this point and September 2022.

2.6 Circumstances of The Project

The recording of the building was required as a condition of a grant of planning permission and listed building consent reference Bromsgrove Borough Council 19/00592/FUL for:

“Part demolition and site clearance of the former Blue Bird factory site for its redevelopment to provide 116 residential dwellings (Use Class C3), consisting of both new dwellings and conversion of the Welfare and Administration buildings, along with associated landscaping; drainage; engineering; highways and access works”.

The wording of the planning condition is as follows:

No development shall commence until a programme of research and building recording including a Written Scheme of Investigation(s), has been submitted to and approved by the local planning authority in writing. The scheme shall include an assessment of significance and research questions; and:

a) The programme and methodology of site investigation and recording which will include:
1. A Level 3 historic building recording (as defined by Historic England) on all pre 1980s buildings. This will include documentary research.

2. A Level 1 historic building recording (as defined by Historic England) on warehouses, dating to the 1980s.

3. Investigative works prior to and during construction works to recover structural information.

b) The programme for post investigation assessment.

c) Provision to be made for analysis of the site investigation and recording.

d) Provision to be made for publication and dissemination of the analysis and records of the site investigation

e) Provision to be made for archive deposition of the analysis and records of the site investigation

f) Nomination of a competent person or persons/organisation to undertake the works set out within the Written Scheme of Investigation.

REASON: In accordance with the requirements of paragraph 194 of the National Planning Policy Framework.

2.7 Location of The Archive

The archive of this project consists solely in the form of digital records. This report contains 667 high resolution photographs and 40 plans and elevations. The drawings are appended to the report as layered vector files. Copies of this report in pdf format therefore represents the archive.

Copies of this archive are therefore given to the Archaeology Data Service and Worcestershire County Council Historic Environment Record.

2.8 Methodology

The building was recorded according to the requirements set out in the English Heritage 2016 *Understanding Historic Buildings A Guide to Recording Practice* and the method statement.

There were no difficulties experienced in the recording process.

2.9 Reference Numbers

Planning Reference Number: 19/00592/FUL

OASIS ID: thearcha1-516388

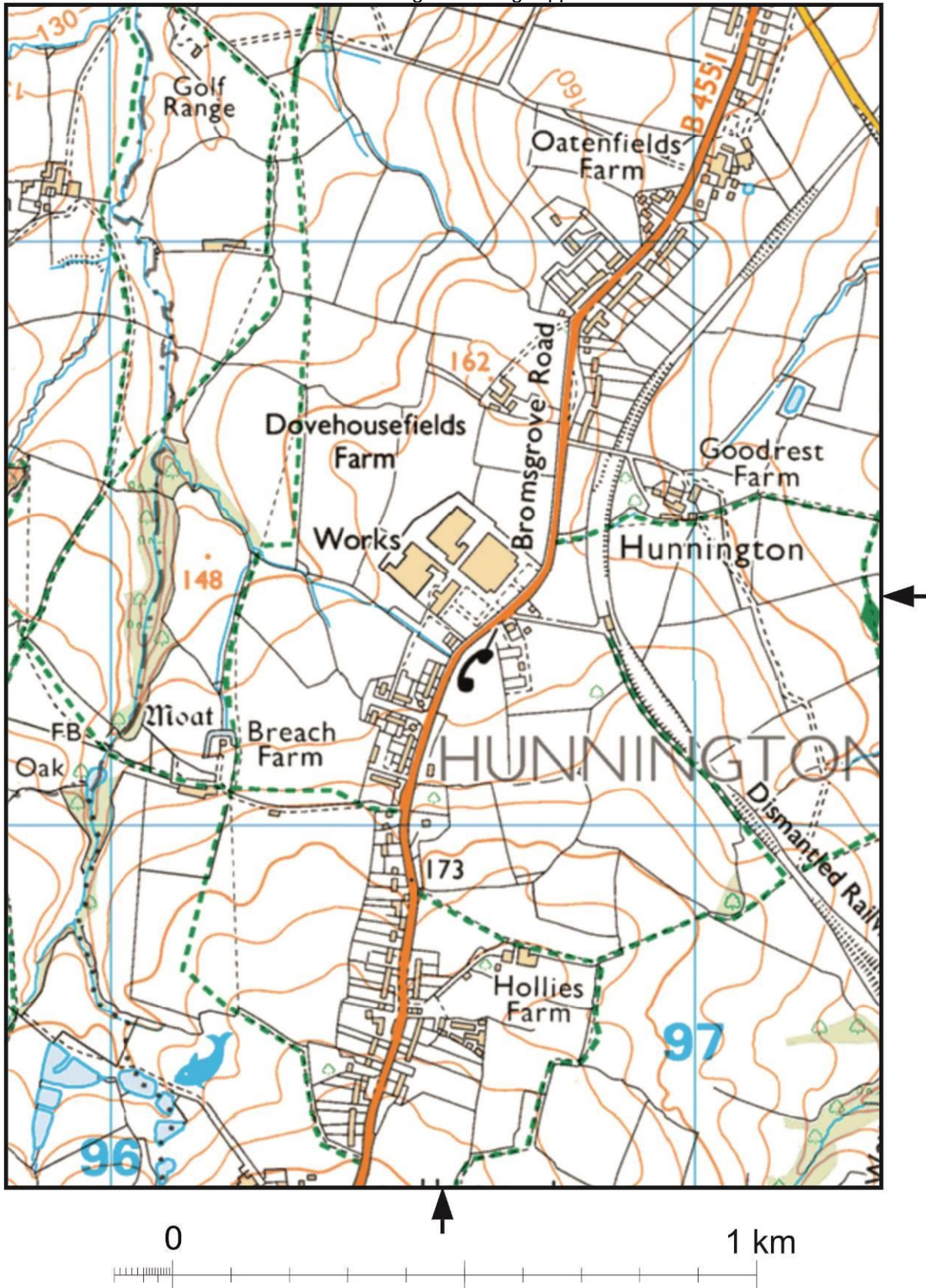
HER Event No. WSM80084

Listing Reference Numbers:

1464601 (Administration Building)

1466995 (Canteen)

1466996 (Walls, Railings and Gates)



Metres 1:10,000 @ A4

Figure 1: General Location Plan. Scale 1:10,000



Figure 2: Detailed Location Plan. Scale 1:2000

3. Historic Context

3.1 Documentary Evidence

An article was published in *The Midlander* in February 1927. The article details the background behind the Blue Bird factory and the village of Hunnington describing the history of the Messrs Harry Vincent Ltd and Harry Vincent, himself.

The article describes the canteen building as follows:

Rest Rooms, change rooms, first aid rooms etc. indicate the consideration devoted to the welfare and comfort of the workpeople, who will number approximately 1,000 when the works are in full commission. A theatre and large Canteen is available for amateur theatricals, dancing and other social recreations. From a verandah along the main front of the canteen building, which is 212ft. long, employees may sit between their labours and enjoy the beauty of the rural scenery. On the opposite side of the road, land has been allotted for playing fields and recreation grounds.

A newspaper article from the *Birmingham Gazette*, published on the 13th May 1930 describes the canteen building as follows:

It is characteristic of Mr. Vincent that he has equipped the estate in which his works and garden village stand with a very beautifully designed building, which serves the dual purposes of a canteen for the workers and a concert hall and club for the people of Hunnington. This building has a large stage, billiards and card rooms, a library and many other amenities.

In addition the estate includes spacious sports grounds. With two hard tennis courts. There is a welfare department with delightful rest rooms.

3.2 Historic Photographs



Plate 1: Staff in front of the canteen building, 1930s (Blue Bird Album, Romsley & Hunnington History Society)

3.2.1 Aerial

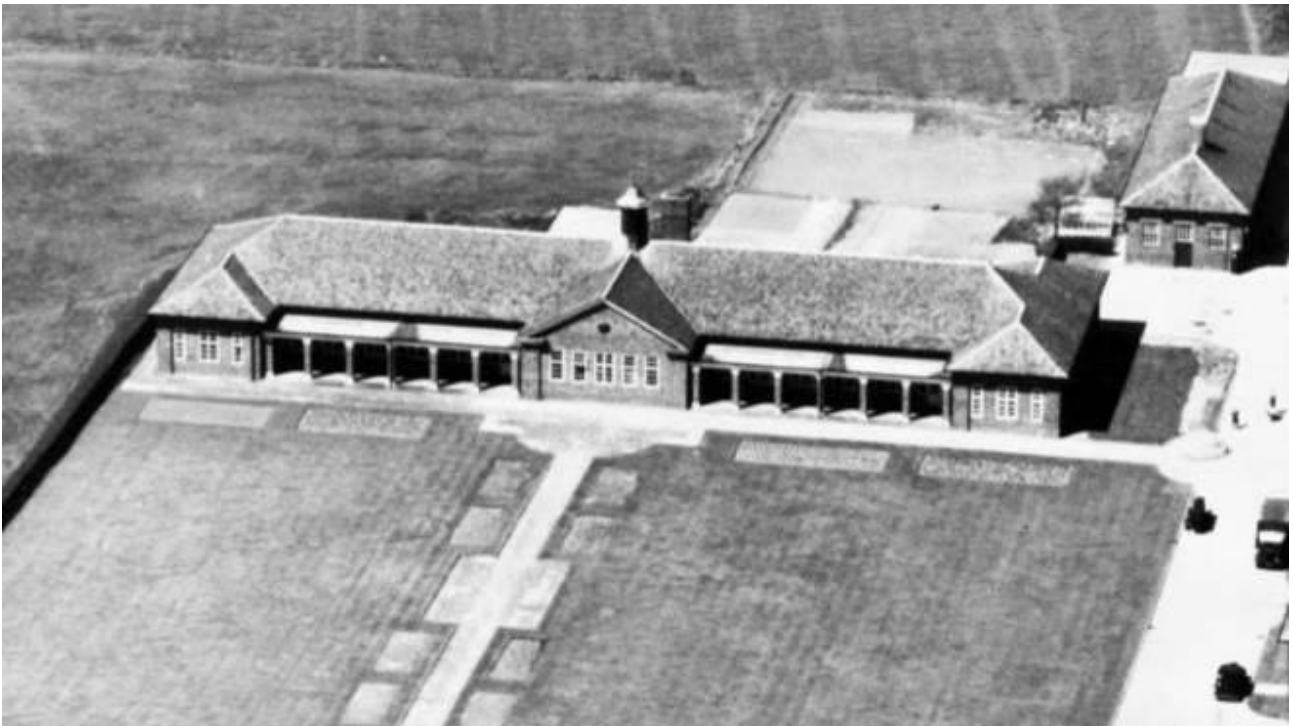


Plate 2: Aerial view, 1936 (Britain from Above) The South East Elevation



Plate 3: Aerial view, 1936 (Britain from Above) The South East Elevation



Plate 4: Aerial view, 1948 (Britain from Above) The South East Elevation



Plate 5: Aerial view, 1948 (Britain from Above) The South East Elevation

3.2.2 General



Plate 6: The canteen under construction (Blue Bird Album, Romsley & Hunnington History Society)

4. The Building

4.1 The Building

Canteen and assembly rooms for the Blue Bird toffee factory, built as "multi-purpose canteen and concert hall building (the Canteen building) with "large stage, billiards and card rooms, library and many other amenities".

| | |
|---------------------|--|
| Current Function | Disused Factory Canteen . |
| Original Function | Factory Canteen |
| Period | Modern |
| Century | 20th |
| Precise Date | 1925-7 |
| Architectural Style | Neo-Georgian |
| Architect | S N Cooke FRIBA |
| Materials | Brick, concrete |
| Designation | Listed Grade II |
| Conservation Area | not located within a conservation area |

4.2 The Importance of the Building – Listing Criteria

| | | |
|-----------------------------|--------------------------|--|
| Date | | For modern buildings one of the other criteria has to be clearly met. |
| Rarity of Building Type | | The combination of a canteen with recreational facilities is considered unusual. It is suggested that there are no published studies to establish this |
| Work of prominent Architect | | The building was designed by a prominent, Birmingham architect. |
| Architectural Interest | | |
| | Architectural Style | The style is functional. |
| | Architectural Design | The design of the building is assured and well realised. It provides a familiar sense of traditional community architecture in a factory setting. It combines adaptable spaces with good quality construction and materials; as a purpose-built structure for combined social and welfare activities on a factory site it is an uncommon survival; the concrete-ribbed roof structure above the former concert hall proved an effective and unusual technological achievement for this period; it retains high quality fittings and fixtures throughout, including tiled corridors and lobby spaces, and timber fenestration to internal spaces. Architectural Interest is noted by Historic England as a principal reason of designation. |
| | Decoration | This building is not decorated so this is not a factor in determining if this building is worthy of listing. |
| | Craftsmanship/Virtuosity | The building demonstrates a high standard of craftsmanship. |
| | Innovation | The concrete-ribbed roof structure above the former concert hall proved an effective and unusual technological achievement for this period. |
| | Significant Plan Form | The plan form is not particularly significant. |
| Historic Interest | | Historic Interest is noted as a principal reason for designation - he factory and Hunnington Model Village was developed in the spirit of the period: sited in a |

Blue Bird Park Building Recording: Appendix 2 Canteen

| | | |
|--------------------------------|-----------------|--|
| | | clean, rural location with good modern transport links and with improved standards of welfare and wellbeing; * as a regionally significant element of the continuation of model village development, begun nearby at Bournville in the late C19; * the wealth of facilities once provided in the Welfare Building demonstrate the progressive attitude that underlies the development of the site. |
| Group Value | | There is group value with the other contemporary factory buildings. |
| Other Factors | | |
| | Aesthetic Merit | The building is aesthetically pleasing to the southeast however is .functional to the rear. |
| Example of Regional Specialism | | The building is not an example of a regional industrial specialism. |
| Contribution of Setting | | The industrial setting does contribute to the setting of this building, highlighting its original purpose. |

4.3 The Importance of the Building using Understanding Heritage – Values Conservation Principles Policies and Guidance 2008

| | | |
|-------------------------|------------|--|
| Date | | For modern buildings one of the other criteria has to be clearly met. |
| Rarity | | The combination of a canteen with recreational facilities is considered unusual. It is suggested that there are no published studies to establish this |
| Architectural Interest | | |
| | Architect | The building was designed by a prominent, Birmingham architect. |
| | Innovation | The concrete-ribbed roof structure above the former auditorium may be an unusual technological achievement for this period. |
| | Virtuosity | The building demonstrates a fair standard of craftsmanship. |
| | Plan Form | The plan form is not significant and altered. |
| Historic Interest | | This building does not illustrate important aspects of the nation's history. It is not associated with a Nationally Important person. |
| Group Value | | There is group value with the other contemporary factory buildings. |
| Contribution of Setting | | The setting of the building makes no difference to the reason for listing. |

Understanding Heritage – Values Conservation Principles Policies and Guidance 2008

| | | |
|------------|---------------------------|---|
| Evidential | | The building dates from a period when the physical evidence of the building adds little novel information. |
| Historical | | |
| | Illustrative | Low The building does not illustrate an unusual historic connection. |
| | Association | Fair The building is associated with Harry Vincent, a locally known businessman and manufacturer of nationally known brands of confectionery |
| Aesthetic | | |
| | Design | Design is a factor in the special interest of this building. |
| | Detailing & Craftsmanship | The building demonstrates a good standard of craftsmanship but is not exceptional. |
| | Architect | The building was not designed by a prominent architect. The architect is however well known in Birmingham. |
| | Innovation | The concrete-ribbed roof structure above the former auditorium is an unusual technological achievement for this period. |
| Communal | | The building has been used by large numbers of people so there is a social value. Most Britons above a certain age have eaten a Blue Bird toffee or a Woolworths pick and mix |

4.4 Designations

The building is a Grade II listed building and the listed building description is as follows:

Summary of Building

The Welfare Building to the factory designed by S N Cooke and built in 1925-7 for Harry Vincent Limited of Birmingham, manufacturers of Blue Bird toffee.

Reasons for Designation

The former Welfare Building at Blue Bird Toffee Factory (Harry Vincent Limited), Hunnington, Worcestershire, is listed at Grade II for the following principal reasons:

Architectural Interest:

- the design by prominent Birmingham architect SN Cooke is assured and well-realised, and provides a familiar sense of traditional community architecture in a factory setting. It combines adaptable spaces with good quality construction and materials;*
- as a purpose-built structure for combined social and welfare activities on a factory site it is an uncommon survival;*
- the concrete-ribbed roof structure above the former concert hall proved an effective and unusual technological achievement for this period;*
- it retains high quality fittings and fixtures throughout, including tiled corridors and lobby spaces, and timber fenestration to internal spaces.*

Historic Interest:

- the factory and Hunnington Model Village was developed in the spirit of the period: sited in a clean, rural location with good modern transport links and with improved standards of welfare and well being;*
- as a regionally significant element of the continuation of model village development, begun nearby at Bournville in the late C19;*
- the wealth of facilities once provided in the Welfare Building demonstrate the progressive attitude that underlies the development of the site.*

Group Value:

- with the adjacent former Administration Building (listed at Grade II) it forms a legible grouping of the administrative and social focal points of a notable interwar factory at the centre of a new model village;*
- the front boundary treatment (listed at Grade II) provides a distinctive and contemporary setting to the building and to the factory site as a whole.*

History

The factory was designed and built in 1925-7 for Harry Vincent Limited of Birmingham, manufacturers of Blue Bird toffee. The factory scheme was by S N Cooke F.R.I.B.A., of Birmingham, and included a model village (24 of the planned 100 houses were built) village shop with post office, cricket pavilion and other leisure buildings. The modern and hygienic factory design was noted in the Birmingham Gazette in May 1920, as part of an article tracing the swift rise to prominence of manufacturer Harry Vincent. It also remarks on the generous facilities provided for the workers and villagers including a multi-purpose canteen and concert hall building (the Welfare Building) with "large stage, billiards and card rooms, library and many other amenities."

The Welfare Building is shown as part of the factory on the Ordnance Survey Map of Worcestershire of 1938 (Epoch 4), with the Administration Building (listed at Grade II) to the north east and two warehouse buildings to the west. By 1969 a further warehouse was erected to the rear of the Welfare Building. In the later C20 some alterations and adaptations were made to the Welfare Building.

At the end of the C20 the factory ceased operation and parts of the site have served other uses since that time. In 2019 the buildings were subject to proposals for redevelopment.

Details

Former factory canteen and assembly rooms of 1925-7 constructed to the designs of S N Cooke for Harry Vincent Limited.

MATERIALS: constructed of red brick, with stone dressings. The north end has a concrete arched-beam roof. The roof is covered in slate and concrete tiles. The interior has glazed tiling to corridors, lobbies and bathrooms, and early-C20 joinery throughout including casements and doors with metal fittings. There are floorboards to the corridors and wood-block to the formal room at the north end. The open arcades to the front have stone-flagged floors.

PLAN: it is constructed on a north-east/ south-west orientation and is of single-storey with a mezzanine level at the north-east end, which is a former stage that has been partitioned from the main hall.

EXTERIOR: the building is set well back from the road behind a lawn. The principal elevation has a central gable with a clock to an open pediment and open arcades to each side under a deep pitched roof with central bell turret. At each end are cross wings with hipped roofs. The elevations have brick pilasters and openings with brick heads and timber casements and doors. The rear elevation has four entrance lobbies of differing plans, and that to the main entrance incorporates washrooms. The left roof slope has seven dormers under pyramidal roofs.

INTERIOR: the main lobby with tiled washrooms to each side leads into the principal arch-braced room (former concert hall) in the north half of the building. This has blank arches to each end and the lower sections of the walls and window ledges are covered in glazed tiles. The arch to the north wall is above the enclosed opening to the stage and has lower-level fitted cupboards that give access to a basement storage area below. Above is a mezzanine level at the north end of the building, formerly the stage. The mezzanine level is accessed via tiled lobbies and stairs to each corner. The former concert hall has late-C20 partitioning forming office and lobby spaces. The southern end of the room has been enclosed and there is further office partitioning of late-C20 towards the central section of the building. The southern half of the building has various rooms and spaces, in part created with glazed partitions. The doors, other joinery and tiling to corridors are all of 1920s date. At the south end of the building is a formal room with picture rails.

Books and journals

Pevsner, N, Brooks, A, The Buildings of England: Worcestershire, (2007), 581

Websites

Romsley & Hunnington History Society: An Industrial Romance, The Midlander, February 1927, accessed 10/07/2019 from <https://www.rhhs.org.uk/local-history/bluebird.html>

Other

'Messrs Harry Vincent's Model Factory and Garden Village.', *The Retail Confectioner*,
January 1927, 13-17

One of the largest toffee makers in the world, *Birmingham Gazette*, 13 May 1930



Plate 7: The rear of the building



Plate 8: The front of the building



Plate 9: The front of the building

4.5 The Layout of The Building

The layout of the building is shown in the following plan:



Figure 3: The layout of the Canteen building, 1:200 @ A3

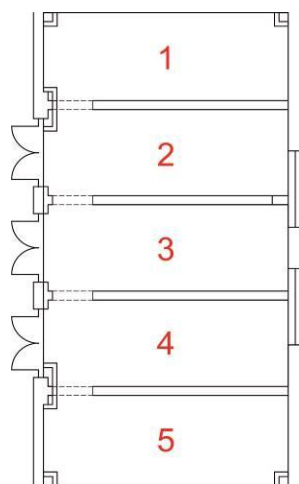


Figure 4: Area beneath stage, 1:200 @ A3

4.6 The Date of the Building

The Building is dated by the listing description as 1925-7.

4.7 The Construction Sequence

The following Phases of construction are present:

| Phase | Period | Date | Description | How Dated |
|-------|--------|-----------|--|---------------------------------------|
| 1 | Modern | 1925-7 | Main structure of building | Listing description, historic mapping |
| 2 | Modern | | Insertion of partition at rear of auditorium | Plan form |
| 3 | Modern | Post 1998 | Office partitions in auditorium, enclosure of stage area, subdivisions at SW end | Plan form, historic photographs |



Figure 5: Phase Plan Scale 1:200

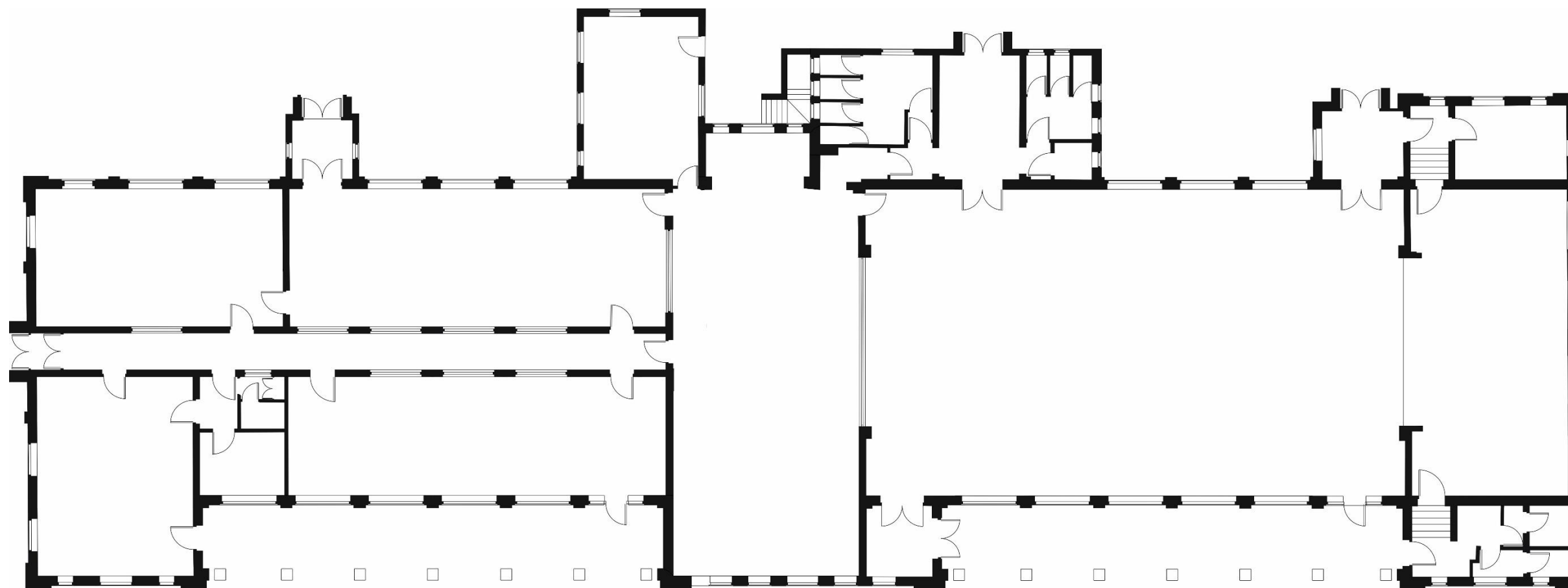


Figure 6: Suggested layout as built, 1:200 @ A3

5. Description: Exterior

The building is constructed in machine-made red brick in a cement mortar matrix, arranged in a variation of Flemish Garden Wall / Sussex Bond.



Plate 10: Front (southeast) elevation



Plate 11: 1930s view of front (southeast) elevation (Blue Bird Album, Romsley & Hunnington History Society)



Plate 12: Historic view of front (southeast) elevation, 1930s (Blue Bird Album, Romsley & Hunnington History Society))

The front of the building faces southeast and consists of three projecting bays, one at either end of the building, each with three windows, and a central bay with five windows.



Plate 13: Detail of central bay

The central bay is further detailed with brick pilasters supporting a fully segmented pediment set into the gable. Central to the gable, a clock is located.



Plate 14: Detail of clock



Plate 15: Northeast elevation, northeast bay

A loggia / veranda is present to each side of the central bay, detailed with brick and stone pillars, and a further six windows.



Plate 16: View to southwest along northeast veranda



Plate 17: View to southwest along southwest veranda



Plate 18: Rear elevation

The rear of the Canteen building has a further projecting bay on the corner closest to the Administration Building, with a hipped roof and three windows. A projecting doorway, with modern roller shutter, abuts this projecting bay, whilst central to the façade is a further low-level addition, providing the main entrance to the building.



Plate 19: The main entrance, with dormers and roof light

A further projecting doorway sits on the other side of the central projection. The northern end of the rear elevation has three large windows, set between raised brick pilasters, whilst five dormer windows and a rooflight pierce the roof. The southern half of this façade is pierced by a further six windows again set between raised brick pilasters.

A decorative cupola, with fretted sides and a copper dome sits central to the roof, which is covered in slate to the sides and rear slopes and a modern red-brown tile to the front.



Plate 20: Detail of cupola



Plate 21: Elevated view of rear elevation



Plate 22: Elevated view of rear elevation



Plate 23: Elevated view of rear elevation



Plate 24: Elevated view of rear elevation



Plate 25: Elevated view of rear elevation



Plate 26: Aerial image of the canteen building

6. Description: Interior

6.1 Room Functions

Current and recent room functions are listed in the table below. Where original functions are known or have been assumed, these are illustrated on the plan overleaf.

| Room | Current Function | Original Function |
|---------------|------------------|--|
| 1 | Entrance Hall | Entrance Hall |
| 2 | Entrance Porch | Entrance Porch |
| 3 | Anteroom | |
| 4 | | |
| 5 | Dining Room | Dining Room |
| 6 | Staff Room | |
| 7 | Corridor | Corridor |
| 8 | Lounge | Directors' Dining |
| 9 | Anteroom | |
| 10 | Toilet | |
| 11 | Anteroom | |
| 12 | | |
| 13 | | |
| 14 | Corridor | |
| 15 | | |
| 16 | Entrance | |
| 17 | Corridor | Kitchen (part) |
| 18 | | Kitchen (part) |
| 19 | Toilets | Toilets |
| 20 | | Kitchen (part) |
| 21 | | Kitchen (part) |
| 22 | | Kitchen (part) |
| 23 | | Main Dining Room and Concert Hall (part) |
| 24 | Entrance Porch | Entrance Porch |
| 25 | Toilets | Toilets |
| 26 | Toilet | |
| 27 | Office | Main Dining Room and Concert Hall |
| 28 | Entrance Porch | Entrance Porch |
| 29 | Staircase | Staircase |
| 30 | | Dressing Room |
| 31 | | Stage (part) |
| 32 | | Stage |
| 33 | | Stage (part) |
| 34 | Kitchen & WC | Dressing Room / WC |
| Beneath Stage | Storage | Storage |

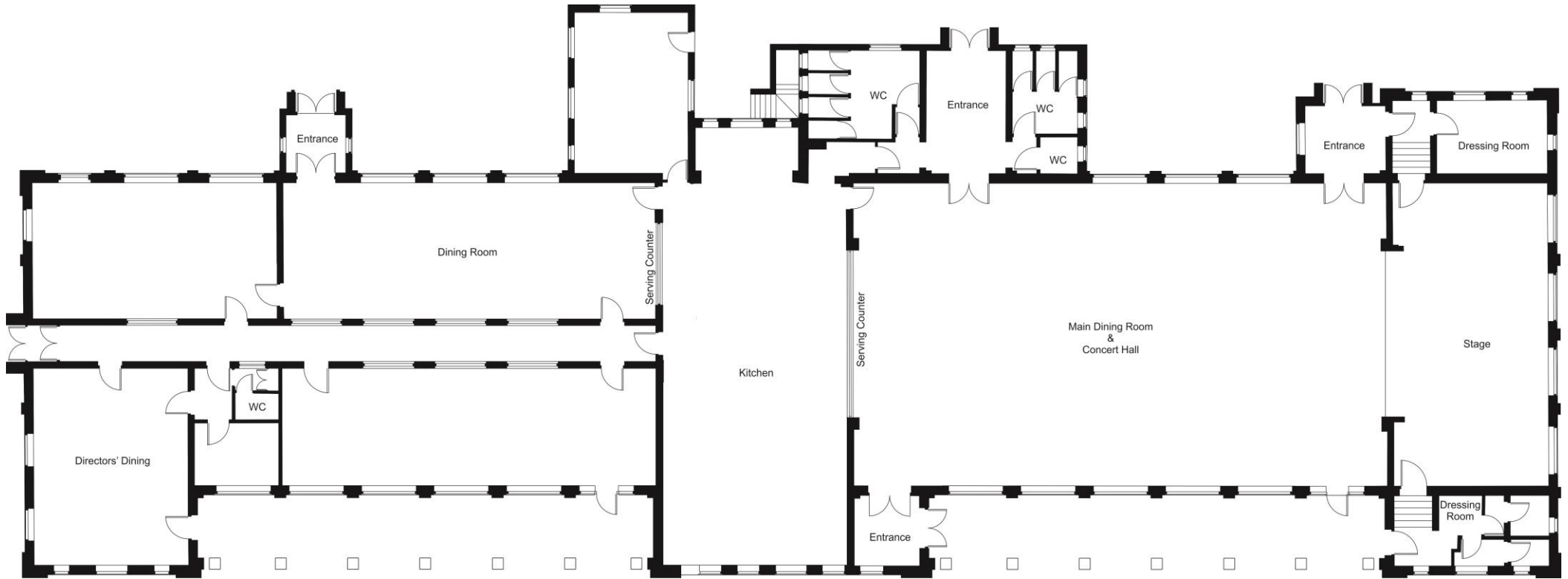


Figure 7: Known / assumed original functions of rooms,

6.2 Room 1 Entrance Hall

| | |
|----------------------|---|
| Current Function | Entrance Hall |
| Original Function | Entrance Hall |
| Phase | |
| Plan Form | Unaltered |
| Door | Double panelled doors - single panel lower, 2x4 pane glazed upper, contemporary with building |
| Windows | None |
| Fireplace | None |
| Historic Features | Skirting, dado rail |
| Comments/Description | The entrance hall to the canteen building has a carpeted floor and an ornamental diamond-shaped light on the northeast and southwest walls. A modern suspended ceiling is present. Historic England suggests this part of the building is a later addition. |



Plate 27: Room 1 Looking Northeast



Plate 28: Room 1 Looking Southeast



Plate 29: Room 1 Looking Southwest



Plate 30: Room 1 Looking Northwest

6.3 Room 2 Entrance Porch

| | |
|----------------------|---|
| Current Function | Entrance Porch |
| Original Function | Entrance Porch |
| Phase | |
| Plan Form | Unaltered |
| Door | Double panelled doors - single panel lower, 2x4 pane glazed upper, contemporary with building. External modern roller shutter. |
| Windows | 2x3 pane casements |
| Fireplace | None |
| Historic Features | Lower part of wall is tiled |
| Comments/Description | The room was not accessible at the time of the visit and is described from what could be seen through the door into room 5. A recent suspended ceiling obscures the original. |



Plate 31: Doors into room 2 from room 5



Plate 32: Northwest aspect, room 2



Plate 33: Northeast aspect, room 2

6.4 Room 3

| | |
|----------------------|---|
| Current Function | Office |
| Original Function | Uncertain |
| Phase | |
| Plan Form | |
| Door | Part glazed, considered not contemporary |
| Windows | 3x3 pane fixed light flanked by 2x3 side hung casements. Similar 2 high fixed lights above all three. Contemporary with building. |
| Fireplace | |
| Historic Features | Skirting |
| Comments/Description | A small square room with no discernible features. A recent suspended ceiling obscures the original. |



Plate 34: Room 3 Looking Southeast



Plate 35: Room 3 Looking Northwest

6.6 Room 4

| | |
|----------------------|--|
| Current Function | Office |
| Original Function | Uncertain |
| Phase | |
| Plan Form | Altered - room 3 inserted |
| Door | Part glazed doors with single pane at head, two solid panels beneath, contemporary with building |
| Windows | Wooden framed multi-light casements and fixed lights contemporary with building |
| Fireplace | None |
| Historic Features | None |
| Comments/Description | Located at the corner of the building, the room features internal windows to the axial corridor. A recent suspended ceiling obscures the original. |



Plate 36: Room 4 Looking Northeast



Plate 37: Room 4 Looking Southeast



Plate 38: Room 4 Looking Southwest



Plate 39: Room 4 Looking Northwest

6.7 Room 5 Dining Room

| | |
|----------------------|--|
| Current Function | Office |
| Original Function | Dining Room |
| Phase | |
| Plan Form | Unaltered |
| Door | Three panelled doors. Contemporary with building. |
| Windows | Wooden framed multi-light casements and fixed lights contemporary with building |
| Fireplace | None |
| Historic Features | Lower part of walls tiled |
| Comments/Description | The dining room is a large open space with external windows to the northwest and internal windows to the southeast. A low partition is located inside the door to the porch, presumably to help prevent draught from the door when opened. A recent suspended ceiling obscures the original. |



Plate 40: Room 5 Looking Northeast



Plate 41: Room 5 Looking Southwest



Plate 42: Room 5 Looking Northwest



Plate 43: Detail of door, northwest elevation



Plate 44: Detail of serving windows



Plate 45: Obscure-glazed serving sash window



Plate 46: Detail of tiles

6.8 Room 6

| | |
|----------------------|--|
| Current Function | Staff Room |
| Original Function | Uncertain |
| Phase | |
| Plan Form | Unaltered |
| Door | Modern fire door to exterior, door to room 147 has three lower panes with 2x3 pane window over |
| Windows | Wooden framed multi-light casements and fixed lights contemporary with building |
| Fireplace | None |
| Historic Features | Skirting |
| Comments/Description | A recent suspended ceiling obscures the original. Historic England suggests this part of the building is a later addition. |



Plate 47: Room 6 Looking Northeast



Plate 48: Room 6 Looking Southeast



Plate 49: Room 6 Looking Southwest



Plate 50: Room 6 Looking Northwest

6.9 Room 7 Corridor

| | |
|----------------------|--|
| Current Function | Corridor |
| Original Function | Corridor |
| Phase | |
| Plan Form | Unaltered - axial corridor running southwest from central part of building |
| Door | Described individually in room descriptions |
| Windows | Fixed wooden framed multi-paned lights over doors at ends of corridor |
| Fireplace | None |
| Historic Features | Lower part of walls tiled |
| Comments/Description | Long axial corridor lit with borrowed light from rooms to northwest, via obscure—glazed multi-pane fixed lights. |



Plate 51: Room 7 Looking Northeast

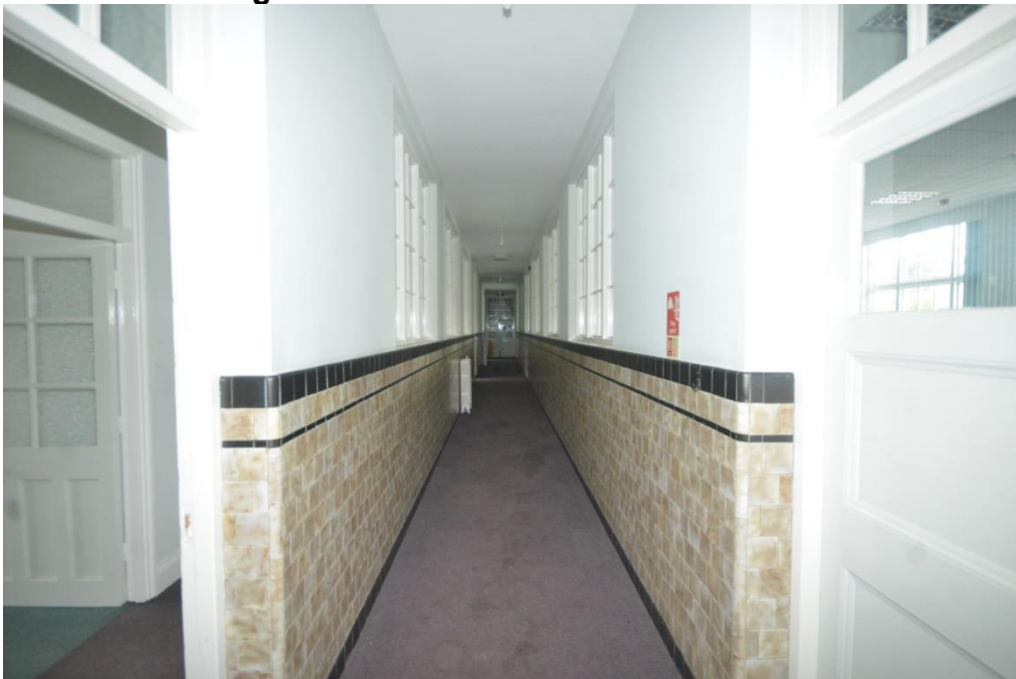


Plate 52: Room 7 Looking Southwest

6.10 Room 8 Lounge

| | |
|-------------------|---|
| Current Function | Lounge |
| Original Function | Directors' Dining Room |
| Phase | |
| Plan Form | Unaltered |
| Door | To corridor and room 9: Three panelled doors, contemporary with building. To exterior: Single panel with glazing over |
| Windows | Pairs of wooden framed 2x3 casements with 2x2 fixed lights over each |
| Fireplace | None |
| Historic Features | Parquet floor, skirting |



Plate 53: Room 8 Looking Northeast



Plate 54: Room 8 Looking Southeast



Plate 55: Room 8 Looking Southwest



Plate 56: Room 8 Looking Northwest

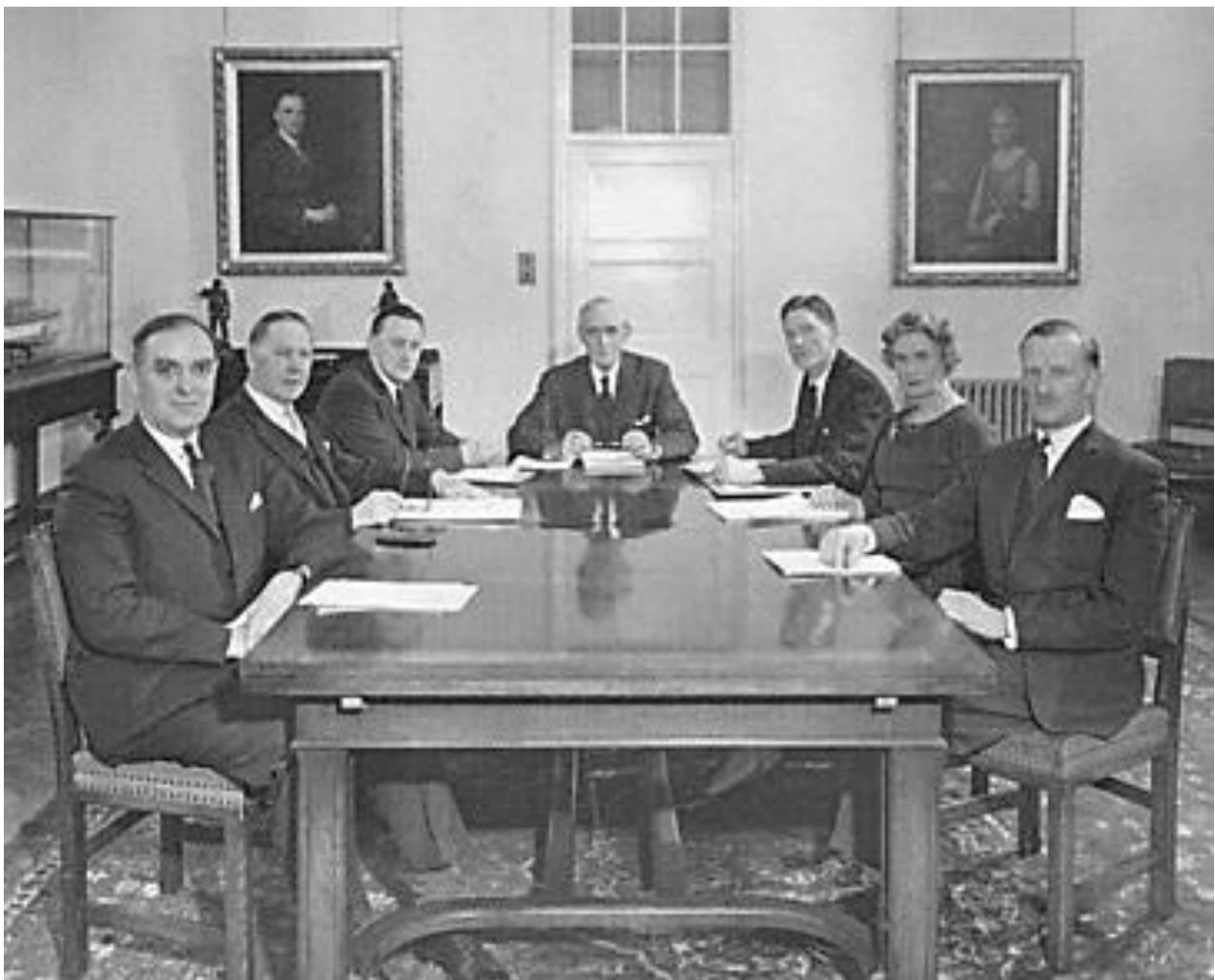


Plate 57: The board of directors in Room 8, c. 1930s (Blue Bird Album, Romsley & Hunnington History Society)



Plate 58: Parquet floor

6.11 Room 9 Anteroom

| | |
|----------------------|---|
| Current Function | Anteroom |
| Original Function | Anteroom |
| Phase | |
| Plan Form | Possibly altered |
| Door | Three panelled doors. Contemporary with building. |
| Windows | None |
| Fireplace | None |
| Historic Features | Skirting |
| Comments/Description | |



Plate 59: Room 9 Looking Southeast

6.12 Room 10 Toilet

| | |
|----------------------|------------------|
| Current Function | Toilet |
| Original Function | Toilet |
| Phase | |
| Plan Form | Possibly altered |
| Door | Modern |
| Windows | None |
| Fireplace | None |
| Historic Features | |
| Comments/Description | |



Plate 60: View into room 10

Room 11 Anteroom

| | |
|----------------------|---|
| Current Function | Anteroom |
| Original Function | Anteroom |
| Phase | |
| Plan Form | Possibly altered |
| Door | Three-panelled door. Contemporary with building. |
| Windows | Wooden framed multi-light casements and fixed lights contemporary with building |
| Fireplace | None |
| Historic Features | Skirting |
| Comments/Description | A small plain room with large window to the southeast |



Plate 61: Room 11 Looking Northeast



Plate 62: Room 11 Looking Southeast



Plate 63: Room 11 Looking Southwest



Plate 64: Room 11 Looking Northwest

6.13 Room 12

| | |
|----------------------|--|
| Current Function | Office |
| Original Function | Uncertain |
| Phase | |
| Plan Form | Altered |
| Door | Three-panelled door. Contemporary with building. |
| Windows | Wooden framed multi-light casements and fixed lights contemporary with building |
| Fireplace | None |
| Historic Features | Skirting |
| Comments/Description | A recent suspended ceiling obscures the original. Rooms 12-16 have been subdivided from a single room. |



Plate 65: Room 12 Looking Northeast



Plate 66: Room 12 Looking Southeast



Plate 67: Room 12 Looking Southwest



Plate 68: Room 12 Looking Northwest

6.14 Room 13

| | |
|----------------------|---|
| Current Function | Office |
| Original Function | |
| Phase | |
| Plan Form | Altered |
| Door | To room 12: Three-panelled door. Contemporary with building. To room 14: three vertical panels with 2x3 glazing over, uncertain date |
| Windows | Wooden framed multi-light casements and fixed lights contemporary with building |
| Fireplace | None |
| Historic Features | Skirting |
| Comments/Description | A recent suspended ceiling obscures the original. Rooms 12-16 are subdivisions of a larger room. |



Plate 69: Room 13 Looking Northeast



Plate 70: Room 13 Looking Southeast



Plate 71: Room 13 Looking Northwest

6.15 Room 14 Corridor

| | |
|----------------------|---|
| Current Function | Corridor |
| Original Function | |
| Phase | |
| Plan Form | Altered |
| Door | Described individually in room descriptions |
| Windows | Multi-light wooden framed fixed lights to room 7 |
| Fireplace | None |
| Historic Features | Skirting |
| Comments/Description | A recent suspended ceiling obscures the original. Rooms 12-16 are subdivisions of a larger room. |



Plate 72: Room 14 Looking Southwest

6.16 Room 15

| | |
|----------------------|---|
| Current Function | Office |
| Original Function | |
| Phase | |
| Plan Form | Altered |
| Door | Three vertical panels with 2x3 obscure glazing over |
| Windows | Wooden framed multi-light casements and fixed lights contemporary with building |
| Fireplace | None |
| Historic Features | Skirting (plain) |
| Comments/Description | A recent suspended ceiling obscures the original. Rooms 12-16 are subdivisions of a larger room. |



Plate 73: Room 15 Looking Northeast



Plate 74: Room 15 Looking Southeast



Plate 75: Room 15 Looking Northwest

6.18 Room 16 Entrance

| | |
|----------------------|--|
| Current Function | Entrance |
| Original Function | |
| Phase | |
| Plan Form | Altered |
| Door | Single panel with 2x3 panes over |
| Windows | Wooden framed multi-light casements and fixed lights contemporary with building |
| Fireplace | None |
| Historic Features | Skirting |
| Comments/Description | This room has a door to the southeast veranda. It is considered likely the division to the northwest forming corridor 14 is an addition. A recent suspended ceiling obscures the original. |

Rooms 12-16 are subdivisions of a larger room.



Plate 76: Room 16 Looking Southeast



Plate 77: Room 16 Looking Northwest



Plate 78: Historic view to northeast, prior to division of room 16, c. 1970s (Blue Bird Album, Romsley & Hunnington History Society)

6.19 Room 17

| | |
|----------------------|---|
| Current Function | Office |
| Original Function | Kitchen |
| Phase | |
| Plan Form | Possibly altered |
| Door | Three vertical panels with 2x3 obscure glazing over |
| Windows | 3x2 obscure-glazed sashes forming servery area to room 5 |
| Fireplace | None |
| Historic Features | Wood panelling below serving windows |
| Comments/Description | The room is an 'L'-shaped corridor. The use of this room as a servery is as yet unexplained, but the presence of servery sash windows suggests it had this purpose. The room is one of the small number of areas of the building with an exposed wooden floor. A recent suspended ceiling obscures the original. |



Plate 79: Room 17 Looking Northeast



Plate 80: Room 17 Looking Southeast



Plate 81: Room 17 Looking Southwest



Plate 82: Room 17 Looking Northwest

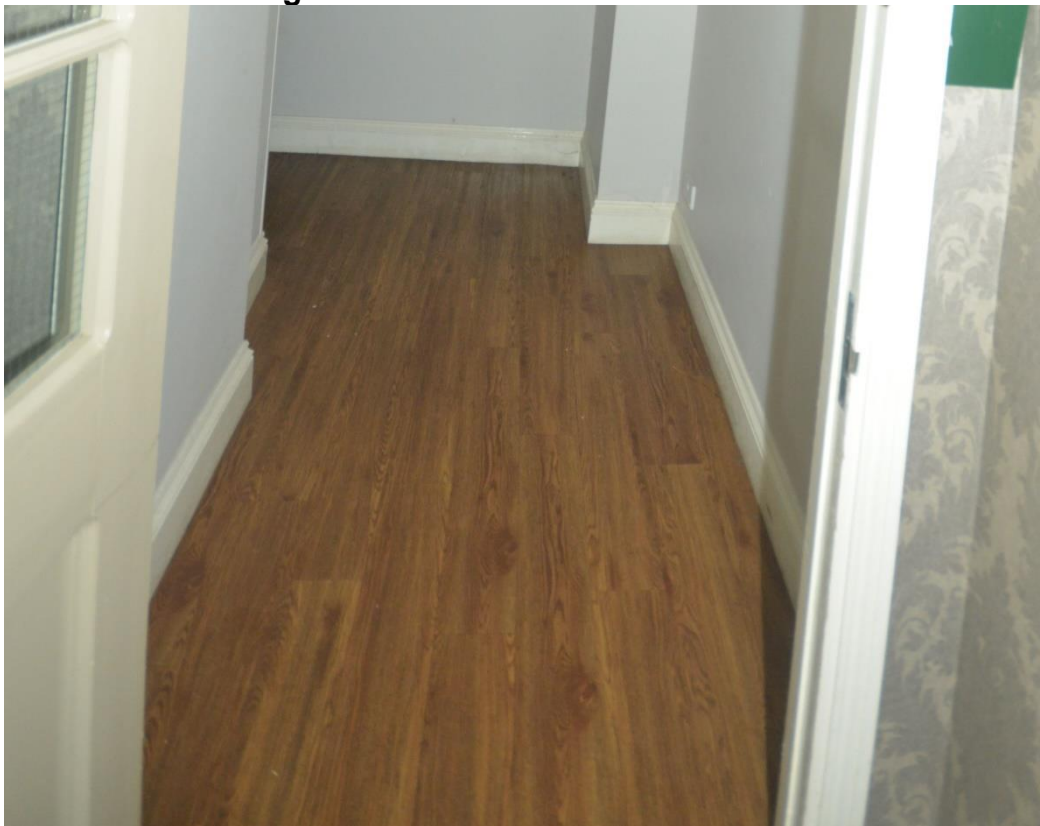


Plate 83: Detail of wooden floor

6.20 Room 18

| | |
|----------------------|---|
| Current Function | Uncertain |
| Original Function | Kitchen |
| Phase | |
| Plan Form | Altered |
| Door | |
| Windows | |
| Fireplace | |
| Historic Features | |
| Comments/Description | The room was inaccessible at the time of the visit. |

The eastern corner of this room is truncated, facilitating ease of passage in the corridor. The door to the room is located in this eastern wall.



Plate 84: Northeast aspect, room 18



Plate 85: Southeast aspect, room 18



Plate 86: Southwest aspect, room 18



Plate 87: Northwest aspect, room 18

6.21 Room 19 Toilets

| | |
|----------------------|--|
| Current Function | Toilets |
| Original Function | Toilets |
| Phase | |
| Plan Form | Unaltered |
| Door | Three-panelled door. Contemporary with building. |
| Windows | Not seen |
| Fireplace | None |
| Historic Features | Original partitions, tiles, radiator |
| Comments/Description | A recent suspended ceiling obscures the original. Historic England suggests this part of the building is a later addition however this cannot be confirmed. |



Plate 88: Room 19 Looking Northeast



Plate 89: Room 19 Looking Southeast



Plate 90: Room 19 Looking Southwest

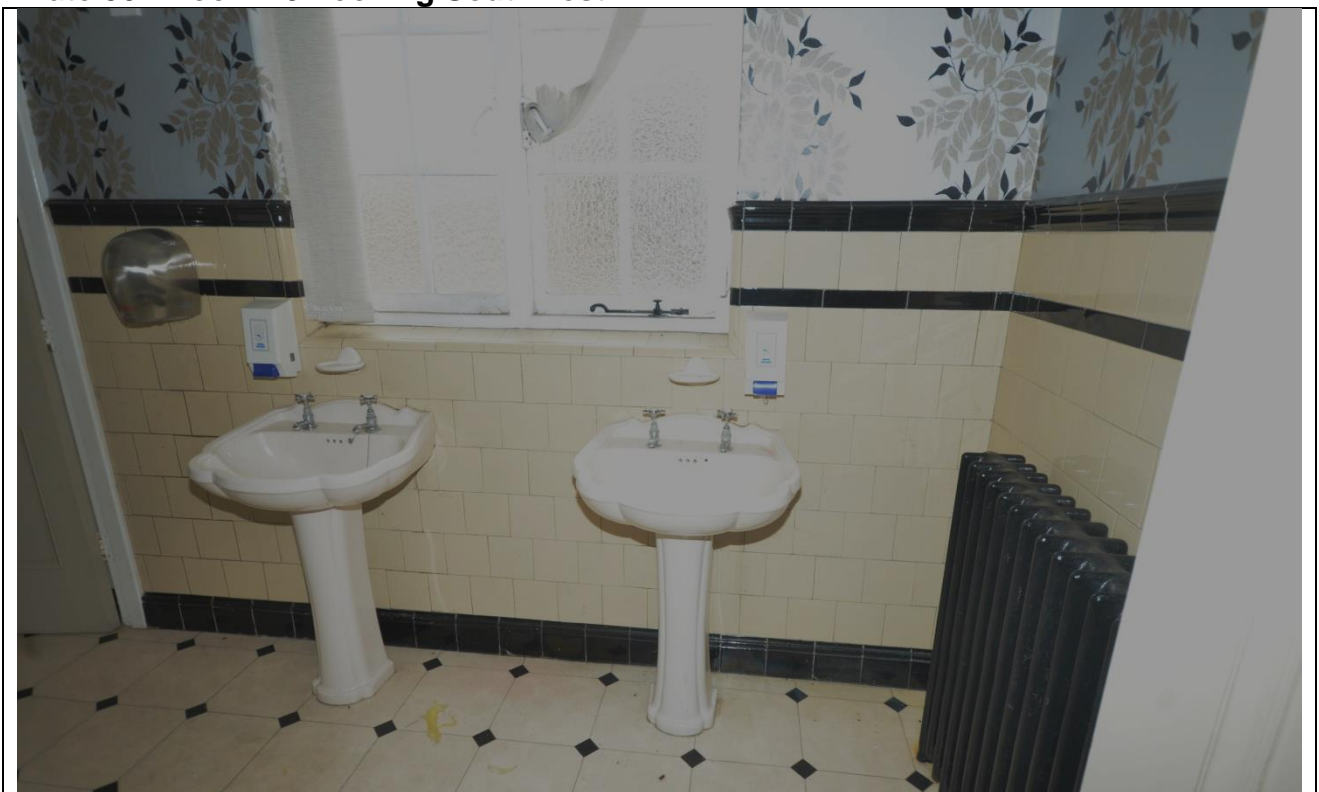


Plate 91: Room 19 Looking Northwest

6.22 Room 20

| | |
|----------------------|---|
| Current Function | Uncertain |
| Original Function | Kitchen |
| Phase | |
| Plan Form | Altered |
| Door | Modern |
| Windows | Blocked internal door and window to southeast |
| Fireplace | None |
| Historic Features | |
| Comments/Description | Room 20 is a small area partitioned from the larger room 22. The room is accessed via room 21. This room is part of the former kitchen. |



Plate 92: Room 20 Looking Southeast, showing blocked door and window



Plate 93: Room 20 Looking Northwest

6.23 Room 21

| | |
|----------------------|--|
| Current Function | Uncertain |
| Original Function | Kitchen |
| Phase | |
| Plan Form | Altered |
| Door | Modern |
| Windows | Blocked window to room 22 |
| Fireplace | None |
| Historic Features | |
| Comments/Description | Room 21 is entered via a small antechamber which features a ladder to the roof space above this part of the building. The room is partitioned from room 22 and gives access to room 20. This room is part of the former kitchen. |



Plate 94: Room 21 Looking Southeast



Plate 95: Room 21 Looking Southwest



Plate 96: Ladder to roof space

6.24 Room 22

| | |
|----------------------|--|
| Current Function | Office |
| Original Function | Uncertain |
| Phase | |
| Plan Form | Altered |
| Door | Three vertical panels with 2x3 obscure glazing over |
| Windows | Wooden framed multi-light casements and fixed lights contemporary with building |
| Fireplace | |
| Historic Features | |
| Comments/Description | A recent suspended ceiling obscures the original. This room is part of the former kitchen. |



Plate 97: Room 22 Looking Northeast



Plate 98: Room 22 Looking Southeast



Plate 99: Room 22 Looking Southwest



Plate 100: Room 22 Looking Northwest

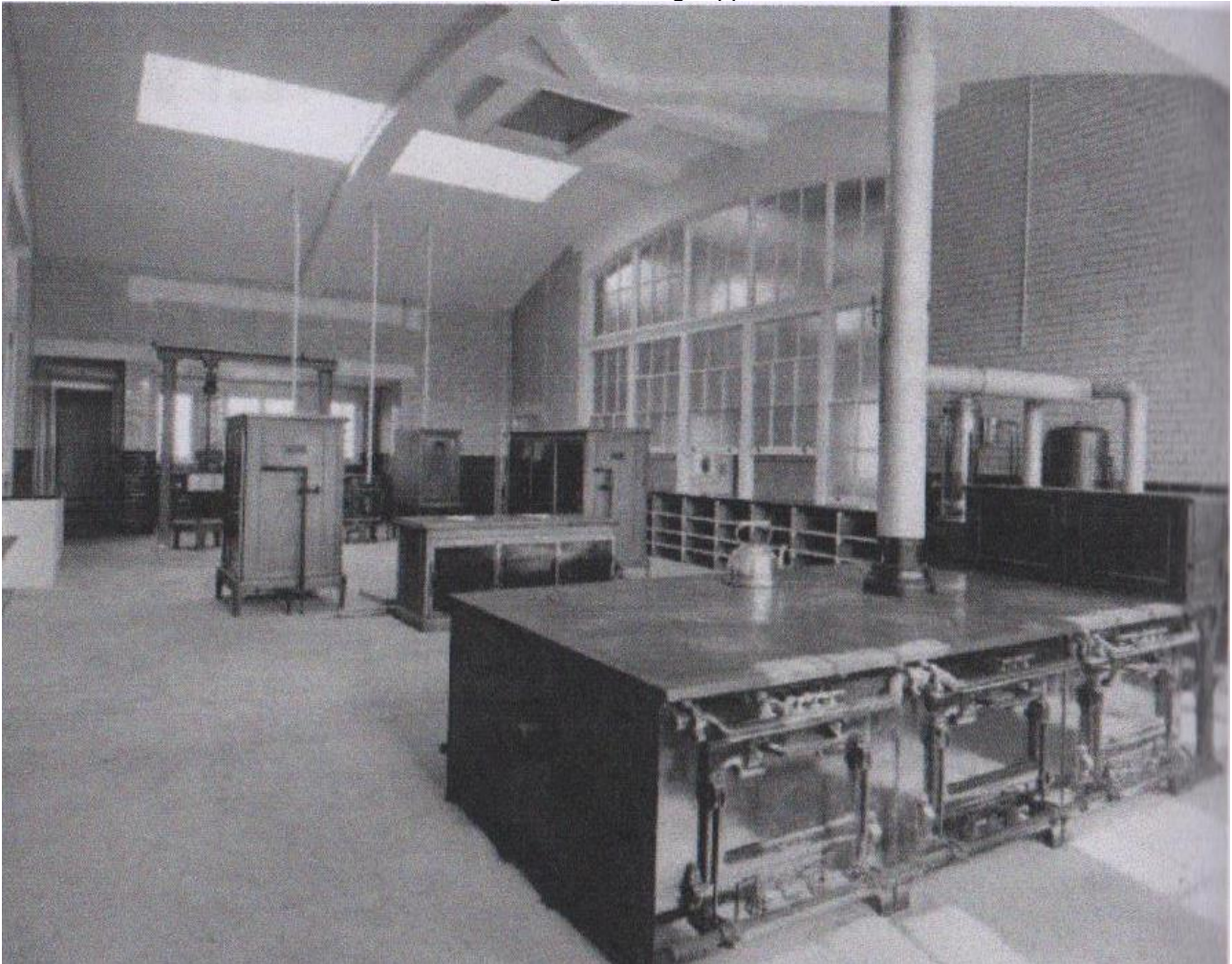


Plate 101: Room 22 Looking Northwest (1930s) (Blue Bird Album, Romsley & Hunnington History Society)

6.26 Part of Concert Hall

| | |
|----------------------|---|
| Current Function | Office |
| Original Function | Part of Concert Hall |
| Phase | |
| Plan Form | Altered |
| Door | 3-panelled to northwest, double doors (single panel with 2x3 lights over) to southeast |
| Windows | Timber framed obscure-glazed fixed lights to auditorium, dormer to northwest matching those of auditorium |
| Fireplace | |
| Historic Features | |
| Comments/Description | This room has been partitioned from the main auditorium. This is considered likely to have happened when the factory was still in operation, owing to the nature of the window in the partition. The blue tiled walls of the auditorium continue into this area, but do not cross the partition wall. |



Plate 102: Room 23 Looking Southeast



Plate 103: Room 23 Looking Northwest

6.27 Room 24 Entrance Porch

Current Function Entrance Porch

Original Function Entrance Porch

Phase

Plan Form

Door Double doors (single panel with 2x4 lights over) to northeast,
double doors (single panel with 2x3 lights over) to northwest

Windows Wooden framed multi-light casement and fixed light,
contemporary with building

Fireplace None

Historic Features

Comments/Description



Plate 104: Northeast aspect, room 24



Plate 105: Southeast aspect, Room 24

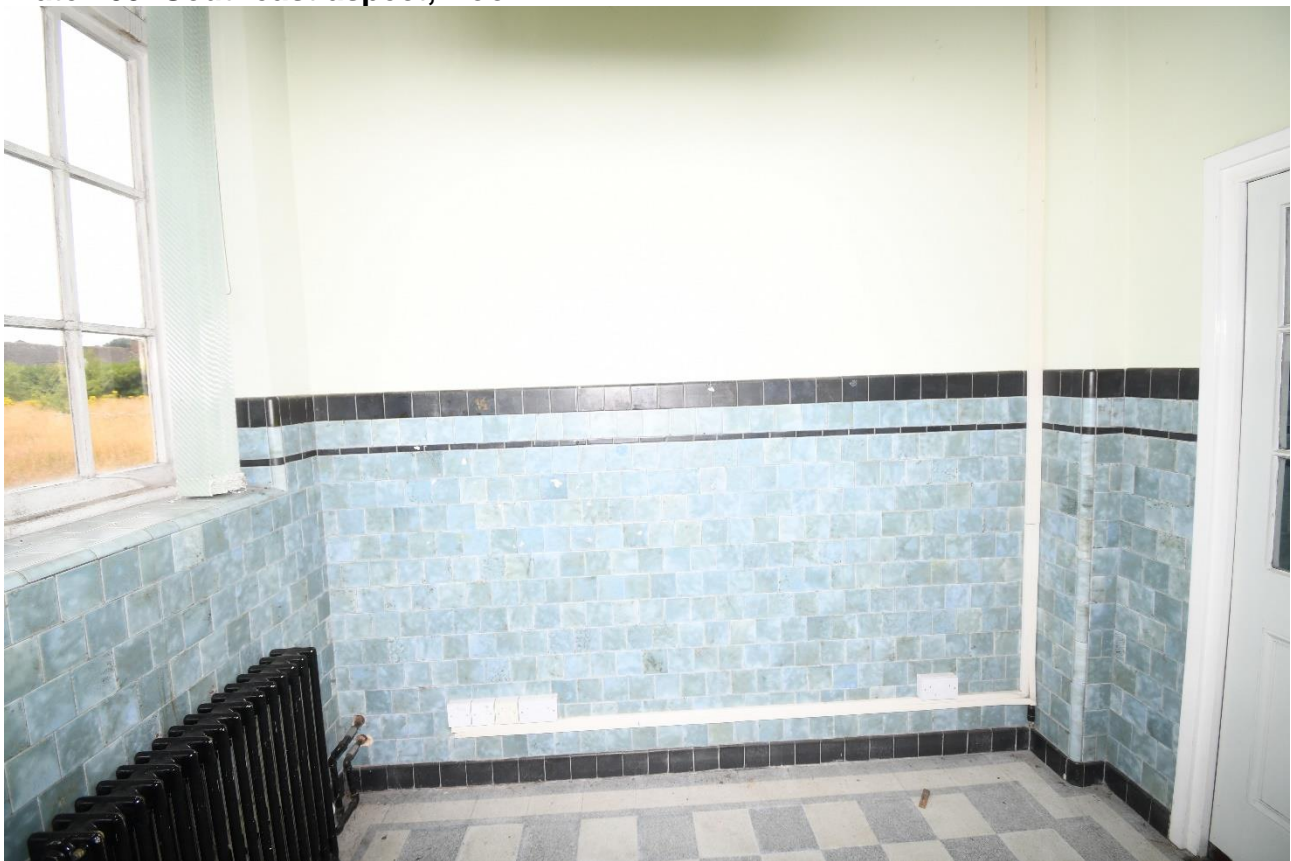


Plate 106: Southwest aspect, Room 24



Plate 107: Northwest aspect, room 24

6.28 Room 25 Toilets

| | |
|----------------------|---|
| Current Function | Toilets |
| Original Function | Toilets |
| Phase | |
| Plan Form | |
| Door | Three panelled doors. Contemporary with building. |
| Windows | 2x3 obscure glazed wooden casements contemporary with building |
| Fireplace | None |
| Historic Features | Original partitions, tiles, radiator |
| Comments/Description | A recent suspended ceiling obscures the original. Historic England suggests this part of the building is a later addition. |



Plate 108: Room 25 Looking Southeast



Plate 109: Room 25 Looking Northwest

6.29 Room 26 Toilet

| | |
|----------------------|---|
| Current Function | Toilet |
| Original Function | Toilet |
| Phase | |
| Plan Form | |
| Door | Three panelled door. Contemporary with building. |
| Windows | 2x3 obscure glazed wooden casement contemporary with building |
| Fireplace | None |
| Historic Features | |
| Comments/Description | This room was not accessible at the time of the visit. Historic England suggests this part of the building is a later addition. |



Plate

110:

Room

26

looking

Northeast

Room 27 Office

Current Function
Original Function
Phase
Plan Form
Door
Windows

Office
Concert Hall / Auditorium, Main Dining Room

Altered - modern partitions installed
External: Single panel with 2x3 panes over
Northwest: High level ?iron framed centre pivot windows fitted to dormers. Southeast: Lower level - wooden framed multi-light casements and fixed lights. All are contemporary with the building.

Fireplace

None

Historic Features

Arched ceiling, lower part of walls tiled

Comments/Description

The room has been subdivided with recent partitions to form open-plan office space, with an entrance lobby in the eastern corner.



Plate 111: Room 27 Looking Northeast



Figure 8: Northeast aspect, with space set up for a performance (c. 1930) (Blue Bird Album, Romsley & Hunnington History Society)



Plate 112: Room 27 Looking Northeast



Plate 113: 1930s image, Room 27 Looking Northeast (Blue Bird Album, Romsley & Hunnington History Society)



Plate 114: Room 27 Looking Southeast (central part)



Plate 115: Room 27 Looking Southeast (western part)



Plate 116: Room 27 Looking Southwest



Plate 117: Historic Image: Room 27 Looking Southwest (c. 1930) (Blue Bird Album, Romsley & Hunnington History Society)



Plate 118: Historic Image: Room 27 Looking Southwest (c. 1930) (Blue Bird Album, Romsley & Hunnington History Society)



Plate 119: Room 27 Looking Northwest



Plate 120: Small partitioned entrance lobby, eastern corner of room 27

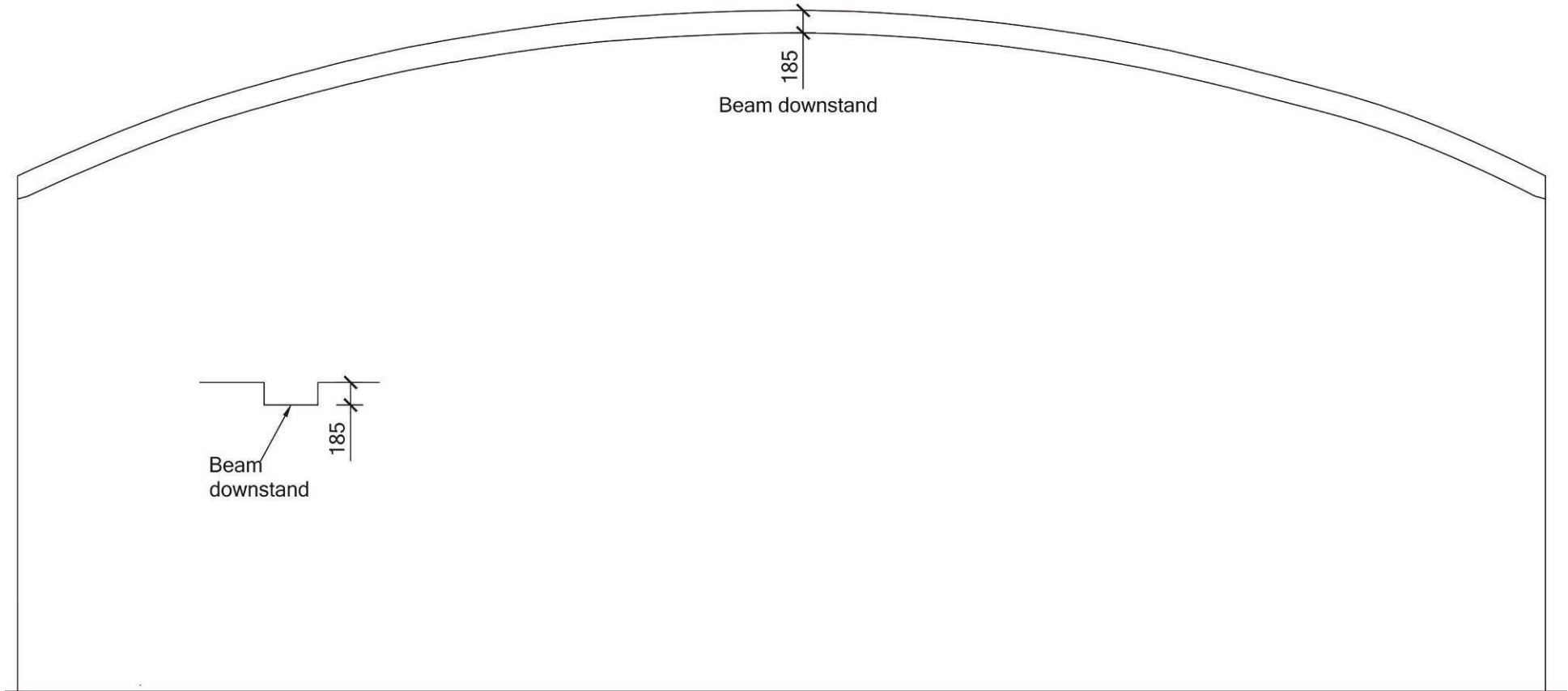


Figure 9: Profile of former concert hall, 1:50 @ A4

6.30 Room 28 Entrance Porch

| | |
|----------------------|--|
| Current Function | Entrance Foyer |
| Original Function | Entrance Foyer |
| Phase | |
| Plan Form | Unaltered |
| Door | Double doors - single panel with 2x4 panes over, recent roller shutter to exterior |
| Windows | |
| Fireplace | None |
| Historic Features | Tiled floor, lower part of walls tiled |
| Comments/Description | A recent suspended ceiling obscures the original. |



Plate 121: Room 28 Looking Northeast



Plate 122: Room 28 Looking Southeast



Plate 123: Room 28 Looking Southwest

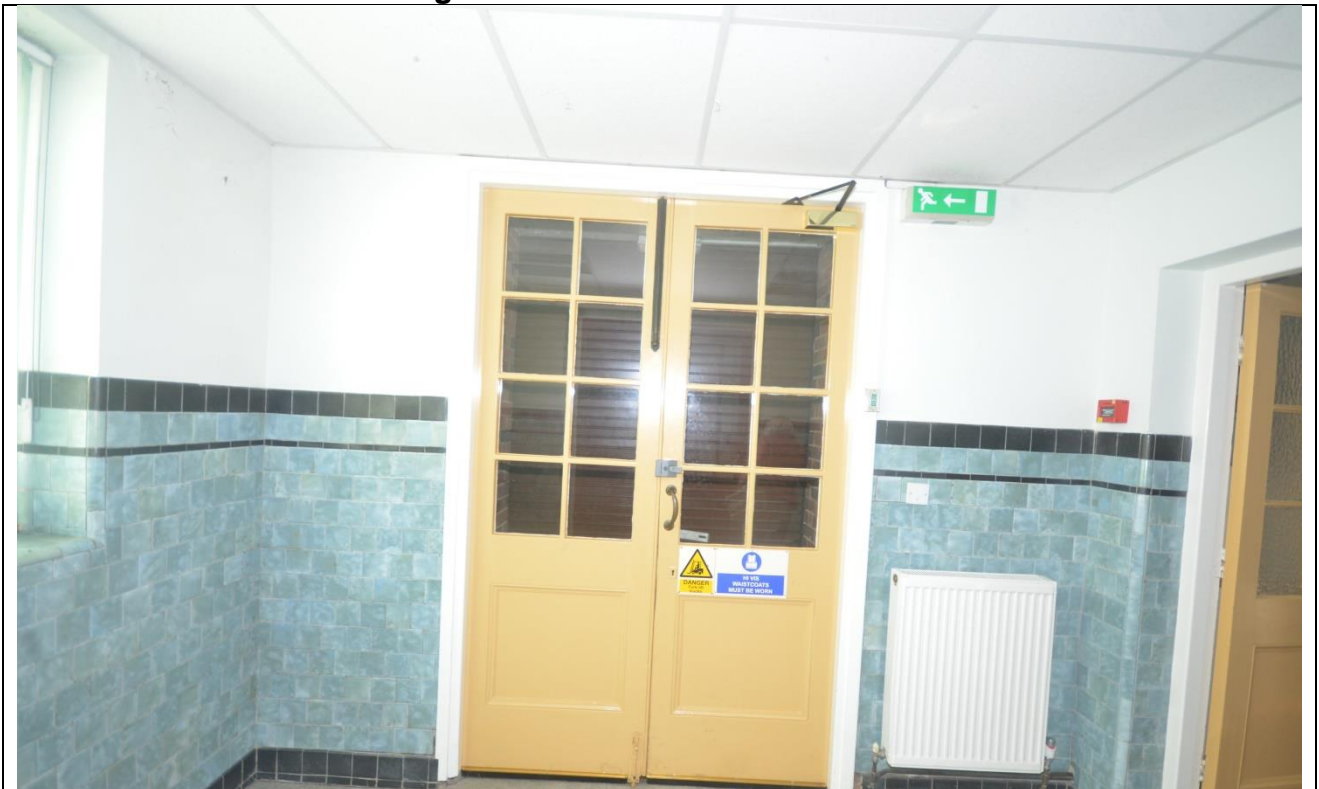


Plate 124: Room 28 Looking Northwest

6.31 Room 29 Staircase

| | |
|----------------------|---|
| Current Function | Staircase |
| Original Function | Staircase |
| Phase | |
| Plan Form | Unaltered |
| Door | Single panel with 3x3 panes over |
| Windows | |
| Fireplace | None |
| Historic Features | |
| Comments/Description | A recent suspended ceiling obscures the original. |



Plate 125: Room 29 Looking Southeast



Plate 126: Room 29 Looking Southwest

6.32 Room 30 Dressing Room

| | |
|----------------------|---|
| Current Function | Office |
| Original Function | Dressing Room |
| Phase | |
| Plan Form | Unaltered |
| Door | Three panelled doors. Contemporary with building. |
| Windows | Wooden framed multi-light casements and fixed lights contemporary with building |
| Fireplace | None |
| Historic Features | Skirting (plain) |
| Comments/Description | A recent suspended ceiling obscures the original. |



Plate 127: Room 30 Looking Northeast



Plate 128: Room 30 Looking Southeast



Plate 129: Room 30 Looking Southwest

6.33 Room 31

| | |
|----------------------|---|
| Current Function | Office |
| Original Function | Uncertain |
| Phase | |
| Plan Form | |
| Door | Three panelled doors. Contemporary with building. |
| Windows | |
| Fireplace | None |
| Historic Features | Skirting (plain) |
| Comments/Description | A recent suspended ceiling obscures the original. |



Plate 130: Room 31 Looking Northeast

6.34 Room 32 Stage

| | |
|----------------------|---|
| Current Function | Office |
| Original Function | Stage |
| Phase | |
| Plan Form | Altered - wall built across front of stage |
| Door | |
| Windows | Wooden framed multi-light casements and fixed lights contemporary with building |
| Fireplace | None |
| Historic Features | |
| Comments/Description | The room has most recently been used as an open-plan office, evidenced by the rows of power sockets across the floor, indicating the location of desks. A recent suspended ceiling obscures the original. |



Plate 131: Room 32 Looking Northeast



Plate 132: Room 32 Looking Southeast



Plate 133: Room 32 Looking Northwest

6.35 Room 33 Dressing Room

| | |
|----------------------|---|
| Current Function | Office |
| Original Function | Uncertain |
| Phase | |
| Plan Form | |
| Door | Three vertical panels with 2x3 obscure glazing over |
| Windows | Wooden framed multi-light casements and fixed lights contemporary with building |
| Fireplace | None |
| Historic Features | Skirting (plain) |
| Comments/Description | A recent suspended ceiling obscures the original. |



Plate 134: Room 33 Looking Northeast



Plate 135: Room 33 Looking Southwest

6.36 Room 34 Toilets and kitchen

| | |
|----------------------|---|
| Current Function | Toilets and kitchen |
| Original Function | Dressing Room |
| Phase | |
| Plan Form | ?Unaltered |
| Door | Three panelled doors. Contemporary with building. |
| Windows | Wooden framed multi-light casements and fixed lights contemporary with building |
| Fireplace | None |
| Historic Features | Lower part of walls tiled with brick-sized tiles |
| Comments/Description | A recent suspended ceiling obscures the original. |



Plate 136: Room 34 Looking Northeast



Plate 137: Detail of lavatory



Plate 138: Room 34 Looking Southeast



Plate 139: Room 34 Looking Northwest

7. Below Stage Area

| | |
|----------------------|--|
| Current Function | Storage |
| Original Function | Storage beneath stage |
| Phase | |
| Plan Form | |
| Door | None |
| Windows | Bottom hung casement |
| Fireplace | None |
| Historic Features | |
| Comments/Description | The space beneath the stage is divided into five bays and is accessed via three sets of double doors from room 27. Internally, steps give access to the lower level. |



Plate 140: Entrance from room 27



Plate 141: Bay 1 looking northeast



Plate 142: Bay 2 looking northeast



Plate 143: Bay 3 looking northeast



Plate 144: Bay 4 looking northeast



Plate 145: Bay 5 looking northeast



Plate 146: West corner, bay 5

8. Roof Space

Access to the roof space above room 23 is via the ladder fixed to the wall of room 21. The original roof structure can be seen, with rendered beams forming the structure of the arched roof. A square-mesh grille is present leading into the void at the apex of the roof above the bow of the arched roof. This is considered likely to have been constructed as an air vent.

The northwest, northeast and southeast walls are seen to be constructed of white glazed brick. The southwest wall is of plain brick. All brickwork is in stretcher bond.

Wires are visible supporting the suspended ceiling to the room below. The roof space has been used recently to run an extensive network of cables, supported by the suspended ceiling itself.

Owing to the low weight-bearing properties of a suspended ceiling, no access was possible beyond the hatch.

The roof has a number of recessed windows, each comprising four fixed lights.



Plate 147: Northwest aspect, roof space, showing rendered beams



Plate 148: Southeast aspect, roof space showing brick wall



Plate 149: Cable distribution



Plate 150: Roof space showing window openings



Plate 151: Detail of window

9. Roof and Ceiling Structure Over Auditorium

The external appearance of the roof over the former auditorium matches that of the opposite end of the building, being a pitched slate-clad roof with dormer windows. Beneath this covering, it is clear that the roof structure clearly differs from its external appearance.

The roof over the former auditorium is formed from arched concrete beams. These beams are rendered / plastered, then painted, concealing any details of their construction.

The roof structure is described in the Listing Description as *“the concrete-ribbed roof structure above the former concert hall proved an effective and unusual technological achievement for this period”*

It is noted that the structure over the auditorium comprises beams running perpendicular to the auditorium itself, whereas those recorded in the roof space above are angled. It is clear that the roof structure at its southwest end features angled bracing against the end wall and around openings, to maintain structural integrity. A similar arrangement is anticipated above the suspended ceilings in the rooms at the northeast end of the building, above the former stage and adjacent rooms.

There is no visible external evidence of the arched structure.

It is unclear as to whether the beams were made off-site and imported, or were cast in Hunnington to minimise transportation difficulties, before being erected in their current position..





Plate 152: Detail of straight concrete arched beams over main auditorium



Plate 153: Detail of bracing formed by arched concrete beams, southwest of main auditorium

10. Door Catalogue

| | |
|---|--------------------------------------|
| Door Type | Three panelled |
| Door Date | 1920s |
| Rooms | 8, 9, 11, 12, 13, 19, 25, 30, 31, 34 |
|  | |

| | |
|--|-------------------------------|
| Door Type | Three panel, top panel glazed |
| Door Date | 1920s |
| Rooms | 4 |
|  | |

Blue Bird Park Building Recording: Appendix 2 Canteen

| | |
|--|--------------------------------|
| Door Type | Single panel with glazing over |
| Door Date | 1920s |
| Rooms | 8 |
|  | |

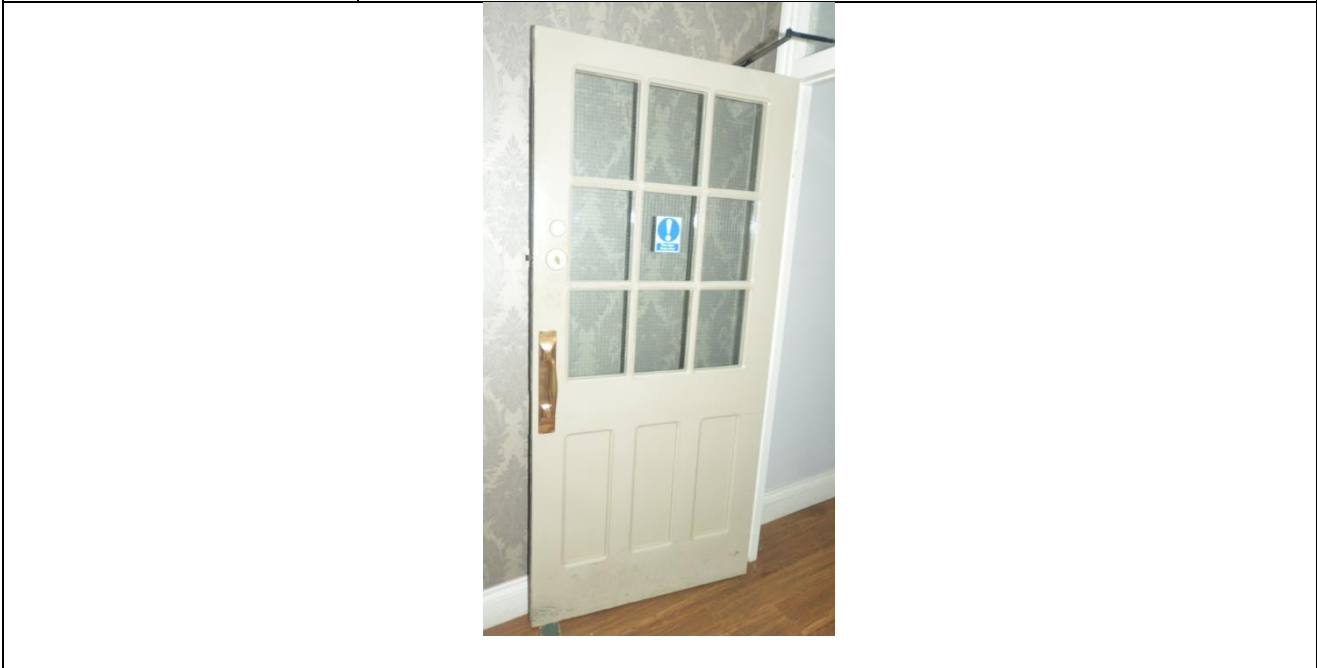
| | |
|--|---|
| Door Type | Double doors - single panel with 2x4 panes over |
| Door Date | 1920s |
| Rooms | 1, 28 |
|  | |

Blue Bird Park Building Recording: Appendix 2 Canteen

| | |
|------------------|---|
| Door Type | Double doors - single panel with 2x3 panes over |
| Door Date | 1920s |
| Rooms | 23, 24 |



| | |
|------------------|---|
| Door Type | Three vertical panels with 2x4 glazing over |
| Door Date | Uncertain |
| Rooms | 6, 13, 15, 17, 22, 33 |



| | |
|------------------|----------------------------------|
| Door Type | Single panel with 2x3 panes over |
| Door Date | Uncertain |
| Rooms | 16, 18, 27, 29 |



| | |
|------------------|-----------|
| Door Type | Fire Door |
| Door Date | Modern |
| Rooms | 6 |



11. Original Features

| | |
|-----------------|--|
| Feature | Ornamental diamond-shaped lights on the northeast and southwest walls. |
| Location | Room 1 |



| | |
|-----------------|----------------|
| Feature | Wood panelling |
| Location | Room 17 |



12. Wall Coverings

The following illustration shows the current wall coverings present in the building.

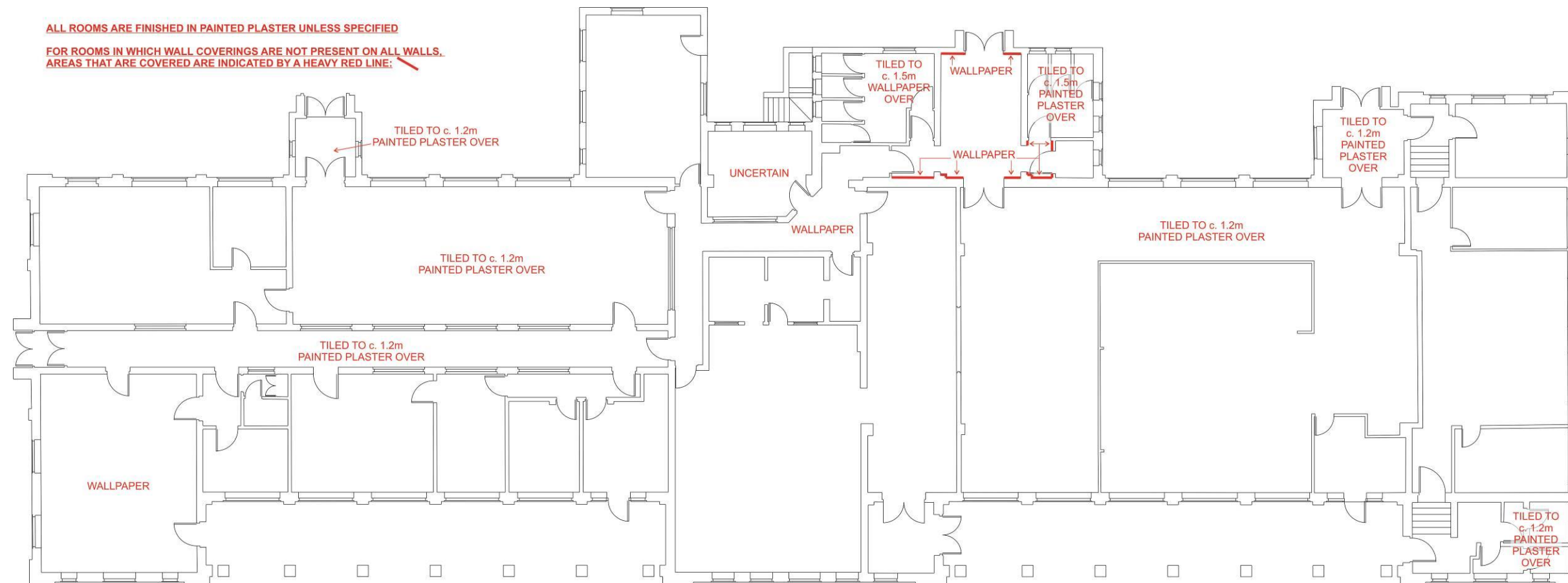
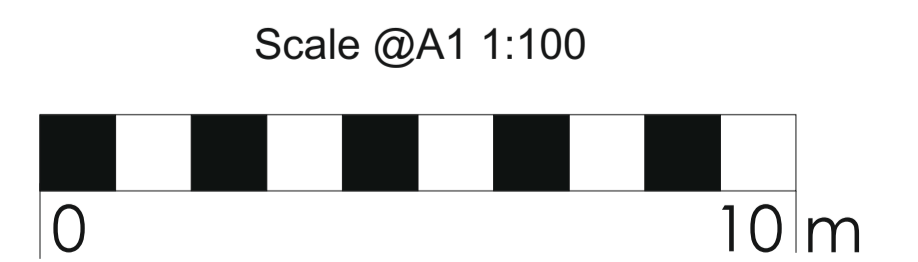
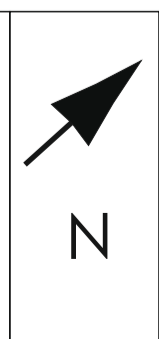
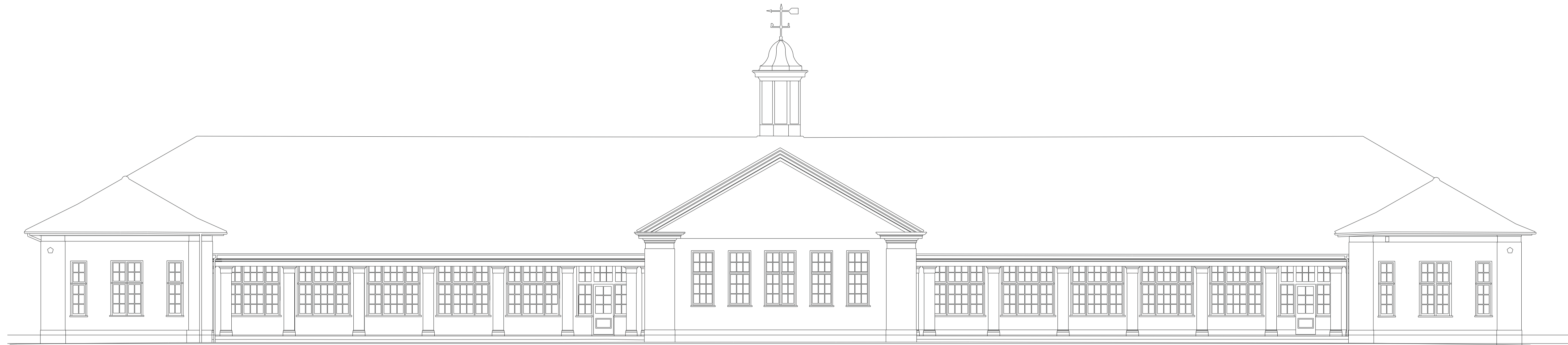


Figure 10: Wall coverings, 1:200 @ A3

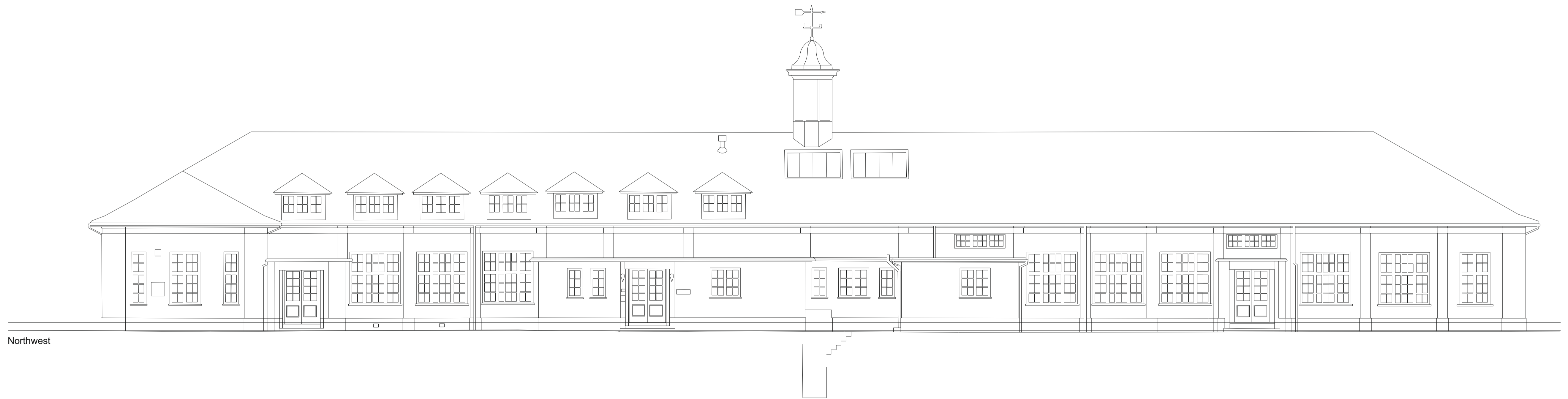


Blue Bird Park
Administration Building Floor Plan

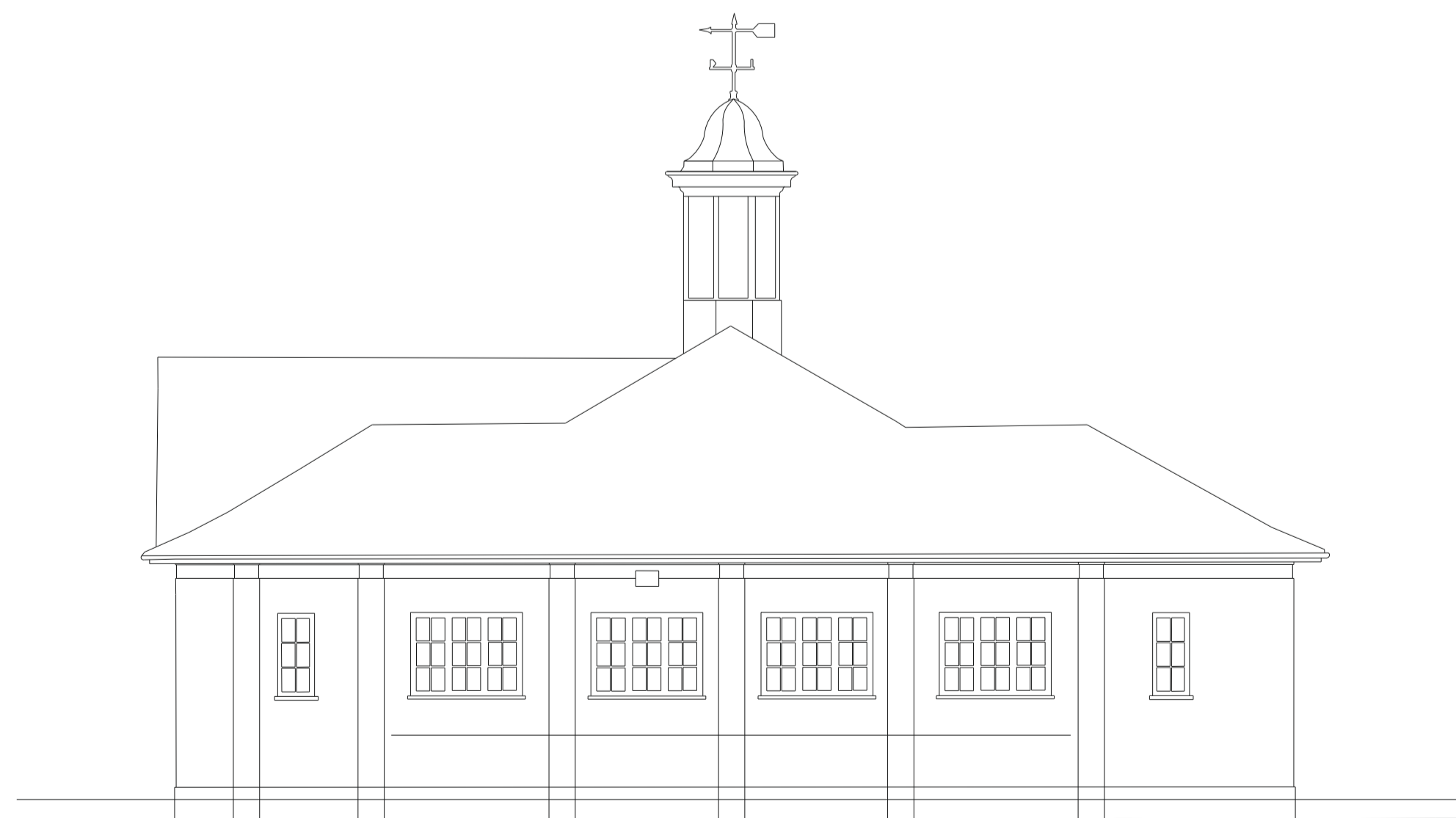




Southeast



Northwest



Northeast



Southwest

Blue Bird Park
Canteen Elevations

Scale @A1 1:100

